

MANCHESTER WATER DEPARTMENT CROSS CONNECTION PROGRAM

Overview of the Program

In order to protect the drinking water in the water distribution system from any contamination, the Manchester Water and Sewer Department is required by State of CT Dept of Public Health to maintain a Cross Connection program. The Manchester Water and Sewer Department determines if cross connections exist and if they do, that they are properly controlled or have the proper protective device installed and maintained. The Cross-Connection program consists of two sections, survey inspections, and testing of backflow prevention devices.

Cross Connection (Survey) Inspection

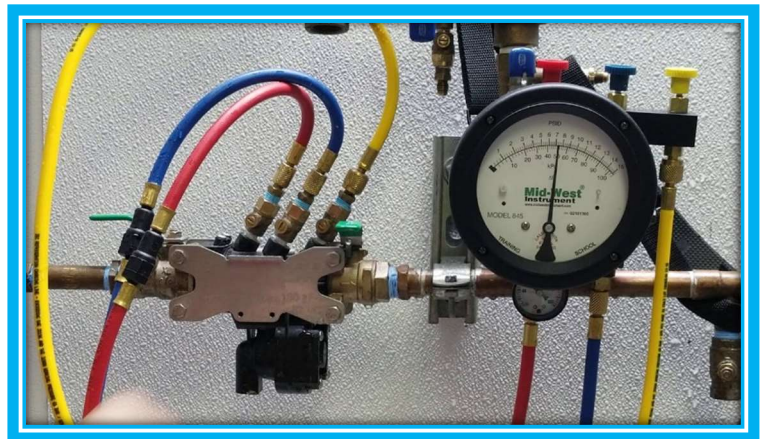


The Cross-Connection inspection is the first step in the program. The Manchester Water and Sewer Department is notified and made aware of any commercial, industrial, institutional, and residential facilities that are being built. Our Cross-Connection inspector goes to the location and conducts an inspection to determine if any backflow preventers are needed at the location, or if the location needs to be inspected annually or every 5 years. The inspection is a walkthrough of the water system in the building or property, starting from the water meter looking at any fixtures, tools, or machines that use domestic water and ending at the last free flowing tap. This inspection is at no charge to the owner or tenant. After the inspection is

conducted, the inspector will have a report form they fill out describing any violations or corrections needed to the owner or tenant. Some inspections may take just a few minutes as others may take several days, depending on the complexity of the location being inspected. The State of CT Public Health Code regulations stated in section 19-13-B37 and 19-13-B39 requires the Manchester Water and Sewer Department to perform an inspection at these facilities.

Backflow Prevention Device Testing

Device testing is the second part of the cross-connection program. Any testable backflow preventers are required by the State of CT Public Health Code Regulations 19-13-B38A to be tested annually. Depending on the device being tested, check valves and relief valves open or close to prevent any back pressure or back siphonage of water back into the drinking water system. The inspector tests these devices using a differential pressure gauge that has hose hook ups that connect to test ports of each device being tested. There is a sequence of steps the inspector conducts on the device and certain pressures on the gauge must be met to ensure the device is working properly. Overtime some devices may have the internal parts wear out or being fouled with debris leading to failure of the device. The backflow test will then determine if a device is in a failed state. The inspector will allow a 30 day period to have the device repaired or replaced at the expense of the owner by a licensed professional. Most devices on the market have repair kits available.



For more information regarding inspection or device testing, please contact the Manchester Water and Sewer Department.