

HOW DO YOU SPEND YOUR [OUT OF SCHOOL] TIME?



MANCHESTER'S [OUT OF SCHOOL] TIME DIRECTORY

A Directory of Manchester's Out-of-School-Time Providers

Manchester's Out-of-School-Time Directory was funded by the Nellie Mae Education Foundation and produced by the Town of Manchester's Office of Neighborhoods and Families and Manchester Public Schools. Initial community mapping was performed by students of Project Management CST B205 at Manchester Community College. Special thanks to Candace Figueroa, Ted Brown, Brian Currie, Professor Susan Barzottini, and Manchester Community College's Information Management and Technology Department.

For a digital version of this guide, visit
www.mpspride.org
or www.townofmanchester.org

Additional copies are available at both:

Town of Manchester
Customer Service & Information Center
Town Hall, First Floor
41 Center Street
Manchester, Connecticut 06040
(860) 647-5235

Manchester Public Schools
45 North School Street
Manchester, Connecticut 06042
(860) 647-5041

HOW TO USE THIS GUIDE

Manchester's Out-of-School-Time Directory is an annotated guide of out-of-school-time providers, that is providers of opportunities, events, programs, and activities for school-aged children during the hours that school is not in session. Looking for a particular type of program or activity? Visit the Table of Contents (pages 3 and 4) for a listing of providers by category with corresponding page numbers. Looking for a particular provider? Just thumb through the directory for an alphabetic, annotated listing of providers.

For more information on "Out-of-School Time" and the whys and wherefores of this directory, see the Introduction on page 2. See the Appendix, page 26, for additional resources.

**HOW DO YOU SPEND YOUR
[OUT OF SCHOOL] TIME?**



INTRO INTRODUCTION

What Is Out-of-School Time?

School-aged children spend most of their waking hours outside of school. Constructive use of this “Out-of-School Time”—the hours, days, weeks, and months that school is not in session—helps young citizens build the social, emotional, critical thinking, and problem-solving skills that lead to long-term success, both in school and beyond.

Why Manchester Needs an Out-of-School-Time Directory?

From full-fledged afterschool programs to arts-based enrichment opportunities to sports teams to faith-based youth groups, Manchester is rich in organizations that offer opportunities for young citizens to build skills, develop healthy habits, and strengthen community ties. But...according to a 2013 survey of Manchester children in grades 6 -12, only half of them regularly participate in structured recreational programs; less than half participate in faith-based activities; and only one-fifth spend regular time in arts-based lessons or practice.

While we know that there can be a variety of barriers to accessing OST programs, the very first barrier to address is this: *You can't access programs if you don't know they exist.* The Town of Manchester's Office of Neighborhoods and Families and Manchester Public Schools undertook the creation of this directory with a two-fold goal: 1) Creating a broad-based “community asset mapping” of existing resources as a first step in coordinating and aligning OST programming and strengthening community partnerships; and 2) Centralizing information about Manchester OST Providers in a single, widely-distributed publication.

If You Wish Your Organization or Business Were Included in This Directory

Unfortunately, community asset mapping is an imperfect process, and it's inevitable that some amazing organizations will get left out. Fortunately, the print-version Manchester's Out-of-School Time Directory is just a Phase One directory. Read on to see how you can make sure your organization is included in Phase Two.

PHASE TWO: A Virtual OST Directory—Next Steps for the Future

It is our hope this printed guide will help parents, caregivers, and young people find programs and providers they might not otherwise know about. Eventually, though, we know that this information will go out of date. Phone numbers will change; program offerings will expand; new organizations will pop up. This directory will, we know, become obsolete. That's why it's our belief that the very best place to centralize information about Manchester OST Providers is in a virtual space—as an online, web-based directory. With a web-based directory—accessible by computer, mobile device, or phone—information can be updated instantaneously; there is space for a description not only each provider but each program and each activity; program information can be sorted and searched for by day of the week, time of day, age range, keyword, and more.

All providers participating in Manchester's Out-of-School-Time Directory will receive an invitation to register for the web-based version when it's completed. If you'd like your organization to be included in the web-based directory, simply fill out the OST registration form at the website of Manchester's Office of Neighborhoods and Families (<http://naf.townofmanchester.org>). Or call (860) 647-3089 for more information.

KEYWORDS:

Out-of-School Time

Noun. The hours of the day, days of the week, weeks of the month, and months of the year that school is not in session.

out-of-school-time

Adjective. A phrase used to describe programs and activities that take place during Out-of-School Time. Commonly abbreviated “OST.”

community asset mapping

Verb / Noun. The act and/or the final result of identifying existing community resources (for example, social service agencies, early childhood programs, or OST providers)

CONTENTS



ACADEMICS



Academy of Martial Arts & Personal Development	5
Bowers Elementary School	6
Boy Scouts of America	7
Buckley Elementary School	8
Connecticut Odyssey of the Mind	9
CT Knights, Inc.	9
Elizabeth M. Bennet Academy	10
Excursions in Learning Youth Programs	10
Faith Tabernacle	10
Highland Park Elementary School	11
Howell Cheney Technical High School	12
Illing Middle School	12
Jump Start Kindergarten	13
Keeney Street Elementary School	13
Little Debbie's Preschool	14
Manchester Church of the Nazarene	16
Manchester Continuing Education	16
Manchester Early Learning Center (MELC)	16
Manchester High School	16
Manchester Neighborhood Academy	17
Manchester Parks and Recreation Department	17
Manchester Police Activities League, Inc.	17
Manchester Public Library	19
Martin Elementary School	20
MusicMakers International Academy	21
Odyssey Community School	22
Robertson Elementary School	22
St. James School	23
Verplanck Elementary School	24
Waddell Elementary School	24
Washington Elementary School	25
Wee Care Day Care	25



STEM



Boy Scouts of America	7
Connecticut Odyssey of the Mind	9
Excursions in Learning Youth Programs	10
Girl Scouts of Connecticut	11
Howell Cheney Technical High School	12
Illing Middle School	12
Lutz Children's Museum	14
Manchester High School	16
Manchester Public Library	19
TimeMachine Hobby	24
UConn 4-H Clubs	24



SPORTS & RECREATION



Academy of Martial Arts & Personal Development	5
Atwater Martial Arts	5
Bowers Elementary School	6
Boy Scouts of America	7
Buckley Elementary School	8
CT Knights, Inc.	9
Dragon Karate	9
Eastern Connecticut Hockey Organization	9
Elizabeth M. Bennet Academy	10
Girl Scouts of Connecticut	11
Howell Cheney Technical High School	12
i9 Sports	12
Illing Middle School	12
Julie Lang Studio of Dance	13
Lutz Children's Museum	14
Malee's School of Tai Chi & Kung Fu	14
Manchester American Legion Baseball	15
Manchester Babe Ruth Baseball	15
Manchester Basketball Association	15
Manchester Brazilian Jiu-Jitsu (Manchester BJJ)	15
Manchester Continuing Education	16
Manchester Country Club	16
Manchester Early Learning Center (MELC)	16



SPORTS & RECREATION CONTINUED

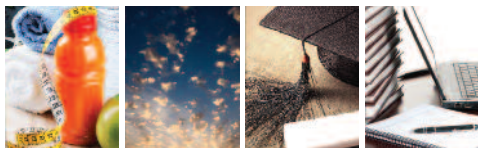
Manchester High School	16
Manchester Little League	17
Manchester Parks and Recreation Department	17
Manchester Police Activities League, Inc.	17
Manchester Public Library	19
Manchester R.O.C.S.	19
Manchester Running Club	19
Manchester Sentinals	19
Manchester Ski Club	19
Manchester Soccer Club	19
Manchester Swim Club	20
Movement	21
Park's U.S. Taekwondo	22
Robertson Elementary School	22
Soarin' Indoors	22
St. James School	23
Stone Age Rock Gym	23
Verplanck Elementary School	24
Waddell Elementary School	24
Washington Elementary School	25
White Tiger School of Taekwon-Do	26



POSITIVE YOUTH DEVELOPMENT



Academy of Martial Arts & Personal Development	5
Atwater Martial Arts	5
Beth Shalom B'nai Israel	6
Bowers Elementary School	6
Boy Scouts of America	7
Capital Workforce Partners	8
Connecticut Firemen's Historical Society	9
CT Knights, Inc.	9
Elizabeth M. Bennet Academy	10
Excursions in Learning Youth Programs	10
Family Resource Centers at Manchester Schools	10
Family Resource Center at Washington (ECHN)	10
Firm Foundation Leadership Coalition, Inc.	11
Full Gospel Interdenominational Church	11
Girl Scouts of Connecticut	11
Howell Cheney Technical High School	12
Lutz Children's Museum	14
Malee's School of Tai Chi & Kung Fu	14
Manchester Brazilian Jiu-Jitsu (Manchester BJJ)	15
Manchester Church of Christ Youth Group	15
Manchester Early Learning Center	16
Manchester High School	16
Manchester Neighborhood Academy	17
Manchester Parks and Recreation Department	17
Manchester Police Activities League, Inc.	17
Manchester Police Explorers	17
Manchester Public Library	19
Manchester R.O.C.S.	19
Manchester Youth Service Bureau	20
Merge Ahead at Church of the Living God	20
MusicMakers International Academy	21
Manchester Swim Club	20
Movement	21
Nutmeg Big Brothers Big Sisters	21
Robertson Elementary School	22
Soarin' Indoors	22
St. James School	23
St. Mary's Episcopal Church	23
UConn 4-H Clubs	24
Verplanck Elementary School	24
Waddell Elementary School	24
Washington Elementary School	25
White Tiger School of Taekwon-Do	25
Young @ Art	25



CONTENTS



HEALTH & WELLNESS



Academy of Martial Arts & Personal Development	5
Atwater Martial Arts	5
Boy Scouts of America	7
Elizabeth M. Bennet Academy	10
Excursions in Learning Youth Programs	10
Girl Scouts of Connecticut	11
i9 Sports	12
Julie Lang Studio of Dance	13
Manchester Basketball Association	15
Manchester Continuing Education	16
Manchester Early Learning Center (MELC)	16
Manchester High School	16
Manchester Neighborhood Academy	17
Manchester Parks and Recreation Department	17
Manchester Police Activities League, Inc.	17
Manchester Public Library	19
Manchester Youth Service Bureau	20
MARCH Inc. of Manchester	20
MusicMakers International Academy	21
Movement	21
Odiyana Meditation Center	22
Soarin' Indoors	22
UConn 4-H Clubs	24
White Tiger School of Taekwon-Do	25



COLLEGE & CAREER READINESS



Capital Workforce Partners	8
Girl Scouts of Connecticut	11
Manchester Continuing Education	16
Manchester High School	16
Manchester Neighborhood Academy	17
Manchester Public Library	19
Manchester Youth Service Bureau	20
MCC on Main	20
MusicMakers International Academy	21



ARTS & CULTURE



A.C. Moore	5
Beller's Music	6
Beth Sholom B'nai Israel	6
Bowers Elementary School	6
Boy Scouts of America	7
CAST Children's Theatre	8
Connecticut Concert Ballet	8
Connecticut Drum Academy	8
Connecticut Firemen's Historical Society	9
Connecticut Odyssey of the Mind	9
Excursions in Learning Youth Programs	10
Firm Foundation Leadership Coalition, Inc.	11
Girl Scouts of Connecticut	11
Highland Guitar Studio	11
Home Depot Kids Workshops	12
Howell Cheney Technical High School	12
Illing Middle School	12
JoAnn Fabrics and Craft Stores	13
Julie Lang Studio of Dance	13
Lee Piano Studio	13
Lowes - Store #0763	14
Lutz Children's Museum	14
Manchester Church of the Nazarene	16
Manchester Continuing Education	16
Manchester High School	16
Manchester Historical Society	17
Manchester Neighborhood Academy	17
Manchester Parks and Recreation Department	17
Manchester Public Library	19
Manchester School of Dance Arts	19
MCC on Main	20
Michaels Arts & Crafts Store	20
MusicMakers International Academy	21



ARTS & CULTURE CONTINUED

Northstar Dance Academy	21
PhotoSynthesis, LLC	22
Robertson Elementary School	22
St. James School	23
St. Mary's Episcopal Church	23
Summit Studios	23
The Werner Music Studio	23
TimeMachine Hobby	24
Verplanck Elementary School	24
Waddell Elementary School	24
Washington Elementary School	25
Wee Care Day Care	25
Young @ Art	25



CHILDCARE



ABC Day Care	5
Autumn Street Care Childcare	6
Bowers Elementary School	6
Forever Young Childcare Learning Center	11
Little Debbie's Preschool	14
Little Duckling Child Care	14
Lutz Children's Museum	14
Manchester Early Learning Center (MELC)	16
Manchester High School	16
Manchester Parks and Recreation Department	17
Manchester Public Library	19
Robertson Elementary School	22
The Children's Place, Inc.	23
Verplanck Elementary School	24
Waddell Elementary School	24
Washington Elementary School	25
Wee Care Day Care	25



FAITH-BASED



Beth Sholom B'nai Israel	6
Emanuel Lutheran Church	10
Faith Tabernacle	10
Full Gospel Interdenominational Church	11
Iglesia R.E.D. (Restaurados en Dios), IEDJ, Inc.	12
LifeSong Church	14
Manchester Church of Christ Youth Group	15
Manchester Church of the Nazarene	16
Merge Ahead at Church of the Living God	20
St. James School	23
St. Mary's Episcopal Church	23
Trinity Covenant Church	24

[OUT OF SCHOOL] TIME RESOURCES

Additional Resources	26
----------------------	----

A.C. Moore

Arts & Culture

A. C. Moore offers crafting classes for youth and adults. Topics include jewelry making, cake decorating, water color painting, and seasonal crafting. Programs are offered after school, evenings, weekends, summer breaks, and school vacations.

Organization Type: For Profit

Age range: 12 to adult.

Cost range: \$12 to \$100.

179C Hale Road
Manchester, Connecticut 06042
www.acmoore.com
(860) 648-0563

ABC Day Care

Childcare

The objective of ABC Day Care is to create an atmosphere that is safe, affordable, diversifying, and stimulating for both children and parents. Where lifetime learning begins. Programs are offered before school, after school, and summer break.

Organization Type: For Profit

Age range: 6 weeks to 12 years.

Cost range: From \$60 per week (for before school care) to \$235 per week (for infant care).

358 Hartford Road
Manchester, Connecticut 06040
(860) 647-0788

Academy of Martial Arts & Personal Development

Sports & Recreation, Health & Wellness, Positive Youth Development, Academics

The Academy is a martial arts, cardio, and after-school-care school in the Manchester area. Our after-school program goes to your child's school to pick them up and bring them to the Academy to help them with their homework and make sure it's done right. Programs are offered after school, evenings, summer break, and school vacation break.

Organization Type: For Profit

Age range: 4 to adult.

Cost range: From \$39 per month for 16+ programs to \$85 per week for After-School Martial Arts program.

440 Oakland Street
Manchester, Connecticut 06042
www.theacademy.us
(860) 646-7993

Atwater Martial Arts

Sports and Recreation, Health & Wellness, Positive Youth Development

Offers training in martial arts, physical fitness, and self-defense for men, women, and children of all ages and abilities. Programs are offered after school, evenings, and weekends.

Organization Type: For Profit

Age range: 3 to adult.

Cost range: Call for more information.

698 Hartford Road
Manchester, Connecticut 06040
www.atwatermartialarts.com
(860) 432-9945



Autumn Street Care Childcare

Autumn Street Care is a home daycare that provides childcare for children 6 weeks to five years old as well as a preschool curriculum. It also provides after school care for elementary school aged children and is run by a former preschool teacher with a masters degree in education. Programs are offered after school, summer break, and school vacation break.

Organization Type: For Profit

Age Range: 6 weeks to 5 years for childcare.

After school care offered through elementary school aged.

Price range: From \$20 - \$42 (daily rate).

Autumn Street
Manchester, Connecticut 06040
www.autumnstreetcare.com
(860) 817-2425

Beller's Music

Arts & Culture

Beller's Music is a family-owned and operated comprehensive music store, offering instrument sales and rentals, instrument repairs, and music instruction. After school hours and on Saturdays, many students of all ages come for private instruction and performance opportunities. Programs are offered after school, evenings, weekends, summer breaks, and school vacations.

Organization Type: For Profit

Age range: 4 to adult.

Cost range: \$20 to \$30 per 1/2 hour private instruction.

881 Main Street
Manchester, Connecticut
06040
www.bellersmusic.com
(860) 649-2036



Beth Sholom B'nai Israel

Faith-Based, Arts & Culture, Positive

Youth Development

Beth Sholom B'nai Israel is a progressive Conservative synagogue located in Manchester, Connecticut. We have member-families drawn from all over central Connecticut, including traditional and non-traditional families, single-parent families, interfaith couples, singles and senior citizens. Both Jews by birth and Jews by choice are part of our community. We are proud of our diversity. Programs are offered after school, evenings, and weekends.

Organization Type: Faith Based

Age range: Pre-K to adult.

Cost range: Free to \$270.

400 East Middle Turnpike
Manchester, Connecticut 06040
www.myshul.org
(860) 643-9563



Bowers Elementary School (21st Century at Bowers)

Academics, Sports & Recreation, Arts & Culture, Positive Youth Development, Childcare

An after school program subsidized by a federal grant that supplies certified teachers and tutors for an academic hour. A second hour involves specific enrichment activities. Our program is located at Bowers Elementary School and provides only for Bowers students. Other schools in Manchester also have the same program. [Bowers Elementary also offers an on-site Family Resource Center; see page 10. Also see MELC, page 16.]

Organization Type: Government

Age range: Grades K-5.

Cost range: \$140 per year (2014 – 2015 only) to \$240 per year (2014-2015 only).

141 Princeton Street
Manchester, Connecticut 06042
www.mpspride.org
(860) 647-3313



Boy Scouts of America Connecticut Rivers Council Hockanum River District

Positive Youth Development, Academics, STEM, Sports & Recreation, Arts & Culture, Health & Wellness

The Hockanum River District of the Connecticut Rivers Council, Boy Scouts of America prepares young people to make ethical and moral choices over their lifetimes by instilling in them the values of the Scout oath and law. The Hockanum River District delivers Scouting programs to nearly 3000 youth and over 1000 adults. Programs are offered after school, evenings, weekends, summer breaks, and school vacations.

Organization Type: Nonprofit

Age Range: 7 – 20.

To find your local Joining Night, visit:
www.ctrivers.org/join.

To find your local unit, visit:
www.beascout.scouting.org.

Contact a Hockanum River District representative at (860) 479-2728.

Troop 25

Troop 25 offers an exciting and instructive program to boys ages 11-18 stressing character development and appreciation of the out-of-doors with age appropriate activities leading up to high adventure trips, for example a one week backpacking trip on the Appalachian Trail. Programs are offered evenings, weekends, and summer breaks.

Age range: 11 -18.

Cost range: \$75 yearly dues. Additional fee of at least \$380 for summer camp attendees.

11 Center Street
Manchester, Connecticut 06040
www.troop25.com
(860) 649-1194

Cub Scout Pack 47

An active Cub Scout Pack in Manchester serving boys Grades 1-5 with a variety of family oriented and age appropriate scouting activities. Programs are offered evenings.

Age range: 6 – 12.

Cost range: Dues are \$50 per year.

1226 Main Street
Manchester, Connecticut 06042
www.manchesterpack47.org
(860) 808-7322

Troop 47

Meets at South United Methodist Church. Programs are offered evenings.

Age range: 10.5 – 18.

Cost range: \$39+.

South United Methodist Church
1226 Main Street
Manchester, Connecticut 06040

Cub Scout Pack 123

Meets at Community Baptist Church. Programs are offered evenings.

Age range: 6-10.

Cost range: \$39+.

Community Baptist Church
585 East Center Street
Manchester, Connecticut 06040

Troop 123

Meets at Community Baptist Church. Programs are offered evenings.

Age range: 10.5 - 18.

Cost range: \$39+.

Community Baptist Church
585 East Center Street
Manchester, Connecticut 06040

Manchester Pack 144

Since 1930, the Boy Scouts of America has helped younger boys through Cub Scouting. It is a year-round family program designed for boys who are in the first grade through fifth grade (or 7, 8, 9, and 10 years of age). Programs are offered evenings and weekends.

Age range: 7 - 12.

Cost range: From \$48 (Registration) to \$65 (Overnight trip).

41 Pitkin Street
Manchester, Connecticut 06040
www.manchesterpack144.org
(860) 432-2022



Buckley Elementary School

Academics, Sports & Recreation

Buckley Elementary School offers out-of-school-time programming for Buckley students through Manchester Early Learning Center (MELC). Please see MELC, page 16. Buckley Elementary also offers a running club for Buckley students in Grades 1-5.

Organization Type: Government

250 Vernon Street
Manchester, Connecticut 06040
www.mpspride.org
(860) 647-3302

Capital Workforce Partners Youth Programs

College & Career Readiness, Positive Youth Development

The Workforce Investment Board in North Central Connecticut offers a variety of programs and training opportunities for youth. Provides youth employment opportunities in Manchester in partnership with local organizations.

One Union Place
Hartford, Connecticut 06103
www.capitalworkforce.org/youth-resources
(860) 522-1111



CAST Children's Theatre

Arts & Culture

Description: CAST is a theater organization helping to preserve the arts in the greater Manchester area and beyond. The mission of CAST is to enrich the lives of children through the magic of performing arts, thereby inspiring them to strive toward higher goals. We do this one line at a time, one show at a time, one child at a time. Programs are offered after school, evenings, weekends, and summer breaks.

Organization Type: Nonprofit

Age range: 5 to 18.

Cost range: \$225 to \$285.

Post Office Box 1268
113 Summit Street
Manchester, Connecticut 06045-1268
www.casttheatre.org
Phone: (860) 649-5062

Connecticut Concert Ballet

Arts & Culture, Performing Arts

At CCB we work closely with parents to ensure each student is properly trained, supported and nurtured. We stress the importance of teamwork and strive to foster friendships and a mutually supportive, encouraging environment among students across all age levels. Programs are offered after school, evenings, weekends, and summer breaks.

Organization Type: Nonprofit

Age range: 3 to Adult.

Cost range: Call for more information.

280 Garden Grove Road
Manchester, Connecticut 06040
www.ctconcertballet.org
(860) 643-4796

Connecticut Drum Academy

Arts & Culture

Offers drum set, percussion, mallets, timpani, conga, electronic drums, piano, and keyboard lessons for children and adults. Individual lessons, group lessons and private instruction available.

Organization Type: For Profit

Age range: 4 to adult.

Cost range: \$30/half hour (for individual lessons) to 112.75 (monthly tuition for private instruction).

185 Middle Turnpike West
Manchester, Connecticut 06040
www.ctdrumacademy.com
(860) 461-DRUM (3786)



Connecticut Firemen's Historical Society

Arts & Culture, Positive Youth Development

Connecticut Firemen's Historical Society is dedicated to the preservation of early Connecticut and American firefighting history and artifacts. We operate The Fire Museum and provide tours of our collection and historical education. Programs are offered on weekends.

Organization Type: Nonprofit

Age range: 8 to adult.

Cost range: Free to \$2.00 per person.

230 Pine Street
Manchester, Connecticut 06040
www.TheFireMuseum.org
(860) 649-9436

Connecticut Odyssey of the Mind (CTOM)

STEM, Academics, Arts & Culture, Creative Problem Solving

Odyssey of the Mind is an international educational program that provides creative problem-solving opportunities for students from kindergarten through college. Team members apply their creativity to solve problems that range from building mechanical devices to presenting their own interpretation of literary classics. Call for more information.

Organization Type: Nonprofit

Age range: Kindergarten through college.

CTOM, Inc.
Post Office Box 554
East Granby, Connecticut 06026
www.ctom.org
(860) 219-9799

Odyssey of the Mind - Manchester, CT
Manchester, Connecticut
<https://www.facebook.com/OMofManchester>

CT Knights, Inc.

Sports and Recreation, Academics, Positive Youth Development

Boys and girls sports and tutoring/mentoring program that offers Basketball, Football, & Flag Cheerleading for grades K-12. Programs are offered after school, evening, weekends, and summer breaks.

Organization Type: Nonprofit.

Age range: K - 12.

Cost range: \$125-750. Sponsorship and payment plans are available.

91 Essex Street
Manchester, Connecticut 06040
www.ctknights.com
www.manchestermidget.com
(860) 432-0803

Dragon Karate

Sports & Recreation

Dragon Karate provides instruction in kempo karate to students of all abilities and ages. Kempo karate is a practical system of self defense for everyone. Programs offered evenings, weekends, summer breaks, and school vacations.

Organization Type: For Profit

Age range: 4 to adult.

Cost range: \$50 per month to \$125 per month.

991 Main Street
Manchester, Connecticut 06040
www.CTDragonKarate.com
(860) 432-1660

Eastern Connecticut Hockey Organization (ECHO)

Sports & Recreation

Programs offered include the Learn to Play Program for first time and novice skaters; the Mini Mites Program for children who have completed at least one year of the Learn to Play Program; the In House "FUN"demental Hockey Program for children with previous skating experience; and travel hockey teams for various age groups. Programs are offered evenings and weekends.

Organization Type: Nonprofit.

Age range: 3-14.

Cost range: Up from \$165/8 week Learn to Play Program. Loaner equipment and payment plans are available.

In-house programs offered in partnership with:
Bolton Ice Palace
145 Hop River Road
Bolton, Connecticut 06043
For current contact information visit the website.
www.echostars.com





Elizabeth M. Bennet Academy

Academics, Sports & Recreation, Health & Wellness, Positive Youth Development

Elizabeth M. Academy offers a wide variety of clubs and enrichment activities for students of Bennet Academy; call for more information. Bennet Students are also eligible for the lottery-based FLASH After School Program; for more information, see Manchester Parks and Recreation, page 18.

Organization Type: Government

Age range: Grade 6.

Cost range: Call for more information.

1151 Main Street
Manchester, Connecticut 06040
www.mpspride.org
(860) 647-3571

Emanuel Lutheran Church

Faith-Based

Christian congregation with weekly Sunday School classes September to May and a summer Vacation Bible School (1 week in early summer). Programs offered weekends and summer breaks.

Organization Type: Faith-Based

Age range: 4 -11.

Cost range: Free to \$20.

60 Church Street
Manchester, Connecticut 06040
www.emanuelmanchester.org
(860) 643-1193

Excursions in Learning Youth Programs

STEM, Academics, Arts & Culture, Health & Wellness, Culinary Arts, Positive Youth Development

Excursions in Learning Youth Programs provides full-day and half-day academic enrichment programs for students in grades K-8. Courses are hands-on, creative, and engaging. Programs offered weekends and summer Breaks

Organization Type: Nonprofit

Age range: K-8.

Cost range: \$40 for 1 session class (3 hours) to \$550 for full-day enrollment at Summer Academy for Gifted Youth (need-based scholarships available).

Great Path MS #16
Post Office Box 1046
Manchester, Connecticut 06045
www.manchestercc.edu/excursions
(860) 512-2804.

Faith Tabernacle

Academics, Faith Based

Faith Tabernacle offers the In-Focus tutoring program for students in grades K-12 on Thursday evenings. Also offers a variety of youth activities and programs for 6th-12th graders on Friday and Saturday nights.

Organization Type: Faith Based

Age range: K-12

Cost range: Free.

110 Utopia Road
Manchester, Connecticut 06042
www.faithtabernacle.com
(860) 649-9848

Family Resource Centers at Manchester Public Schools

Positive Youth Development, Playgroups, Family Engagement, Outreach

The Family Resource Centers (FRCs) offer partnership and support for the entire family in a location that is the hub of family activity for many years—the school. Offerings include community resources, parenting education workshops, positive youth development, and playgroups.

Organization Type: Nonprofit

Age range: Newborn to adult.

Cost range: Free.

www.mpspride.org
FRCs are located at:
Bowers Elementary School (see page 6).
Robertson Elementary School (see page 22).
Verplanck Elementary School (see page 24).
Waddell Elementary School (see page 24).

Please call the main office of the school closest to you for more information.

Family Resource Center at Washington School (ECHN Family Development Center)

Positive Youth Development

In addition to providing a variety of support and resources for young families—including parent education and home visits—we offer positive youth development programs for school-aged children. Programs for school-aged children are offered afterschool. Also see, Washington Elementary School (Page 25).

Organization Type: Nonprofit

Age range: Grades K-5th.

Cost range: Free.

Washington School
45 North School Street
Manchester, Connecticut 06042
www.echn.org/fdc
(860) 647-3330



Firm Foundation Leadership Coalition, Inc.

Arts & Culture, Positive Youth Development

Firm Foundation Leadership Coalition is a social benefit organization providing Latino community leadership development and economic independence. We promote a holistic approach to the entire human-being in order to bring balance into one's life through Latino arts, theatre, music, dance and culture. Programs offered after school, evenings, and summer breaks.

Organization Type: Nonprofit

Age range: 16 - adult.

Cost range: \$25 to \$100.

9 Coughlin Road
Manchester, Connecticut 06040
www.firmfoundationcoalition.org
(860) 748-2906

Forever Young Childcare Learning Center

Childcare

At Forever Young Childcare Learning Center, we provide children with the highest quality early care and education and serve as a supportive network and resource for families, strengthening the community that we serve.

Organization Type: For Profit

Age Range: 6 weeks to age 12.

Price Range: Promotional rates available.

80 Buckland Street
Manchester, Connecticut 06042
www.foreveryoungchildcarelc.com
(860) 533-1888

Full Gospel Interdenominational Church

Faith-Based, Positive Youth Development

FGI Church sponsored program called "Wally's Friendship Club" is a youth outreach ministry reaching out to the neighborhood to show how much God loves them. We teach good values to the children and want them to know that God has a plan for their lives. Programs are offered weekends.

Organization Type: Faith-Based

Age Range: Grade K-8.

Price Range: Free.

745 Main Street
Manchester, Connecticut 06045
www.fgichurch.org
860-646-8731

Girl Scouts of Connecticut—Hartford Service Center

Positive Youth Development, Arts & Culture, Health & Wellness, STEM, Sports & Recreation, College & Career Readiness, Anti-Bullying Programs

Girl Scouts of Connecticut builds girls of courage, confidence, and character, who make the world a better place. Programs are offered after school, evenings, weekends, summer breaks, and school vacations.

Organization Type: Nonprofit

Age range: 5 – 17.

Cost range: Varied costs. See website for details.

340 Washington Street
Hartford, Connecticut 06106
www.gsofct.org
(860) 522-0163 or (800) 922-2770

Girl Scouts of Connecticut Merrie-Wood Day Camp

Camp Merrie-Wood is a Girl Scouts of Connecticut summer day camp that operates in Manchester each summer.

650 Gardner Street
Manchester, Connecticut 06040
www.gsofct.org
(203) 239-2922 (outdoor programs department)/(860) 649-4209(seasonal)

Highland Guitar Studio

Arts & Culture

Offers guitar instruction for youth and adults. Call for more information.

185 Middle Turnpike West
Manchester, Connecticut 06042
www.timmaynard.com/highland-guitar-studio
(860) 866-5697

Highland Park Elementary School

Academics

Highland Park Elementary School offers out-of-school-time programming for Highland Park students through Manchester Early Learning Center (MELC). Please see MELC, page 16.

Organization Type: Government

397 Porter Street
Manchester, Connecticut 06040
www.mpspride.org
(860) 647-3430

Home Depot Kids Workshops

Arts & Culture (Crafts)

The Home Depot Kid Workshops are held the first Saturday of every month from 9 am - 12 pm for children 5-12 years. The workshops are free and each workshop the children can build something different. Programs offered weekends.

Organization Type: For Profit

Age range: 5 - 12.

Cost range: Free.

80 Buckland Hills Drive

Manchester, Connecticut 06040

<http://workshops.homedepot.com/workshops/kids-workshops>

(860) 644-5588

Howell Cheney Technical High School

Academics, Sports & Recreation, STEM, Positive Youth Development, Arts & Culture

Offers a variety of student clubs and activities for students of Cheney Tech. The athletics program provides opportunities for students to participate in seasonal sports teams and activities, including cross country, football, soccer, volleyball, basketball, baseball, golf, outdoor track and field, and softball.

Organization Type: Government

Age range: Cheney Tech Students in Grades 9-12.

Cost range: Varies.

791 West Middle Turnpike

Manchester, Connecticut 06040

www.cttech.org/cheney

(860) 649-5396

i9 Sports

Sports & Recreation, Inclusive & Specialized Recreation, Health & Wellness

i9 Sports offers fun, safe & convenient sports leagues for children 3 and up. We offer flag football, soccer, t-ball, and basketball programs with a one-day-a-week commitment—practice is held right before the game! Programs are offered weekends.

Organization Type: For Profit

Age range: 3-14.

Cost range: \$100 to \$145.

1131 Tolland Turnpike

Suite #137

Manchester, Connecticut 06042

www.i9sports.com

(860) 454-8424

Iglesia R.E.D. (Restaurados en Dios), IEDJ, Inc.

Faith-Based

Iglesia R.E.D. (Restaurados en Dios) provides a variety of activities for children, youth, adults, promoting the integration of the family, and brings them closer to God. Programs offered weekends.

Organization Type: Faith-Based

Age range: 3 to adult.

Cost range: Free.

82F Queens Court

Manchester, Connecticut 06040

www.iglesiared.org

(860) 713-3727

Illing Middle School

Academics, Sports & Recreation, Arts & Culture, STEM

Illing Middle School offers a wide variety of extracurricular programs for Illing students, including a multitude of year-round sporting activities and a wide variety of clubs. Activities are offered evenings, afterschool, weekends, school breaks, and summer vacations.

Organization Type: Government

Age range: Grades 7-8.

Cost range: Varies.

27 Middle Turnpike East

Manchester, Connecticut 06040

www.mpspride.org

(860) 647-3400



JoAnn Fabrics and Craft Stores

Arts & Culture

Description: JoAnn Fabric and Crafts offers engaging classes for kids 5 and older, including sewing, quilting, cake decorating, knitting and crochet. Programs offered evenings, weekends, summer breaks, and school vacations.

Organization Type: For Profit

Age range: 5 to adult.

Cost range: Call for more information.

1440 Pleasant Valley Road
Manchester, Connecticut 06042
www.joann.com
(860) 648-1845



Julie Lang Studio of Dance

Arts & Culture, Sports & Recreation, Inclusive & Specialized Recreation, Health & Wellness

Julie Lang Studio of Dance is a dance school where students of almost all ages can get a dance education and fitness training. Styles of dance include preschool, tap, jazz, lyrical, contemporary, hip hop, breakin', Latin/Salsa, Zumba, Bootcamp fitness, and ballet for ages 3 to adult. Julie Lang Studio of Dance also has a summer kids camp that has three sessions taking place for nor week in June, July and August. Programs offered after school, evenings, weekends, summer breaks, and school vacations.

Organization Type: For Profit

Age range: 3 to Adult.

Cost range: \$44 per month for one class a week to \$200 per month for unlimited classes.

40 Oak Street
Manchester, Connecticut 06040
www.jlsdance.com
(860) 649-0256

Jump Start Kindergarten

Academics

The Jumpstart Kindergarten is a wonderful and nurturing place for children to acquire academic readiness, social/emotional, receptive and expressive language, personal-social, self-help, and motor skills. The program is offered to incoming kindergarten students who did not have any preschool experience. This program is offered during summer break.

Organization Type: Government

Age range: 4 - 5.

Cost range: Free.

60 Washington Street
Manchester, Connecticut 06040
www.mpspride.org
(860) 647-3483

Keeney Street Elementary School

Academics

Keeney School offers out-of-school time programming for Keeney students through Manchester Early Learning Center (MELC). Please see MELC, page 16.

Organization Type: Government

179 Keeney Street
Manchester, Connecticut 06040
www.mpspride.org
(860) 647-3354

Lee Piano Studio

Arts & Culture, Music Education

Lee Piano Student offers private piano lessons for all ages and levels. Programs offered after school and evenings.

Organization Type: For Profit

Age range: 5 to adult.

Cost range: \$30 for 30-minute weekly sessions.

5 Amanda Drive
Manchester, Connecticut 06040
www.leepiano.com
(860) 432-3145



LifeSong Church – Manchester

Faith-Based, Family Activities

LifeSong Church partners with Manchester organizations to offer free community activities for Manchester families.

Organization Type: Faith-Based

Cost range: Free.

33 Park Street

Manchester, Connecticut 06040

www.lifesongmanchester.com

(860) 812-1940

Little Debbie's Preschool

Academics, Childcare

Little Debbie's Preschool is a small home preschool program with extended hours. Before and after school children are welcome too. Programs are offered before school, after school, summer break, and school vacation break.

Organization Type: For Profit

Age range: 18 months to 12 years.

Cost range: \$230 a week.

62 Woodhill Road

Manchester, Connecticut 06042

www.LittleDebbiesPreschool.com

(860) 558-5811

Little Duckling Child Care/ L. Behrmann

Childcare

Connecticut License Child Care for over 24 years in Manchester. School-age program gives children a homework-friendly environment, with a strong emphasis on daily reading. Plus free time for age-appropriate activities. Children are given morning and afterschool meals or snacks. The LDCC is member of the Access Food Program. Programs offered before school, after school, summer breaks, and school vacations.

Organization Type: For Profit

Age range: 1 year to 12 years.

Cost range: From \$90 a week for before and after school to \$250 for full time.

512 Taylor Street

Manchester, Connecticut 06042

www.littleducklingchildcare.com

(860) 643-0880

Lowes – Store #0763

Arts & Culture (Crafts)

Offers free weekend Build and Grow Workshops

Kids Clinics select Saturdays at 10am. Visit

www.lowesbuildandgrow.com for more information.

Organization Type: For Profit

Cost range: Free.

31 Buckland Hills Drive

Manchester, Connecticut 06042

www.lowes.com

(860) 644-7220

Lutz Children's Museum

Arts & Culture, Childcare, Sports & Recreation, STEM, Positive Youth Development

The Lutz Children's Museum is a non-profit organization offering hands-on learning opportunities to young children. Museum services include hands-on exhibits, live animals, classes, school-based programs, afterschool programs, summer camp, and nature center. Programs offered after school, evenings, summer breaks, and school vacations.

Organization Type: Nonprofit

Age range: Classes are offered for ages birth to 10. The museum is open to all ages.

Cost range: Free to \$250.

247 South Main Street

Manchester, Connecticut 06040

www.lutzmuseum.org

(860) 643-0949

Malee's School of Tai Chi & Kung Fu

Sports & Recreation, Positive Youth Development

Malee's School of Tai Chi & Kung Fu is a Chinese martial arts school that teaches Chinese Kung Fu to children starting at age of 3, providing discipline while promoting self-confidence, fitness, and self defense. Programs are offered after school, evenings, weekends, summer breaks, and school vacations.

Organization Type: For Profit

Age range: 3 to adult.

Cost range: Call for more information.

249 Broad Street

Manchester, Connecticut 06040

www.malees-tai-chi-kung-fu.com

(860) 646-6818



Manchester American Legion Baseball

Sports & Recreation

Manchester American Legion Baseball provides the competitive baseball for players 13 - 19 years of age. Programs are offered after school, evenings, weekends, and summer breaks.

Organization type: Nonprofit

Age range: 13 - 19.

Cost range: \$100 to \$300.

55 Bobby Lane

Manchester, Connecticut 06040

www.manchlegion.com

(860) 670-1767

Manchester Babe Ruth Baseball

Sports & Recreation

Baseball for children age 13-15 for summer leagues and 12-14 year-olds for Fall Ball. Most games are played at Moriarty Field at Mount Nebo Park, but we have summer travel teams that play in the Hartford County area. Programs offered evenings, weekends, and summer breaks.

Organization Type: Nonprofit

Age range: 12 -15.

Cost range: \$100 to \$150.

www.manchesterbaberuthbaseball.webs.com

(860) 508-4133



Manchester Basketball Association

Sports & Recreation, Health & Wellness

The Manchester Basketball Association is a girls and boys developmental basketball league with seasons held during the spring and fall of each year. For further information, visit www.playmba.net. Programs are offered evenings.

Organization Type: Nonprofit

Age range: For boys, Grade 4 – Grade 8. For girls, Grade 4 – Grade 9.

Cost range: \$65 -70.

112 Jacqueline Drive

Manchester, Connecticut 06040

www.playmba.net

(860) 748-2596

Manchester Brazilian Jiu-Jitsu (Manchester BJJ)/Bushido Jiu-Jitsu Academy

Sports & Recreation, Positive Youth Development

Offers martial arts programming, specializing in Gracie Jiu-Jitsu (a self-defense martial art), for children and adults. Both group and private classes for children and youth in Jit-Jitsu or Muay Thai.

Organization Type: For Profit

Age range: 5 to adult.

Cost range: \$60 - \$120/month (2 week free trial).

60B Progress Drive

Manchester, Connecticut 06040

www.manchesterbjj.com

(860) 377-7897

Manchester Church of Christ Youth Group

Faith-Based, Positive Youth Development

The Manchester Church of Christ Youth Group is an organization that focuses on equipping teenage students to grow closer to God and each other so that they can experience the fullness of life through Christ. Programs offered evenings, weekends, and summer breaks.

Organization Type: Faith-Based

Age range: 12-18.

Cost range: Free.

595 Tolland Turnpike

Manchester, Connecticut 06042

www.manchesterchurchofchrist.org

(860) 646-2903



Manchester Church of the Nazarene

Faith-Based, Arts & Culture, Academics

MCN is a Christian church that offers a parochial school program, youth night activities, music lessons, and an academic program to prepare children for kindergarten; it also provides Christian Education Classes. Programs offered after school, evenings, and weekends.

Organization Type: Faith-Based

Age range: 3 to adult.

Cost range: Free to tuition-based educational programs, \$5,500/annually.

218 Main Street

Manchester, Connecticut 06042

www.mcnaz.com

(860) 646-8599

Manchester Continuing Education

College & Career Readiness, Academics, Arts & Culture, Health & Wellness, Sports & Recreation

Manchester Adult and Continuing Education is a town of Manchester program which provides a variety of ways adults can work on their high school and college learning goals. It also provides enrichment courses for children and adults. Programs are offered after school, evenings, and school vacations.

Organization Type: Government

Age range: 5 to adult.

Cost range: \$19 - \$109.

901 Main Street

Manchester, Connecticut 06040

www.manchesteradulthood.org

(860) 647-5075

Manchester Country Club

Sports & Recreation

Offers golf lessons for all ages, including the Start New at Golf (SNAG) program—a fun, positive introduction to the sport for 4-7 year olds, and summer programs for youth ages 10-17. For more information contact John Cooke, Director of Golf.

Organization Type: For Profit

Age range: 4 to adult

Cost range: Intro. clinics start at \$10 per child for 1 hour of group instruction.

305 South Main Street

Manchester, Connecticut 06040

www.mancc.com

(860) 646-0226

Manchester Early Learning Center (MELC)

Academics, Childcare, Positive Youth Development, Sports & Recreation, Health & Wellness

MELC offers parents a safe, enriching, and fun program for children 5-12 years which includes homework help, enrichment activities, sports, and a healthy snack. MELC offers out-of-school-time programming for all public elementary schools in Manchester including Odyssey Community School. Programs offered before school, after school, summer breaks, and school vacations.

Organization Type: Nonprofit

Age range: 5 to 12.

Cost range: Childcare is offered by the morning/afternoon, day, week, or month with costs ranging from \$12 to \$196. Care 4 Kids Certificates are accepted.

80 Waddell Road

Manchester, Connecticut 06040

www.melearning.org

(860) 647-9659

Manchester High School

Academics, STEM, Sports & Recreation, Inclusive & Specialized Recreation, Arts & Culture, Health & Wellness, Positive Youth Development, College & Career Readiness, Childcare

Manchester High Serves approximately 1600 students primarily in grades 9-12 and has a wide range of academic, athletic, cultural programs—and more. We also have adult education programs and host a variety of community events. Programs offered before school, after school, evenings, weekends, and summer breaks.

Organization Type: Government

Age range: 13 to Adult.

Cost range: Varies (starting at free).

134 East Middle Turnpike

Manchester, Connecticut 06040

www.MHSRedline.com

(860) 647-3521



Manchester Historical Society

Arts & Culture

The Manchester Historical Society educates the public about the history of Manchester, Connecticut; collects, preserves, interprets, & exhibits information and artifacts about the town and its diverse populations; also advocates for the preservation of significant historical resources. The Historical Society, offers a variety of walking tours, lectures, fundraisers, and other activities throughout the year, as well as open houses and visiting hours at the Manchester History Center, the Old Manchester Museum, and Cheney Homestead. Visit the website or call for information on upcoming programs and events.

Organization Type: Nonprofit

Age range: All Ages.

Cost range: Most walking tours and lectures are free for children under 16.

175 Pine Street
Manchester, Connecticut 06040
www.manchesterhistory.org
(860) 647-9983

Manchester Little League

Sports & Recreation

Description: Manchester Little League baseball and softball is a non-profit organization which offers boys and girls the opportunity to play from ages 5-12.

Programs are offered after school, evenings, summer breaks, and school vacations.

Organization Type: Nonprofit

Age range: 5 - 12.

Cost range: Call for more information.

18 Thomas Drive
Manchester, Connecticut 06040
www.manchesterlittleleague.org



Manchester Neighborhood Academy

Positive Youth Development, Academics, Arts & Culture, Health & Wellness, College & Career Readiness

Manchester Neighborhood Academy is a government operated program by the Town of Manchester Office of Neighborhoods and Families. The Academy and its program partners provide a menu of free educational programs to families in the following areas: Family Economic Success, Youth Development, Adult Development, Health and Safety, Community Engagement, Creative Development, and Early Childhood. Programs are offered after school, evenings, weekends, and summer breaks.

Organization Type: Government

Age range: 10 to adult.

Cost range: Free.

East Side Neighborhood Resource Center
153 Spruce Street
Manchester, Connecticut 06040

Mailing Address
41 Center Street, Post Office Box 191
Manchester, Connecticut 06040

<http://naf.townofmanchester.org>
(860) 647-3089

Manchester Parks and Recreation Department

See facing page.

Manchester Police Activities League, Inc.

Sports & Recreation, Academics, Positive Youth Development, Health & Wellness, Social Development & Character Building

PAL creates opportunities for positive interactions between police officers, positive and responsible adults and youth in Manchester, in support of youth success. Offerings include Academic Success Club (ASC), PAL Judo Club, PAL Karate Club, PAL Mountain Biking Club & PAL/Manchester Police 3-on-3 Basketball Series. Programs are offered after school, evenings, and summer breaks.

Organization Type: Nonprofit

Age range: 5 - 18.

Cost range: Free to \$125.

239 Middle Turnpike East
Manchester, Connecticut 06040
www.manchesterctpal.org
(860) 645-5525

Manchester Police Explorers

Positive Youth Development

Manchester Police Explorers is a program designed to educate young people about law enforcement while instilling essential core values to make them valuable members of society. This ongoing year round program meets every Tuesday, 6:00 - 8:00 pm. This program is offered evenings, summer breaks, and school vacations.

Organization Type: Government

Age range: 14-20.

Cost range: \$5 monthly fees to cover participant insurance.

239 Middle Turnpike East
Manchester, Connecticut 06040
www.manchesterpolice.org
(860) 645-5568



Manchester Parks and Recreation Department

Arts & Culture, Academics, Sports & Recreation, Inclusive & Specialized Recreation, Health & Wellness, Positive Youth Development, Childcare, Special Events

Manchester Parks and Recreation Department is a government agency which provides a comprehensive program of recreational opportunities for all ages and ability levels, as well as safe, attractive, well-maintained, well-managed parks and recreation facilities. Programs are offered after school, evenings, weekends, summer breaks, and school vacations.

Organization Type: Government

Age range: Birth to adult. Youth programs serve ages 0-21.

Cost range: See seasonal recreation brochure at <http://recreation.townofmanchester.org>.

Center Springs Main Office
39 Lodge Drive
Manchester, Connecticut 06040
(860) 647-3084

Access Manchester Pass

This free pass gives Manchester residents under 21 full access to Manchester's recreation facilities and public libraries. To obtain your pass, bring a valid photo ID proving Manchester residency to Customer Service Center, Town Hall, 41 Center Street (8:30 am - 5:00 pm); Manchester Parks and Recreation Main Office at Center Springs, 39 Lodge Drive (8:30 am - 4:30 pm); or to a facility-based registration site.

Parks and Recreation Facilities

Community "Y" Recreation Center

Registration Site

This recreation center offers Drop-In Rec Hours on Saturdays, 10 am-5pm. The Community "Y" Fitness Center offers free weights, a multi-station gym, and cardio equipment. Call for more information.

78 North Main Street
Manchester, Connecticut 06042
(860) 647-3194

Mahoney Recreation Center

Registration Site

Located at the West Side of Manchester, adjacent to Washington School, Mahoney Recreation Center offers recreational activities including, dodge ball, floor hockey, indoor soccer, basketball, and Nintendo Wii. Membership is required for all drop-in weekday evening and weekend use. Call for more information.

110 Cedar Street
Manchester, Connecticut 06042
(860) 647-3166

Bennet Leisure Center (at the Elizabeth M. Bennet Academy)

Offers a variety of recreational activities including; dodge ball, floor hockey, indoor soccer and basketball; board games, cards, music and Nintendo Wii; arts and crafts; and movie nights. Call for more information.

22 School Street
Manchester, Connecticut 06042
(860) 647-3571 (Ext. 5)

Aquatics Facilities

Manchester Parks and Recreation offers both indoor and (seasonal) outdoor pools. For current schedules, dial 647-3162 and Press 2.



Parks and Recreation Programs

FLASH After School Program at Bennet Academy

FLASH (Friends, Learning, Athletics, Service & Health) is a free, lottery-based, Monday-Friday after school program offering sports & games; service learning; health & wellness; homework assistance; special events & guest speakers; and field trips. FLASH is offered at Elizabeth M. Bennet Academy in the spring and fall of each academic year. For more information, visit recreation.townofmanchester.org or call Parks and Recreation at (860) 647-3079.

Summer Programs

Manchester Parks and Recreation also offers summer camps, programs, and leadership training for children and teens. Stay tuned to recreation.townofmanchester.org for information on upcoming Summer programs.



Manchester Public Library

Academics, STEM, Sports & Recreation, Inclusive & Specialized Recreation, Arts & Culture, Health & Wellness, Positive Youth Development, College & Career Readiness, Childcare

The Manchester Public Library serves as a vital link in providing information to families, promoting creative use of leisure time and life long learning. This busy public library offers free wi-fi, afterschool programs, and nearly a quarter of a million items available for borrowing, from books to Blu-Rays; downtown location plus a branch library at 100 North Main Street. Programs are offered before school, after school, evenings, weekends, summer breaks, and school vacations.

Organization Type: Government

Age range: Infant to adult.

Cost range: Free.

Public Library Locations:

Mary Cheney Library

586 Main Street

Manchester, Connecticut 06040

<http://library.townofmanchester.org>

(860) 643-2471

Whiton Memorial Branch Library

100 North Main Street

Manchester, Connecticut 06042

(860) 643-6892

Manchester R.O.C.S.

Sports & Recreation, Positive Youth Development

Boxing and training center for youth. Work with personal trainers and professionals. Great for building character and a positive channeling of energy. Programs are offered after school, evenings, summer breaks, and school vacations.

Organization Type: Nonprofit

Age range: 8 to adult.

Cost range: \$10/w for 8-17. \$30/m for 18+.

52 Main Street

Manchester, Connecticut 06040

www.manchesterrocs.com

(860) 614-8877

Manchester Running Club

Sports & Recreation

Manchester running club for all ages and abilities. Call for more information.

(860) 729-9721

www.manchesterrunningcompany.com

Manchester School of Dance Arts

Arts & Culture

Offers dance education for all levels, from pre-school to adults. Call for more information.

613 Middle Turnpike East.

Manchester, Connecticut 06040

www.manchesterdance.org

(860) 643-5710

Manchester Sentinals Pop Warner Youth Football and Cheerleading

Sports & Recreation

Manchester Sentinals Youth Football is a 501c3 non-profit organization, run solely by volunteers, which has been providing instructional and competitive football and cheerleading for student athletes between the ages of 5-14. The Sentinals program has been around since 2010. We strive to teach each participant the value of education, teamwork, sportsmanship, and respect for others. Programs are offered evenings and weekends.

Organization Type: Nonprofit

Age range: 5-14.

Cost range: \$100 – \$125. Discount for early registration.

Post Office Box 3991

Manchester, Connecticut 06040

www.manchestersentinals.org

(860) 554-0485

Manchester Ski Club

Sports & Recreation

Recreational ski club; members include children, families, and singles. For more information, visit website.

The Manchester Ski Club, Inc.

Post Office Box 1267

Manchester, Connecticut 06045

www.manchesterskiclub.org

Manchester Soccer Club

Sports & Recreation

We teach both the technical and tactical aspects of the game appropriate for all age groups and provide programs for children, ages 3 through and 16, reaching more than 1000 children a year. Programs are offered evenings, weekends, and summer breaks.

Organization Type: Nonprofit

Age range: 3-17.

Cost range: \$50 to \$200.

Post Office Box 1165

Manchester, Connecticut 06045

www.manchestersoccerclub.com



Manchester Swim Club

Sports & Recreation

Non-profit organization dedicated to fostering competitive swimming for youth ages 6–18. For more information visit, www.manchesterswimclub.org

Manchester Youth Service Bureau

Positive Youth Development, College & Career Readiness, Health & Wellness

The Manchester Youth Service Bureau is a community-based youth serving agency that provides a variety of no-cost programs and services for the purpose of helping to develop responsible youth who make positive contributions to the community. Programs are offered after school.

Organization Type: Government

Age range: Birth to 21.

Cost range: Free.

63 Linden Street
Manchester, Connecticut 06040
<http://ysb.townofmanchester.org>
(860) 647-5213

MARCH Inc. of Manchester

Health & Wellness, Respite and In-home support

Description: MARCH Inc. of Manchester is committed to enhancing the lives of persons with developmental disabilities and their families. MARCH provides individualized support in the family home and respite services. Call for more information. Programs offered before school, after school, evening, weekends, summer breaks, and school vacations.

Organization Type: Nonprofit

222 McKee Street
Manchester, Connecticut 06040
www.marchinc.org
(860) 646-4446

Martin Elementary School

Academics

Martin Elementary offers out-of-school time programming for Martin students through Manchester Early Learning Center (MELC). Please see MELC, page 16.

Organization Type: Government

140 Dartmouth Road
Manchester, Connecticut 06040
www.mpspride.org
(860) 647-3367

MCC on Main (Manchester Community College Arts and Education Center)

Arts & Culture, College & Career Readiness

MCC is a philanthropically funded arts and education center dedicated to building a culturally vibrant and economically strong downtown Manchester. Entrepreneur and arts-based programming and events are offered for youth and adults including the CREATE! A.S.A.P. [after school arts program] offered in partnership with Elizabeth M. Bennet Academy. Programs are offered after-school, evenings, and weekends.

Age range: Varies (youth to adult).

Cost range: Varies, starting at free. See website for current programs.

903 Main Street
Manchester, Connecticut 06040
www.manchestercc.edu/mcc-on-main
(860) 647-6030



Merge Ahead at Church of the Living God

Faith-Based, Positive Youth Development

Merge Ahead is a gathering for young people aimed at learning about God, as well as experiencing his life and his presence. We like to have fun, be creative, and bless others. We meet Sundays 6-8pm; we also participate in international and local community service activities throughout the year.

Organization Type: Faith-Based

Age range: 12-18

Cost range: Free.

Church of the Living God
199 Deming Street
Manchester, Connecticut 06042
www.mergeahead.com
(860) 648-0520

Michaels Arts & Crafts Store

Arts & Culture, General Kids Crafts

Discover the educational and developmental benefits of crafting in our Kids Classes. Programs are offered Saturdays 10am – 12pm.

Organization Type: For Profit

Age range: 4 – 12.

Cost range: Call for more information.

1520 Pleasant Valley Road
Manchester, Connecticut 06040
www.michaels.com

MusicMakers International Academy

Arts & Culture, Academics, Health & Wellness, Positive Youth Development, College & Career Readiness

MMA is a family-owned music and creativity school based on international ideals. We teach music lessons and classes to all ages, all levels, on all instruments including voice. Summer camp-like programs, etiquette classes, and teacher training, as well as college coaching also provided. We work closely with many of the area schools on curriculum, after school programs, enrichment, and music and the brain.

Programs are offered after school, evenings, weekends, summer breaks, and school vacations.

Organization Type: For Profit

Age range: Infants to adult.

Cost range: \$20 to \$1000.

517 Hartford Road
Manchester, Connecticut 06040
www.musicmakersacademy.com
(860) 646-3096

Movement

Health & Wellness, Sports & Recreation, Inclusive & Specialized Recreation, Positive Youth Development

The Movement THRIVE program is a fitness and wellness based program that offers a wide range of fitness and nutrition related programs designed to help children become vibrant and healthy individuals. Afterschool program for Kindergarten through 5th graders offered with B.O.E. transport to facility. Programs offered after school, summer breaks, and school vacations.

Organization Type: For Profit

Cost range: Afterschool programs start at \$69 per week.

52 Main Street
Manchester, Connecticut 06042
www.movement.net
(860) 783-5525



Northstar Dance Academy

Arts & Culture

Offers classical and contemporary dance lessons. Call for more information.

315 Green Road
Manchester, Connecticut 06042
www.northstardance.com
(860) 432-9190

Nutmeg Big Brothers Big Sisters

Positive Youth Development

For more than 100 years, Big Brothers Big Sisters has operated under the belief that every child has the ability to succeed, thrive, and reach their fullest potential in life. In partnership with local agencies, Nutmeg Big Brothers Big Sisters offers site-based, one-on-one mentoring by screened, trained volunteers. Programs offered afterschool. For more information, to enroll a child, or to volunteer, visit the website.

30 Laurel Street
Hartford, Connecticut 06106
www.nutmegbigbrothersbigsisters.org
(860) 525-5437

Odiyana Meditation Center

Health and Wellness

A non-profit meditation center open to all with the goal of teaching others how to cultivate and maintain positive, peaceful states of mind and letting go of negativity. Meditation classes offered either at the center in Glastonbury or at an alternate venue. Improve concentration; reduce stress, anger and anxiety; build confidence. Workshops tailored to the needs of the group. Programs offered after school, evening and weekends.

Organization Type: Non-profit

Age range: 4 to adults

Cost range: Varies (donation only-\$10 per class). See website for more details.

52 National Drive
Glastonbury CT 06033
www.meditationinconnecticut.org
(860) 266-6041 / info@odiyana.org

Odyssey Community School

Academics

Odyssey Community School offers out-of-school-time programming for Odyssey School students through Manchester Early Learning Center (MELC). Please see MELC, page 16.

Organization Type: Government

579 Middle Turnpike West
Manchester, Connecticut 06040
www.odysseyschool.org
(860) 645-1234

Park's U.S. Taekwondo

Sports and Recreation

Martial arts programming for children and adults. Call for more information.

391 Broad Street
Manchester, Connecticut 06040
www.ustaekwondo.webs.com
(860) 646-9500

PhotoSynthesis, LLC

Arts & Culture

PhotoSynthesis is a photographic arts and services center providing workshops in photography for most ages. Programs are offered evenings, weekends, summer breaks, and school vacation breaks.

Organization Type: For Profit

Age range: 10 - adult.

Cost range: \$25 to \$250.

136½ Pine Street
Manchester, Connecticut 06040
photosynthesisct.com
(860) 783-5443

Robertson Elementary School (21st Century at Robertson)

Academics, Sports & Recreation, Arts & Culture, Positive Youth Development, Childcare

Robertson Elementary School offers a variety of out-of-school time programs for Robertson students. Its 21st Century after school program is subsidized by a federal grant that supplies certified teachers and tutors for an academic hour. A second hour involves specific enrichment activities. [Robertson also offers an on-site Family Resource Center; see page 10. Also see MELC, page 16.]

Organization Type: Government

Age range: Currently in Kindergarten to currently in Fifth Grade.

Cost range: \$40 registration fee + \$100-\$160 for the school year to \$420 per month (summer camp program).

65 North School Street
Manchester, Connecticut 06042
www.mpspride.org
(860) 647-3372

Soarin' Indoors

Sports & Recreation, Health & Wellness, Positive Youth Development

Soarin' Indoors is a 12,000-square foot indoor aerial adventure center, including a ropes obstacle course and zip lines: the ideal venue to get some exercise, challenge yourself, and have fun! Programs are offered after school, evenings, summer breaks, and school vacations.

Organization Type: For Profit

Age range: 6+.

Cost range: Admission is \$12.95 for 12 & under and \$18.95 for 13+.

422 North Main Street
Manchester, Connecticut 06042
www.soarinindoors.com
(860) 645-1595



St. James School

Faith-Based, Academics, Sports & Recreation, Arts & Culture, Positive Youth Development

Saint James School is an award winning Catholic school serving students in Pre-K through 8th Grade from over 15 towns in the greater Manchester area. We offer before school care and after school care as well as numerous extracurricular programs for students who attend the school. Programs are offered before school and after school.

Organization Type: Faith-Based

Age range: For our "after school" and "before school" program, age 4 to 8th grade.

Cost range: Varies.

73 Park Street

Manchester, Connecticut 06040

www.saintjamesschool.net

(860) 643-5088

St. Mary's Episcopal Church

Faith-Based, Arts & Culture, Positive Youth Development

St. Mary's is a Christian community in the Episcopal (Anglican) tradition which provides religious formation programs for age 3 - Adult, including musical training. Programs are offered after school, evenings, and weekends.

Organization Type: Faith-Based

Age range: 3 to adult.

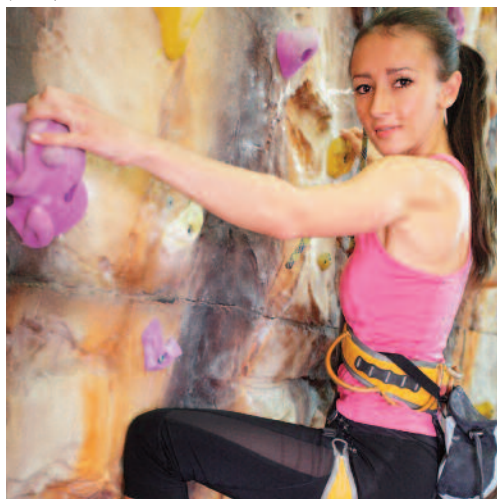
Cost range: Free to \$190.

41 Park Street

Manchester, Connecticut 06040

www.stmarysct.org

(860) 649-4583



Stone Age Rock Gym

Sports and Recreation

Indoor rock climbing – Boulder Climbs, Top Rope Climbs, Lead Climbs, Indoor Ice Climbs; Youth camps and climbing clubs. Call for more information. Programs are offered after school, evenings, summer breaks, and school vacations.

Organization Type: For Profit

195 Adams Street

Post Office Box 8362

Manchester, Connecticut 06042

www.StoneAgeRockGym.com

(860) 645-0015



Summit Studios

Arts & Culture

Summit Studios provides the highest level performing arts training and music and voice lessons to students of all ages, experience levels, and interests. Private instruction is offered in the following areas: vocal training, piano, guitar, woodwinds, brass, strings, and percussion. Programs are offered after school, evenings, weekends, summer breaks, and school vacation breaks.

Organization Type: For Profit.

Age range: 4 to adult

Cost range: \$10 per person per group session to \$50 per 60 minute private lesson.

421 Main Street

Manchester, Connecticut 06040

www.summitstudios.org

(860) 645-1502

The Children's Place, Inc.

Childcare, Preschool and Pre-Kindergarten Programs

Early Childhood Educational Facility serving children 6 weeks to 5 years of age.

Organization Type: For Profit

Age range: 6 weeks – 5 years.

Cost range: Call for more information.

452 Tolland Turnpike

Manchester, Connecticut 06042

www.thechildrensplaceinc.com

(860) 643-5535

The Werner Music Studio

Arts & Culture

Offering piano, organ, and voice lessons for children and adults.

60 Teresa Road

Manchester, Connecticut 06040

www.wernermusicstudio.com

(860) 643-8137

TimeMachine Hobby

STEM, Arts & Culture, Gaming

Our goal here at Time Machine Hobby is to provide activities that promote quality time with loved ones and friends. Constant learning, strategy development, and having fun, are present in all of our hobby activities. We support all of the hobbies represented, with active clubs, which meet weekly or monthly in our store. Programs are offered after school, evenings, weekends, summer breaks, and school vacations.

Organization Type: For Profit

71 Hilliard Street
Manchester, Connecticut 06042
www.timemachinehobby.com
(860) 646-0610

Trinity Covenant Church

Faith-Based

Trinity Covenant Church offers faith-based programs for children and youth that are open to everyone. Programs are offered after school, evenings, and summer breaks. Call for more information.

Organization Type: Faith-Based

302 Hackmatack Street
Manchester, Connecticut 06040
www.trinitycovenantchurch.org
(860) 649-2855

UConn 4-H Clubs

STEM, Health & Wellness, Positive Youth Development

The 4-H Program is run by Uconn Extension which provides a wide range of hands-on, STEM-based educational programs for youth ages 7 – 18. Programs are offered after school, evenings, and weekends. There are two 4-H clubs in Manchester:

Crackin' Whips

Focus area: Horse, Goats and Poultry
www.facebook.com/CrackinWhips4Hclub
(860) 798-4705

Westfield 4-H Kitchen Warriors

Focus area: Foods, Nutrition & Science

Organization Type: Nonprofit

Age range: 7–18.

Cost range: Free.

Hartford County 4H Extension Center
West Hartford Campus
University of Connecticut
1800 Asylum Avenue
West Hartford, Connecticut 06117
www.hartfordcounty4h.uconn.edu
(860) 570-9011



Verplanck Elementary School (21st Century at Verplank)

Academics, Sports & Recreation, Arts & Culture, Positive Youth Development, Childcare

An after school program subsidized by a federal grant that supplies certified teachers and tutors for an academic hour. A second hour involves specific enrichment activities. [Verplanck also offers an on-site Family Resource Center; see page 10. Also see MELC, page 16.]

Organization Type: Government

Age range: Grades K-5.

Cost range: \$40 registration fee + \$100-\$160 per year (for 2014-2015 school year)

126 Olcott Street
Manchester, Connecticut 06040
www.mpspride.org
(860) 647-3383

Waddell Elementary School (21st Century at Waddell)

Academics, Sports & Recreation, Arts & Culture, Positive Youth Development, Childcare

An after school program subsidized by a federal grant that supplies certified teachers and tutors for an academic hour. A second hour involves specific enrichment activities. [Waddell also offers an on-site Family Resource Center; see page 10. Also see MELC, page 16.]

Organization Type: Government

Age range: K - 5th

Cost range: \$40 registration fee + \$100 -\$160 per year (for 2014-2015 school year)

163 Broad Street
Manchester, Connecticut 06042
www.mpspride.org
(860) 647-3392





Washington Elementary School (21st Century at Washington)

Academics, Sports & Recreation, Arts & Culture, Positive Youth Development, Childcare

An after school program subsidized by a federal grant that supplies certified teachers and tutors for an academic hour. A second hour involves specific enrichment activities. Our program is located at Washington Elementary School and provides only for Washington students. Other schools in Manchester also have the same program. [Washington also offers an on-site Family Resource Center, page 10. Also see MELC, page 16.]

Organization Type: Government

Age range: Grades K-5.

Cost range: \$40 registration fee + \$100-\$160 per year (for 2014-2015 school year)

94 Cedar Street
Manchester, Connecticut 06040
www.mpspride.org
(860) 647-3332

Wee Care Day Care

Childcare, Academics, Arts & Culture

37 years of serving Manchester and surrounding communities meeting the individual needs of families for two generations. Programs offered before school, after school, summer breaks, and school vacations.

Organization Type: For Profit

Age range: 3 months to 12 years.

Cost range: From \$75.00 (Nursery School for three mornings) to \$225.00 (Infant/Toddler care).

726 North Main Street
Manchester, Connecticut 06042
www.weecaredaycare.biz
(860) 649-6167

White Tiger School of Taekwon-Do

Sports & Recreation, Positive Youth Development, Health & Wellness

White Tiger children's program is geared for children aged 4 years old to 11 years old who are ranked white belt and above. We recommend that children train 2 days a week, either Monday and Wednesday or Tuesday and Thursday. Programs are offered after school, evenings, summer breaks, and school vacations.

Organization Type: For Profit

Age range: 4-11.

Cost range: Call for more information.

135 Main Street
Manchester, Connecticut 06042
www.wt-tkd.com
(860) 432-2668

Young @ Art

Arts & Culture, Positive Youth Development, Open Mic, Mural Opportunities, Classes

Young @ Art provides an opportunity for young artists to develop life skills, creative thinking, respect and appreciation of community in a positive environment. We encourage each individual artist by offering them positive reinforcement, recognition, continued support, mentorship, and opportunities to grow and share their art. "To provide a neutral space where young creatives, of all cultures and abilities, can come together and create great art." Programs are offered after school, evenings, weekends, and summer breaks.

Organization Type: Nonprofit

Age range: 15-25.

Cost range: Free to \$60.

50 Purnell Place
Manchester, Connecticut 06040
www.youngatartct.org
(860) 454-7358



ADDITIONAL RESOURCES

More Information on Out-of-School Time

Better Manchester Magazine

Published three times a year by the Town of Manchester's Office of Neighborhoods and Families, *Better Manchester Magazine* is dedicated to building a bridge of communication among policy makers, providers, and the public. The entire Winter/Spring 2014 issue was devoted to Out-of-School Time. Also see the Summer 2014 issue for survey results from Manchester youth on a variety of behaviors, including how they spend their out-of-school hours. Complete archives available online.

<http://naf.townofmanchester.org>

Connecticut After School Network

A partnership of individuals and organizations dedicated to the vision that every Connecticut child and youth will have the opportunity to participate in high quality, affordable after school programs.

www.ctafterschoolnetwork.org

2-1-1 Childcare

Connecticut's free information and referral service provides referrals to out-of-school-time care. Just dial 2-1-1 or visit the website.

www.211ct.org

National League of Cities: Institute for Youth, Education, and Families

Works with cities and municipal leaders to help strengthen local efforts to create, expand, and improve upon afterschool opportunities and build coordinated city-wide afterschool systems.

www.nlc.org/institute-for-youth-education-and-families

The Wallace Foundation: Knowledge Center

National philanthropy providing a wealth of information and case studies on city-wide out-of-school-time systems, the importance of out-of-school learning, and the use of technology to strengthen and promote out-of-school-time programs.

www.wallacefoundation.org/knowledge-center

National Institute on Out-of-School Time

An action-research institute providing a national perspective on the critical issues facing the field of Out-of-School Time.

<http://niost.org>

Harvard Family Research Project: Out-of-School Time

Promotes quality, accessibility, and sustainability of out-of-school-time (OST) programs and activities across the nation.

www.hfrp.org/out-of-school-time

