

Waddell Elementary School



Monthly Status Report July 2017



Table of Contents

Section 1: Executive Summary

- Budget Summary
- Schedule Update
- 60 Day Look Ahead

Section 2: Timberline Cost Reports

- Budget Report
- Pending Revisions by COP

Section 3: Allowance Log

Section 4: Certified Payroll Log

Section 5: Submittal & RFI Log

Section 6: Progress Photos

July 31, 2017

WADDELL ELEMENTARY SCHOOL EXECUTIVE SUMMARY

Budget:

The total trade contracts approved to date are \$18,421,236.00. Revisions to the Contract and the Project Contingency are summarized below.

- **Original Contract: \$26,240,033.00**
- **Approved Change Orders: \$270,201.00**
- **Revised Contract: \$26,510,234.00**

- **Remaining Contingency: \$2,601,447.00 (To be revised once Heather returns)**

Schedule Update:

Building clean out has been completed by faculties. AAIS (demo) continues with interior selective demolition and abatement. They have completed selected areas coordinated with Downes and the MEP contractors so MEP coordination can progress. Richards (sitework) continues in the field with sitework preparation, excavations for remaining footings and misc. site demolition. They will be starting interior slab saw cutting for the installation of the new underground plumbing lines. MT Ford (concrete) continues to set rebar at footing and walls, pour formed footings and foundation walls.

60 Day Look Ahead

Activities for August 2017:

- MEP coordination completion of upper level A and B and new building upper and lower level
- Completion of main building demolition and abatement
- Completion of building excavations
- Completion of anchor bolt and rebar installations
- Completion of building foundation work
- Installation of new underground MEPs
- Continuation of masonry cleaning and appointing
- Pour slabs on grade within the footprint of the new buildings
- Continuing with exterior brick appointing and cleaning
- Formation of building mockups for review and approval by design team
- Start of MEP rough-ins at main building
- Start of interior framing
- Survey of anchor bolts locations

Activities for September 2017:

- MEP rough in at the upper level building A and B
- Installation of structural steel for new building
- Installation of metal decking at new building
- Continuation with interior framing within the existing building area lower and upper levels
- Start of exterior concrete flatwork

Critical Items:

- Completion of MEP coordination of existing building and new building
- Field measurements and color sample approval on windows and storefronts.

COST CODE	DESCRIPTION	VENDOR	ORIG BUDGET	BUDGET REVISIONS	REVISED BUDGET	CONTRACT AMOUNT	TOTAL CO #	APPROVED AMOUNT	REVISED CONTRACT	PENDING REVISION	ANTICIPATED FINAL
02-001	Site Work	Richards Corporation	1,692,862		1,692,862	1,692,862	1	11,969	1,704,831		1,704,831
02-075	Selective Demo & Abatement	AAIS, Corp.	658,614		658,614	658,614	2	55,838	714,452	6,375	720,827
02-476	Site Concrete	Costa & Sons, LLC	323,697		323,697	323,697			323,697		323,697
02-480	Landscaping	TC Landscaping	147,368		147,368	147,368			147,368		147,368
03-001	Concrete	M.T. Ford Industries, Inc.	645,000		645,000	645,000			645,000	4,546	649,546
04-001	Masonry Work	CT Mason Contractors, Inc.	917,000		917,000	917,000			917,000		917,000
05-101	Structural Steel	QSR Steel Corp.	714,400		714,400	714,400			714,400		714,400
05-500	Misc Metal Fabrications	General Welding & Fabrication	132,600		132,600	132,600			132,600		132,600
06-220	Millwork	Nova Wood Products, LTD	568,828		568,828	568,828			568,828		568,828
07-500	Roofing	The Imperial Company, Inc.	268,800		268,800	268,800			268,800		268,800
08-105	Doors, Frames & Hardware	OWI Contractors, LLC	283,400		283,400	283,400			283,400		283,400
08-750	Aluminum Windows/Glazing	Accurate Door & Window, LLC	1,530,600		1,530,600	1,530,600			1,530,600		1,530,600
09-250	Drywall	GDS Contracting Corp.	1,915,738		1,915,738	1,915,738			1,915,738		1,915,738
09-314	Tile	Barall & Konover Floors, Inc.	55,445		55,445	55,445			55,445		55,445
09-510	Acoustical Ceilings	Drywall Techniques, LLC	264,964		264,964	264,964			264,964		264,964
09-644	Flooring	Barall & Konover Floors, Inc.	424,422		424,422	424,422			424,422		424,422
09-900	Painting	Professional Painting, Inc.	143,200		143,200	143,200			143,200		143,200
10-001	Specialties	Sarazin General Contractors	391,000		391,000	391,000			391,000		391,000
11-400	Foodservice	Warehouse Store Fixture Co.	282,186		282,186	282,186			282,186	17,334	299,520
14-200	Elevator	Otis Elevator Company	85,600		85,600	85,600			85,600		85,600
15-001	Mechanical	Eastern Energy Services, LLC	3,843,000		3,843,000	3,843,000			3,843,000		3,843,000
15-400	Plumbing	Eastern Energy Services, LLC	767,100		767,100	767,100			767,100		767,100
15-500	Fire Suppression	HHS Mechanical Contractors	205,000		205,000	205,000			205,000	8,902	213,902
16-001	Electrical	Electrical Contractors, Inc.	1,947,000		1,947,000	1,947,000	1	202,394	2,149,394	12,323	2,161,717
16-900	Telecommunications	The Mercury Group	213,412		213,412	213,412			213,412		213,412
17-010	Arch/Eng Fees	Town of Manchester	1,600,000		1,600,000	1,600,000			1,600,000		1,600,000
17-011	A/E Reimbursables	Town of Manchester	20,000		20,000	20,000			20,000		20,000
17-013	Construction Management	Town of Manchester	25,000		25,000	25,000			25,000		25,000
17-019	Construction Manager	Town of Manchester	1,347,920		1,347,920	1,347,920			1,347,920		1,347,920
17-021	Environmental Monitoring	Town of Manchester	100,000		100,000	100,000			100,000		100,000
17-025	Testing/Inspections	Town of Manchester	60,000		60,000	60,000			60,000		60,000
17-026	Printing, Mailing, Advertising	Town of Manchester	10,000		10,000	10,000			10,000		10,000
17-030	Builder's Risk Insurance	Town of Manchester	50,000		50,000	50,000			50,000		50,000
17-031	Bonding Costs	Town of Manchester	10,000		10,000	10,000			10,000		10,000
17-035	Utilities	Town of Manchester	80,000		80,000	80,000			80,000		80,000
17-050	Commissioning	Town of Manchester	64,430		64,430	64,430			64,430		64,430
17-055	Movable Furniture	Town of Manchester	740,000		740,000	740,000			740,000		740,000
17-056	Moving Expenses, Storage	Town of Manchester	40,000		40,000	40,000			40,000		40,000
17-057	Technology Equipment	Town of Manchester	700,000		700,000	700,000			700,000		700,000
17-059	Telephone Instruments&Head End	Town of Manchester	70,000		70,000	70,000			70,000		70,000
17-061	Playground Equipment	Town of Manchester	300,000		300,000	300,000			300,000		300,000
70-001	Remaining Contingency	Town of Manchester	2,601,447		2,601,447	2,601,447			2,601,447		2,601,447
		JOB TOTAL	26,240,033	0	26,240,033	26,240,033		270,201	26,510,234	49,480	26,559,714

Waddell Allowance Log



	Package	Scope	Allowance #	Description	Orig. Amount	Expenditure	Balance Remaining
1	2.1	Demolition & Abatement	2.1A	Demolition/Life Safety Enabling for Classroom Relocations	\$ 20,000.00	\$ 20,000.00	\$ -
2	2.1	Demolition & Abatement	2.1B	Misc. Site Signage	\$ 2,500.00	\$ -	\$ 2,500.00
3	2.1	Demolition & Abatement	2.1C	Misc. Demolition	\$ 32,387.00	\$ -	\$ 32,387.00
4	3.1	CIP Concrete	3.1A	SOG Infill	\$ 17,000.00	\$ -	\$ 17,000.00
5	3.1	CIP Concrete	3.1B	SOD Infill	\$ 25,000.00	\$ -	\$ 25,000.00
6	4.1	Masonry	4.1A	Masonry Cutting & Patching	\$ 47,987.00	\$ -	\$ 47,987.00
6	4.1	Masonry	4.1B	Brick Reappointing	\$ 2,250.00	\$ -	\$ 2,250.00
7	5.1	Structural Steel	5.1A	Structural Steel	\$ 2,000.00	\$ -	\$ 2,000.00
8	5.1	Structural Steel	5.1B	Existing Building Roof and Elevated Slab Penetration Reinforcing and Infills	\$ 40,000.00	\$ -	\$ 40,000.00
9	9.1	Drywall/Gen. Trades	9.1A	100 Board Feet of Wood Blocking	\$ -	\$ -	\$ -
10	9.1	Drywall/Gen. Trades	9.1B	Safety	\$ 20,000.00	\$ -	\$ 20,000.00
11	9.1	Drywall/Gen. Trades	9.1C	Progress Cleaning	\$ 102,600.00	\$ -	\$ 102,600.00
12	9.1	Drywall/Gen. Trades	9.1D	Temporary Enclosures	\$ 20,000.00	\$ -	\$ 20,000.00
13	9.1	Drywall/Gen. Trades	9.1E	Temporary Doors	\$ 10,000.00	\$ -	\$ 10,000.00
14	9.1	Drywall/Gen. Trades	9.1F	Construction Waste Management & Disposal	\$ 50,000.00	\$ -	\$ 50,000.00
15	9.1	Drywall/Gen. Trades	9.1G	Temporary Toilets	\$ 18,000.00	\$ -	\$ 18,000.00
16	9.1	Drywall/Gen. Trades	9.1H	Misc. Carpentry	\$ 31,480.00	\$ -	\$ 31,480.00
17	9.1	Drywall/Gen. Trades	9.1I	Final Cleaning	\$ 24,000.00	\$ -	\$ 24,000.00
18	9.1	Drywall/Gen. Trades	9.1J	Temporary Signage	\$ 3,000.00	\$ -	\$ 3,000.00
19	9.1	Drywall/Gen. Trades	9.1K	Misc. Applied Fireproofing	\$ 5,000.00	\$ -	\$ 5,000.00
20	9.1	Drywall/Gen. Trades	9.1L	Temporary Partitions	\$ 20,000.00	\$ -	\$ 20,000.00
21	9.1	Drywall/Gen. Trades	9.1M	Existing Plaster Patching	\$ 25,000.00	\$ -	\$ 25,000.00
22	9.4	Acoustical Ceilings	9.4A	Acoustical Ceiling	\$ 11,500.00	\$ -	\$ 11,500.00
23	9.5	Flooring	9.5A	Moisture Mitigation - Resilient Tile	\$ 31,700.00	\$ -	\$ 31,700.00
24	9.5	Flooring	9.5B	Moisture Mitigation - Resinous Flooring	\$ 1,625.00	\$ -	\$ 1,625.00
25	9.6	Painting	9.6A	Painting	\$ 8,998.00	\$ -	\$ 8,998.00
26	14.1	Elevator	14.1A	Elevator Operator	\$ 12,800.00	\$ -	\$ 12,800.00
27	22.1	Plumbing	22.1A	Temporary Water	\$ 6,188.00	\$ -	\$ 6,188.00
28	22.1	Plumbing	22.1B	New Duplex Sump Pump	\$ 10,000.00	\$ -	\$ 10,000.00
29	23.1	HVAC	23.1A	Enironmental Controls (Temp Heating)	\$ 40,000.00	\$ -	\$ 40,000.00
30	26.1	Electrical	26.1A	Exit Signs	\$ 475.00	\$ -	\$ 475.00
31	26.1	Electrical	26.1B	10 Duplex Receptacles	\$ 1,125.00	\$ -	\$ 1,125.00
32	26.1	Electrical	26.1C	Temp Heat Equipment Power	\$ 10,000.00	\$ -	\$ 10,000.00
33	26.2	Telecommunications	26.2A	5 Data Drops	\$ 1,000.00	\$ -	\$ 1,000.00
34	31.1	Sitework	31.1A	Concrete SOG Demolition	\$ 10,000.00	\$ -	\$ 10,000.00
35	31.1	Sitework	31.1B	Site Grounds Maintenance and Winter Conditions	\$ 45,000.00	\$ -	\$ 45,000.00
36	31.1	Sitework	31.1C	Engineering	\$ 15,000.00	\$ 5,313.73	\$ 9,686.27
37	31.1	Sitework	31.1D	Temporary Fence Maintenance	\$ 10,000.00	\$ -	\$ 10,000.00
38	31.1	Sitework	31.1E	Winter Conditions and Snow Removal	\$ 20,000.00	\$ -	\$ 20,000.00
39	31.1	Sitework	31.1F	Site Signage	\$ 7,500.00	\$ -	\$ 7,500.00
				Total	\$761,115.00	\$25,313.73	\$ 735,801.27

Total Allowances	\$761,115.00
All Allowances	\$761,115.00
% Expended	3.33%
Balance All Allowances	\$735,801.27

EEO CERTIFIED PAYROLL F

Project : **Waddell Elementary**

Construction Manager : Downes Construction

Prime Contractors	Sub Contractors	Sub Sub Contractors	CP #	Week Ending	Total Hrs	Supt/Foremen Hrs	Total Hrs Minus(-) Supt/Frm
AAIS Corporation			1	3/9/17	16.00	0.00	16.00
AAIS Corporation			2	3/16/17	0.00	0.00	0.00
AAIS Corporation			3	3/23/17	72.00	0.00	72.00
AAIS Corporation			4	3/30/17	8.00	0.00	8.00
AAIS Corporation			5	4/6/17	0.00	0.00	0.00
AAIS Corporation			6	4/13/17	80.00	0.00	80.00
AAIS Corporation			7	4/20/17	120.50	0.00	120.50
AAIS Corporation			8	4/27/17	128.00	0.00	128.00
AAIS Corporation			9	5/4/17	189.50	0.00	189.50
AAIS Corporation			10	5/11/17	209.50	0.00	209.50
AAIS Corporation			11	5/18/17	114.00	0.00	114.00
AAIS Corporation			12	5/25/17	10.00	0.00	10.00
AAIS Corporation			13	6/1/17	9.50	0.00	9.50
AAIS Corporation			14	6/8/17	0.00	0.00	0.00
AAIS Corporation			15	6/15/17	16.00	0.00	16.00
AAIS Corporation			16	6/22/17	16.00	0.00	16.00
AAIS Corporation			17	6/29/17	189.00	0.00	189.00
AAIS Corporation			18	7/6/17	24.00	0.00	24.00
AAIS Corporation	Total :				1,202.00	0.00	1,202.00
Electrical			1	5/20/17	6.00	0.00	6.00
Electrical			2	5/27/17	0.00	0.00	0.00
Electrical			3	6/3/17	6.50	0.00	6.50
Electrical			4	6/10/17	40.00	0.00	40.00
Electrical			5	6/17/17	40.00	0.00	40.00
Electrical			6	6/24/17	40.00	0.00	40.00
Electrical			7	7/1/17	40.00	0.00	40.00
Electrical			8	7/8/17	32.00	0.00	32.00
Electrical Contractors, Inc.	Total :				204.50	0.00	204.50
Richards			1	6/3/17	98.00	0.00	98.00
Richards			2	6/10/17	83.00	0.00	83.00
Richards			3	6/17/17	125.00	0.00	125.00
Richards			4	6/24/17	23.00	0.00	23.00
Richards			5	7/1/17	160.00	0.00	160.00
Richards			6	7/8/17	124.00	0.00	124.00
Richards			7	7/15/17	152.00	0.00	152.00
Richards Corporation	Total :				765.00	0.00	765.00
MT Ford			1	6/10/17	8.50	0.00	8.50
MT Ford			2	6/17/17	22.00	0.00	22.00
MT Ford			3	6/24/17	110.50	0.00	110.50

MT Ford	4	7/1/17	152.00	0.00	152.00
MT Ford	5	7/8/17	107.00	0.00	107.00
MT Ford	6	7/15/17	236.00	0.00	236.00
MT Ford Industries, Inc.			636.00	0.00	636.00
Eastern Energy	1	4/15/17	16.00	0.00	16.00
Eastern Energy	2	4/22/17	8.00	0.00	8.00
Eastern Energy	3	4/29/17	0.00	0.00	0.00
Eastern Energy	4	5/6/17	0.00	0.00	0.00
Eastern Energy	5	5/13/17	0.00	0.00	0.00
Eastern Energy	6	5/20/17	0.00	0.00	0.00
Eastern Energy	7	5/27/17	0.00	0.00	0.00
Eastern Energy	8	6/3/17	0.00	0.00	0.00
Eastern Energy	9	6/10/17	0.00	0.00	0.00
Eastern Energy	10	6/17/17	0.00	0.00	0.00
Eastern Energy	11	6/24/17	0.00	0.00	0.00
Eastern Energy	12	7/1/17	0.00	0.00	0.00
Eastern Energy	13	7/8/17	0.00	0.00	0.00
Eastern Energy	14	7/15/17	46.00	0.00	46.00
Eastern Energy Services, LLC			70.00	0.00	70.00
HHS Mechanical	1	7/8/17	8.00	0.00	8.00
HHS Mechanical Contractors, Inc.			8.00	0.00	8.00

Grand Totals :			2,885.50	0.00	2,885.50
-----------------------	--	--	-----------------	-------------	-----------------

Cross
Check :

REPORT

Prepared By : Brad Anderson

Period Ending : 7/31/2017

Requirements

Minority Hrs	Female Hrs	Apprentice Hrs	Resident Hrs	Minority	Female	Apprentice	Residence
16.00	0.00	0.00	0.00	100.00%	0.00%	0.00%	0.00%
0.00	0.00	0.00	0.00	0.00%	0.00%	0.00%	0.00%
64.00	0.00	0.00	0.00	88.89%	0.00%	0.00%	0.00%
8.00	0.00	0.00	0.00	100.00%	0.00%	0.00%	0.00%
0.00	0.00	0.00	0.00	0.00%	0.00%	0.00%	0.00%
48.00	0.00	0.00	0.00	60.00%	0.00%	0.00%	0.00%
88.50	0.00	0.00	0.00	73.44%	0.00%	0.00%	0.00%
112.00	0.00	0.00	0.00	87.50%	0.00%	0.00%	0.00%
129.50	0.00	0.00	0.00	68.34%	0.00%	0.00%	0.00%
138.50	0.00	0.00	0.00	66.11%	0.00%	0.00%	0.00%
106.00	0.00	0.00	0.00	92.98%	0.00%	0.00%	0.00%
8.00	0.00	0.00	0.00	80.00%	0.00%	0.00%	0.00%
9.50	0.00	0.00	0.00	100.00%	0.00%	0.00%	0.00%
0.00	0.00	0.00	0.00	0.00%	0.00%	0.00%	0.00%
0.00	0.00	0.00	0.00	0.00%	0.00%	0.00%	0.00%
8.00	0.00	0.00	0.00	50.00%	0.00%	0.00%	0.00%
128.00	0.00	0.00	0.00	67.72%	0.00%	0.00%	0.00%
16.00	0.00	0.00	0.00	66.67%	0.00%	0.00%	0.00%
880.00	0.00	0.00	0.00	73.21%	0.00%	0.00%	0.00%
0.00	0.00	0.00	0.00	0.00%	0.00%	0.00%	0.00%
0.00	0.00	0.00	0.00	0.00%	0.00%	0.00%	0.00%
0.00	0.00	0.00	0.00	0.00%	0.00%	0.00%	0.00%
0.00	0.00	0.00	0.00	0.00%	0.00%	0.00%	0.00%
0.00	0.00	0.00	0.00	0.00%	0.00%	0.00%	0.00%
0.00	0.00	0.00	0.00	0.00%	0.00%	0.00%	0.00%
0.00	0.00	0.00	0.00	0.00%	0.00%	0.00%	0.00%
0.00	0.00	0.00	0.00	0.00%	0.00%	0.00%	0.00%
0.00	0.00	0.00	0.00	0.00%	0.00%	0.00%	0.00%
0.00	0.00	0.00	0.00	0.00%	0.00%	0.00%	0.00%
0.00	0.00	0.00	0.00	0.00%	0.00%	0.00%	0.00%
0.00	0.00	0.00	0.00	0.00%	0.00%	0.00%	0.00%
0.00	0.00	0.00	0.00	0.00%	0.00%	0.00%	0.00%
0.00	0.00	0.00	0.00	0.00%	0.00%	0.00%	0.00%
0.00	0.00	0.00	0.00	0.00%	0.00%	0.00%	0.00%
0.00	0.00	0.00	0.00	0.00%	0.00%	0.00%	0.00%
0.00	0.00	0.00	0.00	0.00%	0.00%	0.00%	0.00%
0.00	0.00	0.00	0.00	0.00%	0.00%	0.00%	0.00%
0.00	0.00	0.00	0.00	0.00%	0.00%	0.00%	0.00%
0.00	0.00	0.00	0.00	0.00%	0.00%	0.00%	0.00%
0.00	0.00	0.00	0.00	0.00%	0.00%	0.00%	0.00%

0.00	0.00	0.00	0.00	0.00%	0.00%	0.00%	0.00%
6.50	0.00	0.00	0.00	6.07%	0.00%	0.00%	0.00%
41.50	0.00	0.00	0.00	17.58%	0.00%	0.00%	0.00%
48.00	0.00	0.00	0.00	7.55%	0.00%	0.00%	0.00%
8.00	0.00	0.00	0.00	50.00%	0.00%	0.00%	0.00%
4.00	0.00	0.00	0.00	50.00%	0.00%	0.00%	0.00%
0.00	0.00	0.00	0.00	0.00%	0.00%	0.00%	0.00%
0.00	0.00	0.00	0.00	0.00%	0.00%	0.00%	0.00%
0.00	0.00	0.00	0.00	0.00%	0.00%	0.00%	0.00%
0.00	0.00	0.00	0.00	0.00%	0.00%	0.00%	0.00%
0.00	0.00	0.00	0.00	0.00%	0.00%	0.00%	0.00%
0.00	0.00	0.00	0.00	0.00%	0.00%	0.00%	0.00%
0.00	0.00	0.00	0.00	0.00%	0.00%	0.00%	0.00%
0.00	0.00	0.00	0.00	0.00%	0.00%	0.00%	0.00%
0.00	0.00	0.00	0.00	0.00%	0.00%	0.00%	0.00%
0.00	0.00	0.00	0.00	0.00%	0.00%	0.00%	0.00%
0.00	0.00	0.00	0.00	0.00%	0.00%	0.00%	0.00%
0.00	0.00	0.00	0.00	0.00%	0.00%	0.00%	0.00%
0.00	0.00	0.00	0.00	0.00%	0.00%	0.00%	0.00%
0.00	0.00	0.00	0.00	0.00%	0.00%	0.00%	0.00%
12.00	0.00	0.00	0.00	17.14%	0.00%	0.00%	0.00%
0.00	0.00	0.00	0.00	0.00%	0.00%	0.00%	0.00%
0.00	0.00	0.00	0.00	0.00%	0.00%	0.00%	0.00%
940.00	0.00	0.00	0.00	32.58%	0.00%	0.00%	0.00%

Outstanding Submittal Log
Waddell Elementary- Manchester
Downes Construction Company, LLC

Date: 8/2/2017

Page: 1 of 7

Package	Submittal Number	Rev.	Title	Status	Latest Dates				Ball in Court
					Received	Sent	Returned	Forwarded	
-1	-1	0							
02 41	02 41 19-06 0		Lift on Eelevated Slab Calculations		7/24/17	7/24/17			Mike Plickys
03 20	03 20 00-02 0		Concrete Brick for Reinforcing Materials		6/14/17	6/14/17			Macchi Engineers, LLC
03 30	03 30 00-11 0		Concrete Admixtures						Macchi Engineers, LLC
04 20	04 20 00-22 0		Mortar Samples	R&R	6/14/17	6/14/17	7/7/17	7/10/17	CT Mason Contractors, Inc
04 20	04 20 00-26 0		Air Vapor Barrier Shop Drawing Details	R&R	6/23/17	6/23/17	7/7/17	7/10/17	CT Mason Contractors, Inc
04 20	04 20 00-25 0		Brick Shapes		8/2/17	8/2/17			Joon Baek
04 72	04 72 00-02 0		Precast Stone Shop Drawings						Joon Baek
04 72	04 72 00-03 0		CTHPB Data						Joon Baek
05 12	05 12 00-04 0		Structural Steel Erection Plans - E2	R&R	5/18/17	5/22/17	6/18/17	6/18/17	QSR Steel Corp
05 12	05 12 00-14 1		Structural Steel Calculations		7/31/17	7/31/17			Macchi Engineers, LLC
05 12	05 12 00-15 0		Structural Steel Primer						Macchi Engineers, LLC
05 12	05 12 00-16 0		CTHPB Primer Data						Macchi Engineers, LLC
05 12	05 12 00-17 0		Structural Steel Shop Drawings		7/24/17	7/24/17			Mike Plickys
05 40	05 40 00-1 0		Cold Formed Metal Framing Shop Drawings & Calcs.		7/31/17	7/31/17			Mike Plickys
05 51	05 51 10-01 0		Ramp 3 Rail Shop Drawings - ME	R&R	6/8/17	6/13/17	6/13/17	6/13/17	General Welding & Fabrication
05 75	05 75 00-1 0		Airolite Sunshade Shop Drawings		7/26/17	7/26/17			Joon Baek
05 75	05 75 00-2 0		Airolite Sunshade Color Selection Chart		7/26/17	7/26/17			Joon Baek
06 16	06 16 00-1 0		Roof Rough Carpenty Product Data	R&R	7/17/17	7/17/17	7/26/17	7/26/17	Bruce M. Raulukaitis
068 6	068 62 00-1 0		Unit Skylights Product Data and Shops		7/17/17	7/17/17			Joon Baek

Outstanding Submittal Log
Waddell Elementary- Manchester
Downes Construction Company, LLC

Date: 8/2/2017

Page: 2 of 7

Package	Submittal Number	Rev.	Title	Status	Latest Dates				Ball in Court
					Received	Sent	Returned	Forwarded	
07 21	07 21 00-02 0		2" Rigid Insulation (Concrete SOW)						Joon Baek
07 21	07 21 00-03 0		Foil Faced PolyIso Insulation						Joon Baek
07 27	07 27 26-07 0		Fluid Applied AVB Shop Drawings						Joon Baek
07 84	07 84 46-01 0		Spray On Fireproofing Product Data		8/1/17	8/1/17			Joon Baek
07 92	07 92 00-02 0		Joint Sealant Product Data		8/1/17	8/1/17			Joon Baek
07 92	07 92 00-03 0		Silicone		8/2/17	8/2/17			Joon Baek
07 92	07 92 00-04 0		Backer Rod		8/2/17	8/2/17			Joon Baek
08 62	08 62 00-1 0		Unit Skylights Product Data and Shops	R&R	7/17/17	7/17/17	7/28/17	7/28/17	Bruce M. Raulukaitis
08 80	08 80 00-02 0		Glass Spandrel Color Chart		6/5/17	6/5/17			Tai Soo Kim Partners
08 80	08 80 00-03 0		GL-1 Glass Sample		7/20/17	7/20/17			Joon Baek
08 80	08 80 00-04 0		GL-2 Glass Sample		7/20/17	7/20/17			Joon Baek
08 80	08 80 00-05 0		GL-4 Glass Sample		7/20/17	7/20/17			Joon Baek
10 21	10 21 13-1 0		Toilet Partitions		7/17/17	7/17/17			Joon Baek
10 21	10 21 13-2 0		Toilet Partitions LEED		7/17/17	7/17/17			Joon Baek
10 28	10 28 00-1 0		Toilet Accessories		7/17/17	7/17/17			Joon Baek
10 51	10 51 13-1 0		Lockers		7/17/17	7/17/17			Joon Baek
11 31	11 31 00-01 0		Food Service Equipment - Freezer Shop Drawings		6/14/17	6/21/17			Bemis Associates LLC
11 31	11 31 00-02 0		Residentail Equipment		7/27/17	7/27/17			Joon Baek
11 68	11 68 01-1 0		Play Equipment-Slide		7/27/17	7/27/17			Joon Baek
21 00	21 00 00-01 0		Fire Suppression System - Shop Drawings & hydraulic Calculations		6/14/17	6/14/17			Bemis Associates LLC

Outstanding Submittal Log
Waddell Elementary- Manchester
Downes Construction Company, LLC

Date: 8/2/2017

Page: 3 of 7

Package	Submittal Number	Rev.	Title	Status	Latest Dates				Ball in Court
					Received	Sent	Returned	Forwarded	
21 05	21 05 00-29 0		Area Control Manifold						Bemis Associates LLC
21 05	21 05 00-30 0		Wet Sprinkler System Alarm						Bemis Associates LLC
21 05	21 05 00-31 0		Tags, Charts, Labels for Fire Suppression System						Bemis Associates LLC
22 00	22 00 00-01 0		Plumbing Coordinated Shop Drawings						Bemis Associates LLC
22 05	22 05 00-05 0		Pressure Reducing Valves		5/3/17	5/3/17			Bemis Associates LLC
22 05	22 05 00-07 0		Plumbing Fixtures & Carriers Product Data		5/3/17	5/3/17			Bemis Associates LLC
22 05	22 05 00-12 0		Recirculating Pump		5/10/17	5/24/17			Bemis Associates LLC
22 05	22 05 00-14 0		Plumbing Pipes & Fitting		5/10/17	5/24/17			Bemis Associates LLC
22 05	22 05 00-17 0		Gas Fired Water Heater		5/12/17	5/24/17			Bemis Associates LLC
22 05	22 05 00-18 0		Thermal Expansion Absorber		5/12/17	5/24/17			Bemis Associates LLC
22 05	22 05 00-19 0		Trap Primers						Bemis Associates LLC
22 05	22 05 00-20 0		Plumbing Identification						Bemis Associates LLC
22 05	22 05 00-21 0		Heat Trace Pipelines		6/15/17	6/15/17			Bemis Associates LLC
22 05	22 05 48-01 0		Plumbing Vibration & Seismic V-Loops		5/16/17	5/24/17			Bemis Associates LLC
22 07	22 07 00-01 0		Plumbing Insulation		5/9/17	5/24/17			Bemis Associates LLC
22 07	22 07 00-02 0		Underground Heat Traced Grease Waste Piping Insulation		6/6/17	6/13/17			Bemis Associates LLC
23 00	23 00 00-03 0		Variable Frequency Drives		5/3/17	5/3/17			Bemis Associates LLC
23 00	23 00 00-04 0		HVAC Coordinated Shop Drawings						Bemis Associates LLC
23 00	23 00 00-05 0		Cabinet Unit Heater Color Selection Chart		7/20/17	7/20/17			Joon Baek
23 05	23 05 48-01 0		Vibration & Seismic Controls for HVAC - Data						Joon Baek

Outstanding Submittal Log
Waddell Elementary- Manchester
Downes Construction Company, LLC

Date: 8/2/2017

Page: 4 of 7

Package	Submittal Number	Rev.	Title	Status	Latest Dates				Ball in Court
					Received	Sent	Returned	Forwarded	
23 05	23 05 48-02 0		Vibration & Seismic Controls - Shop Drawings						Joon Baek
23 05	23 05 48-03 0		Spring Curbs for RTUs: AHU-1, AHU-3 and ERU 1-4		6/27/17	6/27/17			Bemis Associates LLC
23 05	23 05 93-01 0		Testing, Adjusting, Balancing Records						Bemis Associates LLC
23 09	23 09 13-01 0		Instrumentation & Controls for HVAC		5/12/17	5/22/17			Bemis Associates LLC
23 21	23 21 13-02 0		Fin Tube Radiation Product Data		5/3/17	5/3/17			Bemis Associates LLC
23 21	23 21 13-14 1		Electric Wall Heater		7/11/17	7/11/17			Bemis Associates LLC
23 21	23 21 13-15 0		Heat Exchanger		5/9/17	5/25/17			Bemis Associates LLC
23 31	23 31 13-02 0		Roof Exhaust Fans		5/3/17	5/3/17			Bemis Associates LLC
23 31	23 31 13-03 0		Sould Silencers		5/3/17	5/3/17			Bemis Associates LLC
23 31	23 31 13-04 0		Registers, Grilles, and Diffusers		5/3/17	5/3/17			Bemis Associates LLC
23 31	23 31 13-05 0		Outside Wall Louvers		5/3/17	5/3/17			Bemis Associates LLC
23 31	23 31 13-14 0		Vibration Isolators						Bemis Associates LLC
23 31	23 31 14-01 0		Breeching, Chimney & Stacks for Condensing Appliances		5/3/17	5/3/17			Bemis Associates LLC
23 36	23 36 13-01 0		Chilled Beams		4/11/17	4/11/17			Bemis Associates LLC
23 52	23 52 16-02 0		Boiler Room Layout Drawing		7/19/17	7/19/17			Bemis Associates LLC
23 64	23 64 14-01 0		Displacement/Induction Units		4/11/17	4/11/17			Bemis Associates LLC
23 72	23 72 00-01 1		Air to Air Energy Recovery Equipment		6/29/17	7/5/17			Bemis Associates LLC
26 00	26 00 00-01 0		Electrical Coordinated Shop Drawings						Bemis Associates LLC
26 00	26 00 00-02 0		Demand Meters - E3.01		6/26/17	6/26/17			Bemis Associates LLC
26 05	26 05 00-03 0		Safety Switches						Bemis Associates LLC

Outstanding Submittal Log
Waddell Elementary- Manchester
Downes Construction Company, LLC

Date: 8/2/2017

Page: 5 of 7

Package	Submittal Number	Rev.	Title	Status	Latest Dates				Ball in Court
					Received	Sent	Returned	Forwarded	
26 05	26 05 00-05 0		Motor Starter/Disconnects and VFD's						Bemis Associates LLC
26 05	26 05 00-08 0		Fuses						Bemis Associates LLC
26 05	26 05 00-13 0		Television/CATV Service Conduits						Bemis Associates LLC
26 05	26 05 00-14 0		Access Panels						Bemis Associates LLC
26 05	26 05 48-01 0		Vibration & Seismic Restraint Product Data						Bemis Associates LLC
26 05	26 05 48-02 0		Vibration & Seismic Control Shop Drawings						Bemis Associates LLC
26 09	26 09 36-01 0		Multi-Room Lighting Controller						Bemis Associates LLC
26 09	26 09 36-02 0		Central Signal Processor for Modular Dimming Controls						Bemis Associates LLC
26 09	26 09 36-03 0		Modular Dimming Controls System Accessories						Bemis Associates LLC
26 09	26 09 36-04 0		Modular Dimming Controls Conductors and Cabling						Bemis Associates LLC
26 09	26 09 36-05 0		Modular Dimming Controls Wiring Schematics						Bemis Associates LLC
26 09	26 09 43-01 0		Dimming System						Bemis Associates LLC
26 09	26 09 43-02 0		Switching Systems						Bemis Associates LLC
26 09	26 09 43-03 0		Digital-Network Lighting Accessories						Bemis Associates LLC
26 09	26 09 43-04 0		Automation Control Processors						Bemis Associates LLC
26 09	26 09 43-05 0		Control Processor Type-1						Bemis Associates LLC
26 09	26 09 43-06 0		Digital Network Lighting Controls Keypad						Bemis Associates LLC
26 09	26 09 43-07 0		Lighting Controls Sensors						Bemis Associates LLC
26 20	26 20 00-02 1		Switchboard	Rejected	7/19/17	7/19/17	7/31/17	7/31/17	Electrical Contractors, Inc
26 20	26 20 00-03 0		Panelboards	R&R	6/30/17	7/5/17	7/11/17	7/12/17	Electrical Contractors, Inc

Outstanding Submittal Log
Waddell Elementary- Manchester
Downes Construction Company, LLC

Date: 8/2/2017

Page: 6 of 7

Package	Submittal Number	Rev.	Title	Status	Latest Dates				Ball in Court
					Received	Sent	Returned	Forwarded	
26 20	26 20 00-06 0		Combination Starters						Bemis Associates LLC
26 20	26 20 00-07 0		Fractional Horsepower Starters						Bemis Associates LLC
26 20	26 20 00-08 0		BackBoards						Bemis Associates LLC
26 20	26 20 00-09 0		Telephone and Cable TV Service						Bemis Associates LLC
26 20	26 20 00-10 0		Dry-Type Transformers						Bemis Associates LLC
26 30	26 30 00-01 0		Portable Generator		6/26/17	6/26/17			Bemis Associates LLC
26 31	26 31 00-01 0		Photovoltaic Collectors						Bemis Associates LLC
26 50	26 50 00-01 0		Lamps						Bemis Associates LLC
26 50	26 50 00-02 0		LED Drivers						Bemis Associates LLC
26 50	26 50 00-03 0		List of Acceptable Light Fixture Manufacturers						Bemis Associates LLC
26 50	26 50 00-05 0		Exit Signs						Bemis Associates LLC
26 50	26 50 00-06 0		Emergency Lighting Inverters						Bemis Associates LLC
31 00	31 00 00-01 0		Light Pole Base Shop Drawing		6/22/17	6/26/17			Milone & MacBroom, Inc
31 20	31 20 00-06 1		Controlled Fill		6/30/17	7/5/17			Milone & MacBroom, Inc
31 20	31 20 00-09 1		Ordinary Fill - Material from Site		6/30/17	7/5/17			Macchi Engineers, LLC
31 20	31 20 00-13 0		Base Course		7/31/17	7/31/17			Darin Overton
31 20	31 20 00-14 0		Subbase Course (Onsite)		7/31/17	7/31/17			Darin Overton
32 12	32 12 16-1 0				7/31/17	7/31/17			Darin Overton
32 13	32 13 13-02 0		Dowels for Concrete Sidewalk Joints	Return as corr	6/29/17	7/10/17	7/17/17	7/17/17	Costa & Son, LLC
32 13	32 13 13-07 0		Concrete Mix - Class F	R&R	6/29/17	7/10/17	7/17/17	7/17/17	Costa & Son, LLC

Outstanding Submittal Log
Waddell Elementary- Manchester
Downes Construction Company, LLC

Date: 8/2/2017

Page: 7 of 7

Package	Submittal Number	Rev.	Title	Status	Latest Dates				Ball in Court
					Received	Sent	Returned	Forwarded	
32 13	32 13 30-01 0		Colored Admixture for Concrete		6/30/17	7/10/17			Tai Soo Kim Partners

Outstanding Requests for Information
Waddell Elementary- Manchester

Downes Construction Company, LLC

Date: 8/2/2017

Page: 1 of 3

Number	Status	Title	Dated	Returned	Required
012	Open	Existing Sewer Main	6/21/17		
	From	Richards Corporation			
	To	Tai Soo Kim Partners			

Request:

In regards to the existing sewer main that runs below the new building location:

1. Sheet C2.01 calls out "cut and cap portion of sewer main to be removed once relocated sewer main is in place"
2. Specification section 311000 which includes "Disconnecting and capping or sealing site utilities" states within section 3.4 to "locate, identify, disconnect, and seal or cap off utilities indicated to be removed"
3. The pipe is 5 to 6 feet below the new bottom of footing elevation

Would the engineer please specify if any work other than capping this line is required, such as filling which was briefly discussed through a phone call with the structural engineer.

Answer:

016	Open	Use of Existing Structure Proposal	6/26/17		
	From	Electrical Contractors, Inc.			
	To	Tai Soo Kim Partners			

Request:

There is an existing tunnel in the existing building that we would like to utilize to run feeder conduits from the boiler room to the following panels:
ELP1, 1DP1, GDP3, GELP1, KP1, KEP1, GDP2, UPS-P2, Elevator, and PV combiner. Utilizing the existing tunnel will ease congestion in the overhead coordination for feeders.

Please advise.

Answer:

018	Open	ERU-4 Coordination Conflict	7/5/17		7/15/17
	From	Eastern Energy Services, LLC			
	To	Tai Soo Kim Partners			

Request:

Attached, please find a snapshot of the current coordination conflicts that need to be resolved at the area below ERU-4. As it is shown, Mechanical Piping chilled beams, lighting and windows are also impacted. Please advise as to how we should coordinate.

Answer:

019	Open	HVAC Chilled Water	7/5/17		7/15/17
	From	Eastern Energy Services, LLC			
	To	Tai Soo Kim Partners			

Request:

Please confirm pipe sizes for the 58 degree CHWS & CHWR piping.

Reference drawings:
HP1.01A - 3" supply and return down corridor 100E and the CHWR inside custodial 122. HP1.01B Classrooms 124, 130 and Corridor 100F.
HP102A pipe chase outside classroom 213 and Closet 207.

Answer:

Outstanding Requests for Information
Waddell Elementary- Manchester

Downes Construction Company, LLC

Date: 8/2/2017

Page: 2 of 3

Number	Status	Title	Dated	Returned	Required
020	Open	Existing Drainage System	7/6/17		7/16/17
	From	Downes Construction Co., LLC			
	To	Tai Soo Kim Partners			

Request:

During field excavation, the existing drain for the current school drainage system has been located by the Door 100D at the Sotuh West corner of Building A. It has been previously abandoned.

Answer:

Please advise as to how this discovery should be handled - should this be left abandoned or tied into the roof leaders?

024	Open	Floor Box Specification Clarification	7/18/17		7/28/17
	From	Anthony Mossa			
	To	Lucian Dragulski			

Request:

Drawing E0.00 describes floor box types FB-A, FB-B and FB-C. spec. section 260500-2 .09F calls for boxes to be Omnibox 880S floor box series. Drawing IT0.01 calls for one 1-1/4" stub up to the floor box. The specified floor box will not accept this size conduit. See attached and confirm on how to proceed.

Answer:

025	Open	Underground Sanitary Clarification	7/25/17	7/26/17	8/4/17
	From	Anthony Mossa			
	To	Lucian Dragulski			

Request:

Reference Plumbing Dwg A3 underground piping for new bathroom group. The existing 4" sanitary line is approximately -10" to the centerline of pipe from top of slab. This approximation is a best guess derived from centerline measurements of existing piping in tunnel (see pictures). Without an exploratory test hole to verify exact invert, we are unable to determine if existing invert in combination with the new fittings required will work. -10" as it seems to be WILL NOT work with SV CI fittings. The fittings will be out of the slab creating height issues with the new carriers. Please advise.

Answer:

The invert elevation for the pipes located in the tunnel is not the same as the invert for the pipe located in the unexcavated area. The sanitary/waste pipe originates in the sprinkler room, on the North side of the building. There should be enough pitch at the point of connection. Construction documents call for the contractor to sawcut the slab and to patch to match the slab area where the new san/waste pipes are to be installed. Additional exploratory cuts are not required.

STATUS: CLOSED

To: Eastern, Richards
cc: Field, File

027	Open	Existing Wiring to Remain-Lower Lvel Ligt	7/31/17		8/10/17
	From	Anthony Mossa			
	To	Lucian Dragulski			

Request:

Please review attached photos of existing wiring in the lower level area shown on the drawings to remain. These wires are cloth covered and very fragile also there is no ground wire in the conduits. Please have the engineer review and confirm if we should be using these wires or if they should be replaced.

Answer:

028	Open	Diamond Detail Clarification	8/1/17		8/11/17
-----	------	------------------------------	--------	--	---------

Outstanding Requests for Information
Waddell Elementary- Manchester

Downes Construction Company, LLC

Date: 8/2/2017

Page: 3 of 3

Number	Status	Title	Dated	Returned	Required
	From	Anthony Mossa			
	To	Mike Plickys			

Request:

Drawings do not offer a Typical Diamond Detail.
Please advise if the attached detail is acceptable.

Answer:

PROGRESS PHOTOS



Richards (sitework) continuing with site demolitions and excavations.



Richards (sitework) continues with new storm drainage and sewer.



MT Ford (concrete) poured footings and foundation walls. Richard (sitework) has backfilled once damproofing was installed.



More site drainage and sewer by Richard (stiework)



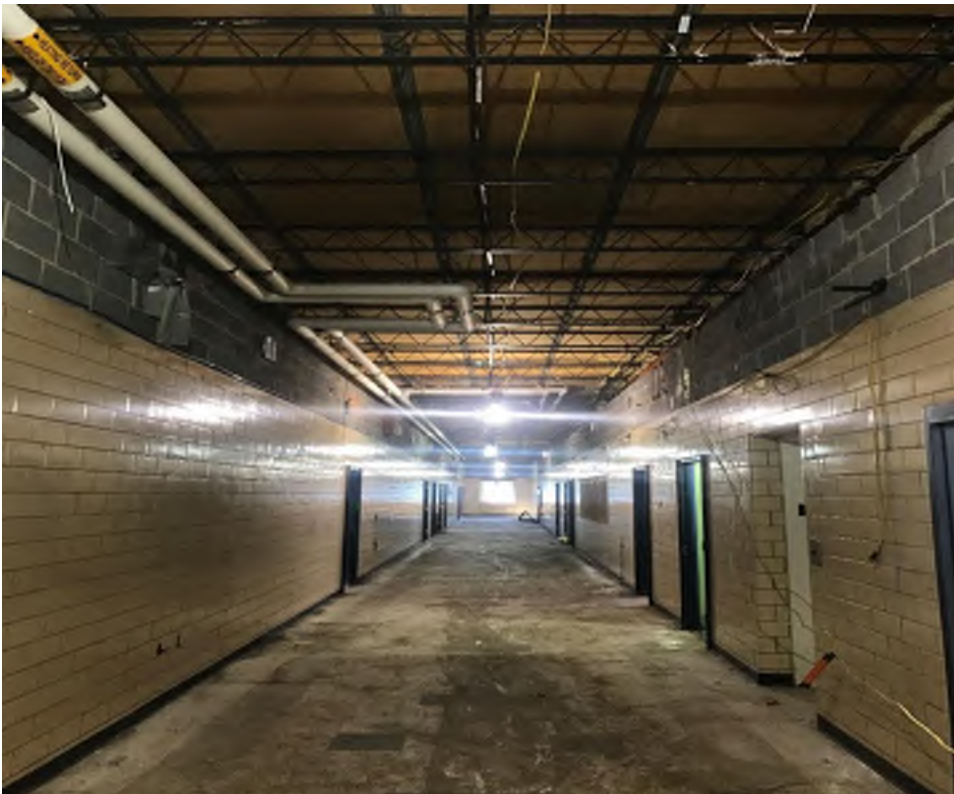
CT Mason (masonry) has started the brick cleaning and masonry reappointing.



AAIS (demo) has started selective demo and abatement within the building. Ceiling removal with the gym has been completed.



AAIS (demo) has started work in the existing classrooms.



AAIS (demo) showing corridor demolition progress.