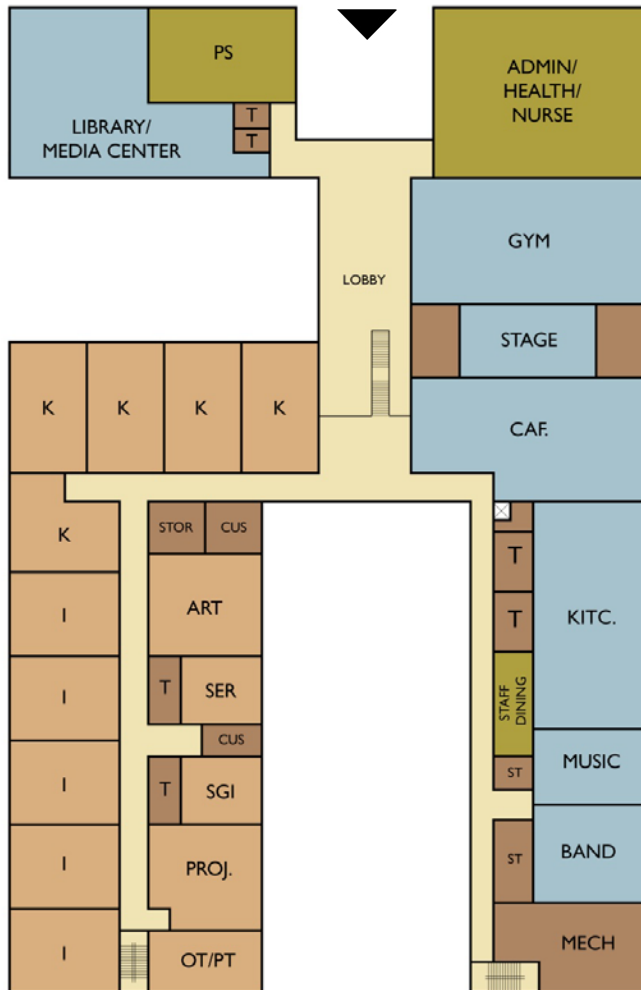
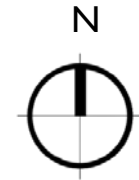


Site – New Building

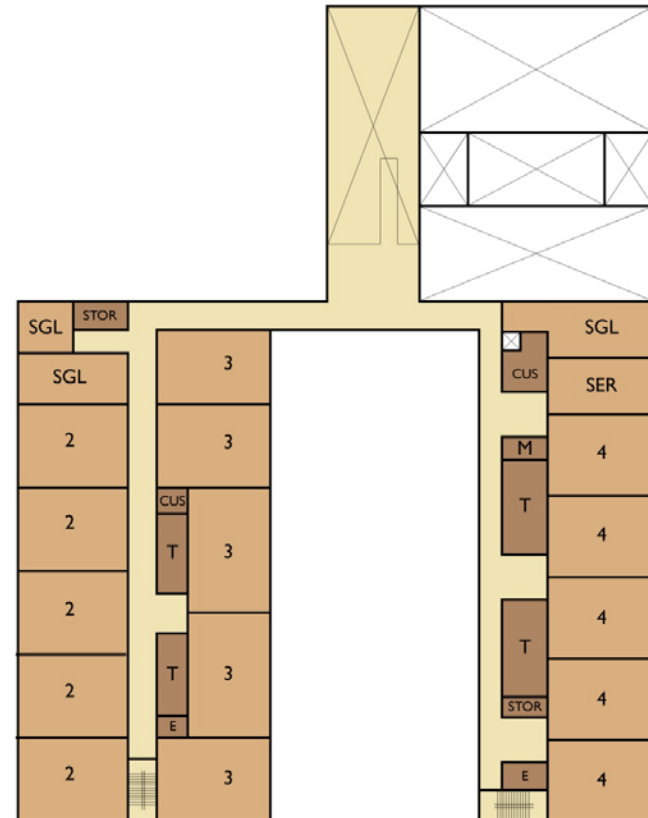


Floor Plan – New Building

- CLASSROOM
- CIRCULATION
- ADMINISTRATION
- UTILITY & SERVICE
- CORE

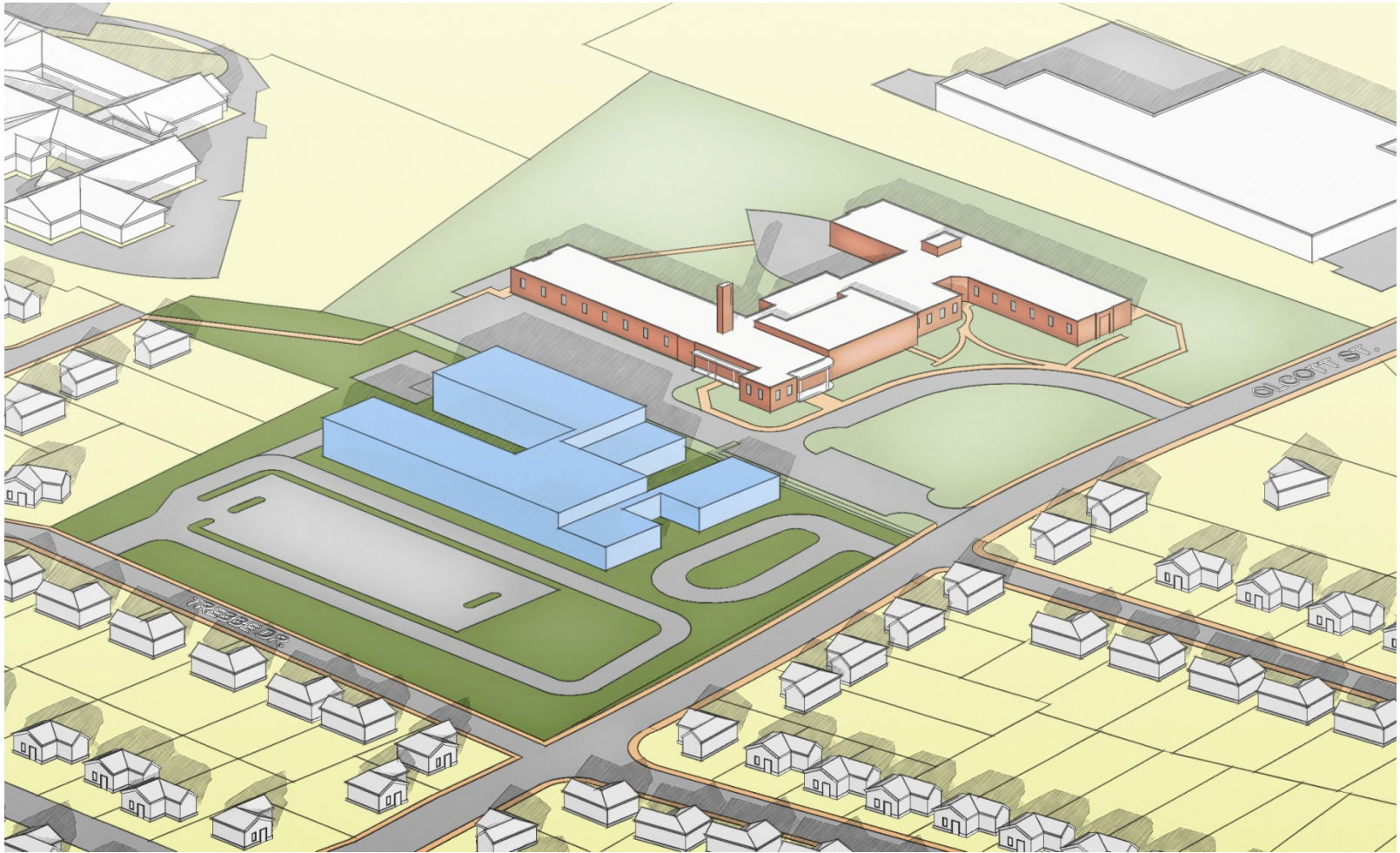


Level 1



Level 2

3D – New Building



Program – New Building

Classrooms	
Enrollment Projection	525 Students
# of Classrooms Needed	25 Classrooms @ 21 students
Program	New
Classrooms	25 @ 900 SF = 22,500 SF
Special Education	3 @ 600 SF = 1,800 SF
Small Group	3 @ 600 SF = 1,800 SF
OP/PT	750 SF
Project Classroom	1,200 SF
Art Classroom	1,250 SF
Music Classroom	900 SF
Band/Orchestra/Chorus	1,200 SF
Admin/Heath/Nurse	4,000 SF
Pupil Services	1,500 SF
Staff Work	400 SF
Staff Lounge	450 SF
Cafeteria	2,850 SF
Library/Media Center	3,300 SF
Gymnasium	6,000 SF
NET SF	49,900 SF
GROSS SF	72,000 SF

Conceptual Budget – New Building

New School	
New Construction	\$23,040,000
Sitework Allowance	\$2,000,000
Sub Total	\$25,040,000
Estimate Contingency	\$5,008,000
Escalation	\$2,704,320
Bond Costs	\$327,523
CM Fee	\$661,597
CM Reimbursables	\$1,965,139
Total Construction Cost	\$35,706,579
Soft Costs	\$8,926,645
Total Project Costs	\$44,633,224
Estimated Eligible Costs	\$42,401,563
Estimated Net State Reimbursement Percentage	55%
Estimated Net Cost to Manchester	\$21,312,364