

School Modernization and Reinvestment Team Revisited (SMARTR)

April 25, 2012

Demographics

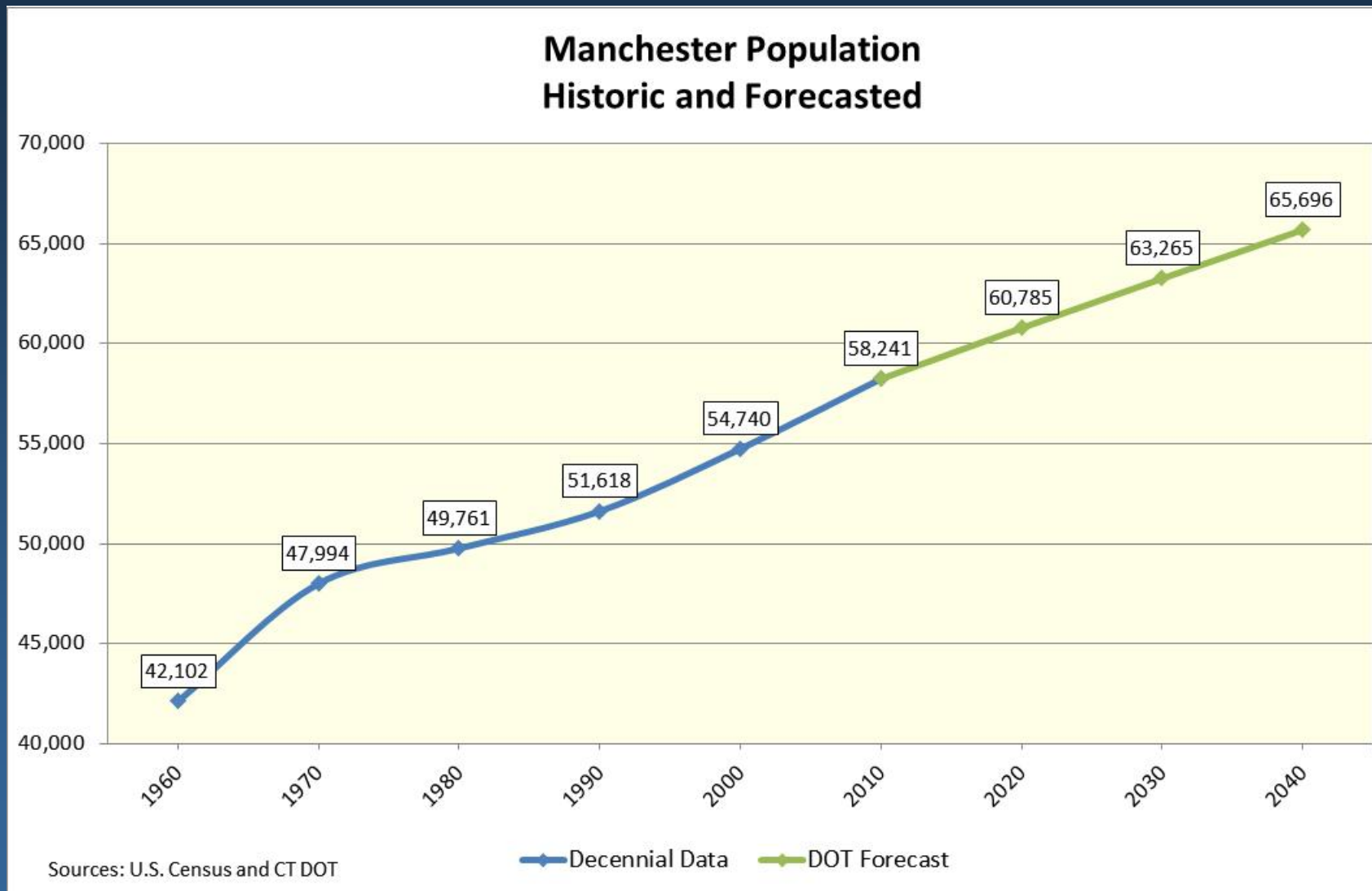
Demographic Profile

3

- Total Population – 58,241 (2010 Census) +3,681 last decade
- School Age Population – 8,517 (2010 Census) – 486 last decade
- Population under 5 yrs – 3,736 (2010 Census) + 284 last decade
- Total Households 24,689 (2010 Census) + 1,492 last decade
- Housing Tenure (Owner/Renter) – 56.7/43.3 (2010) 56.3/43.7 (2000)
- Family size unchanged for last decade

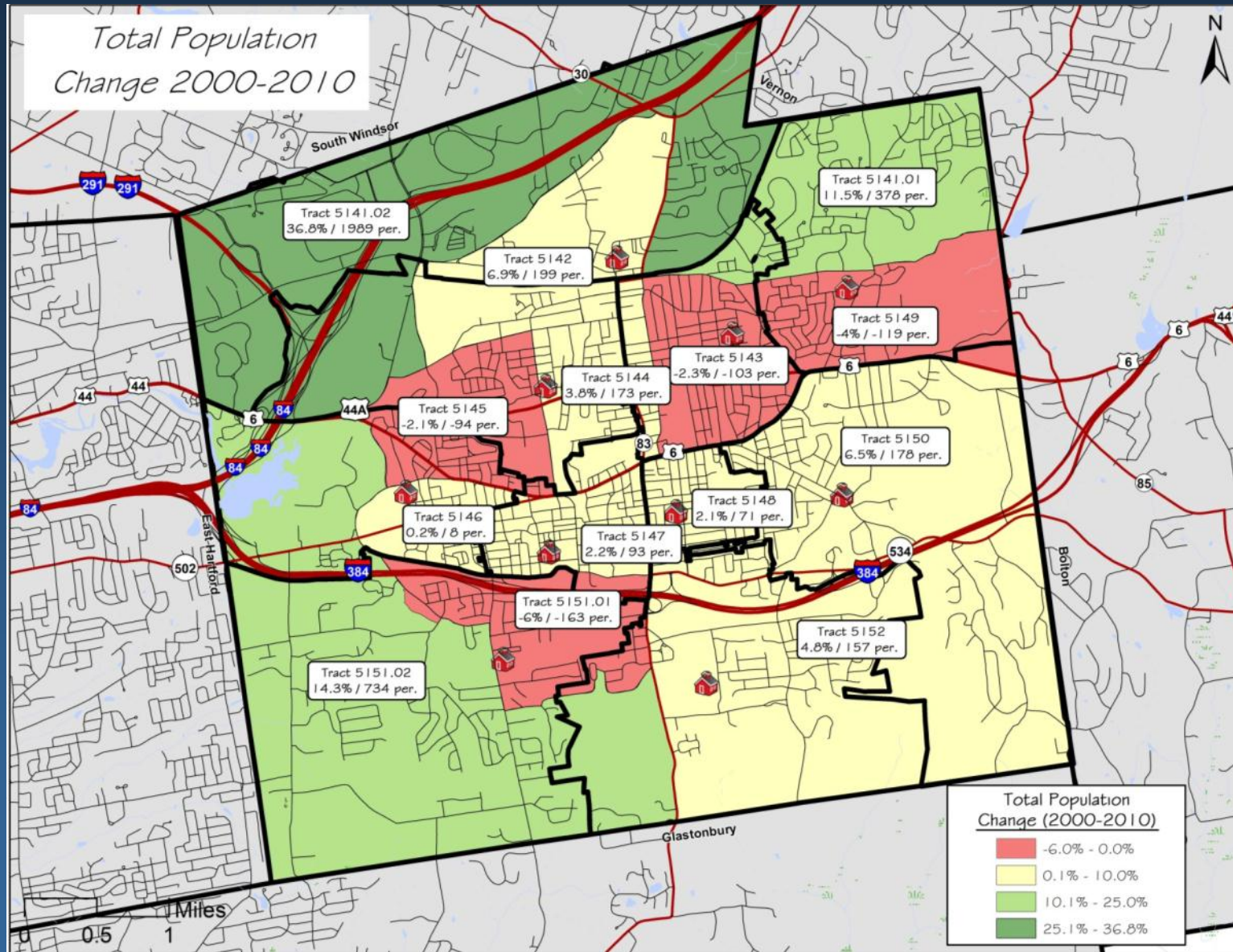
Population Trends

4

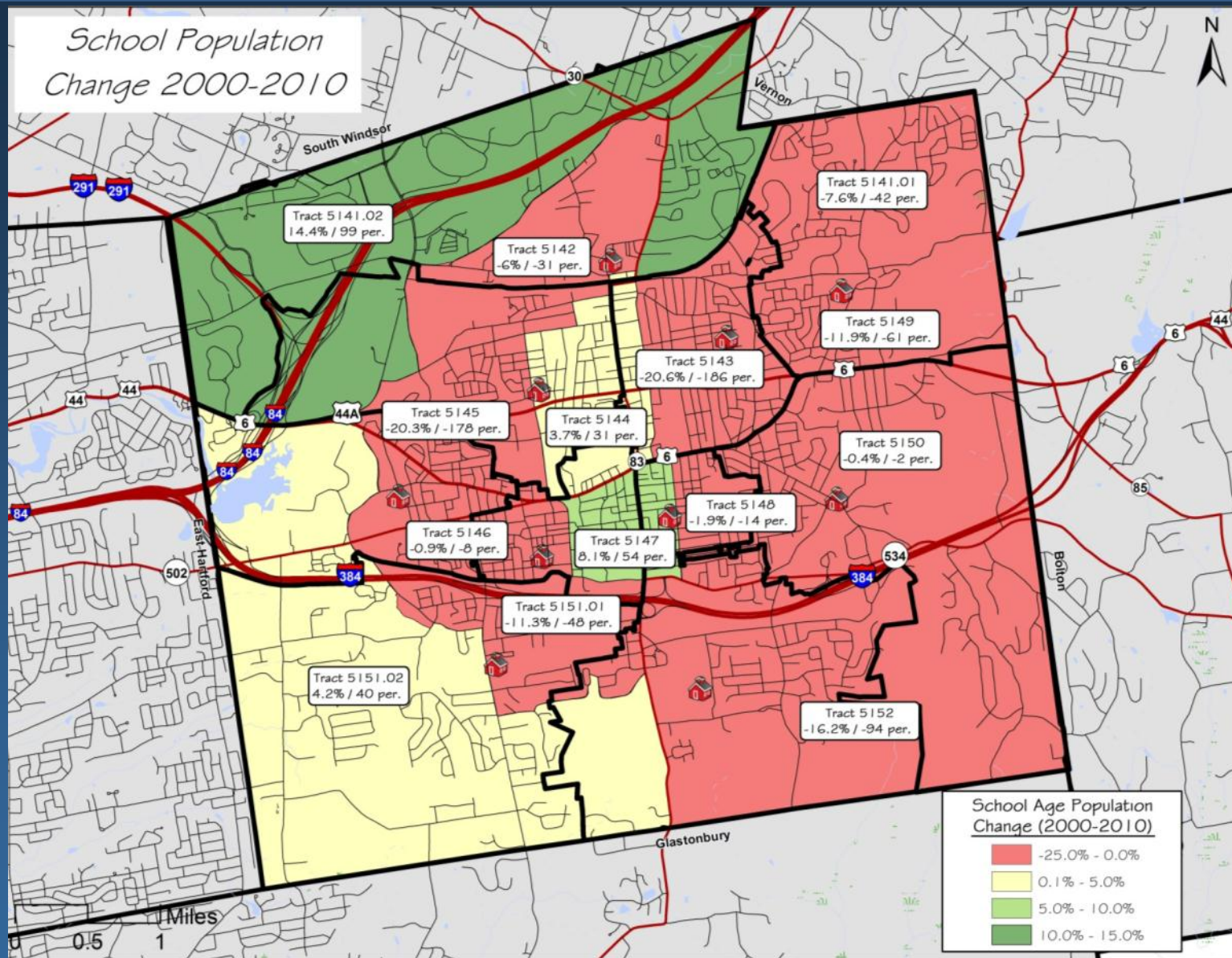


Total Population Changes by Census Tract

5



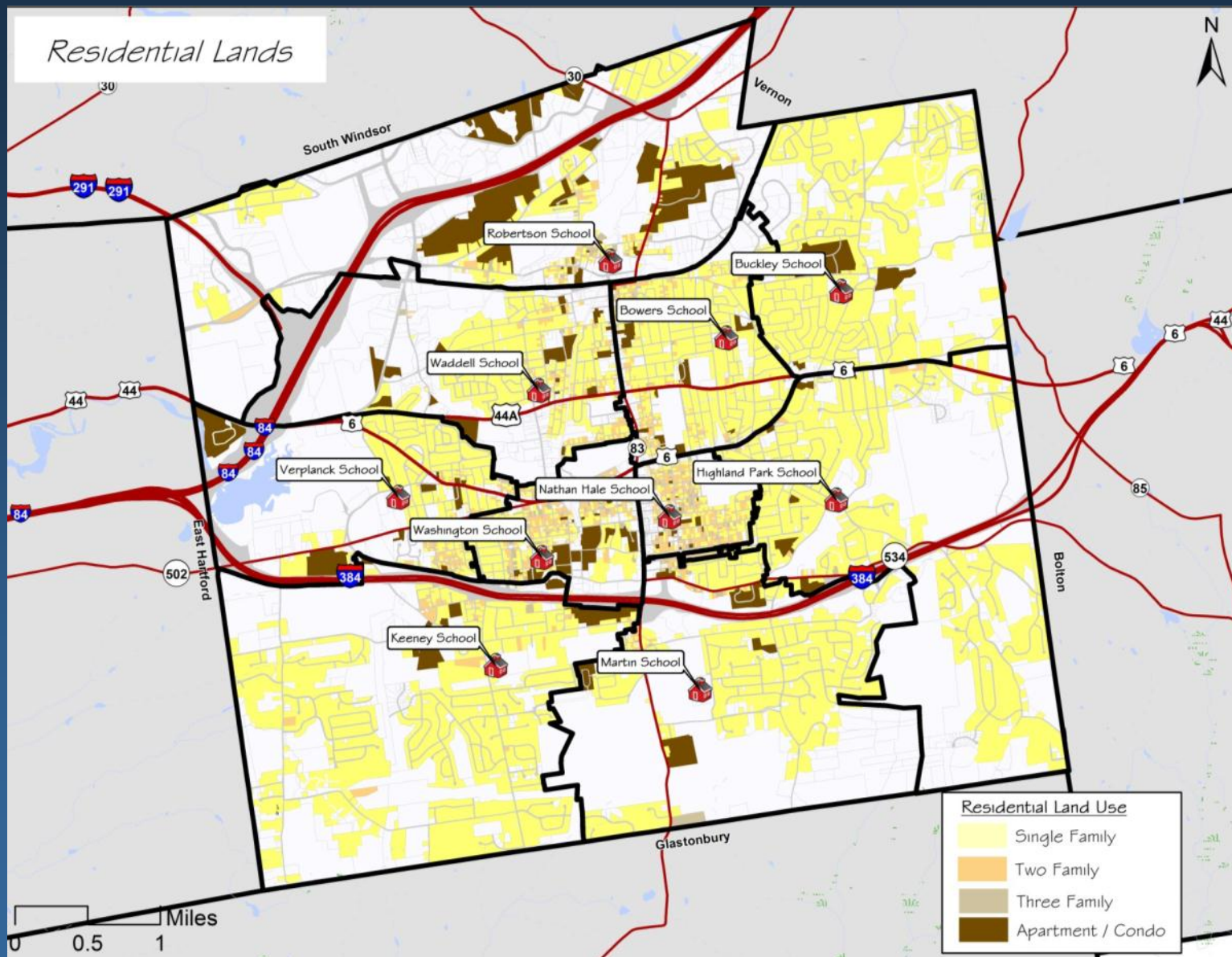
School Age Population Change



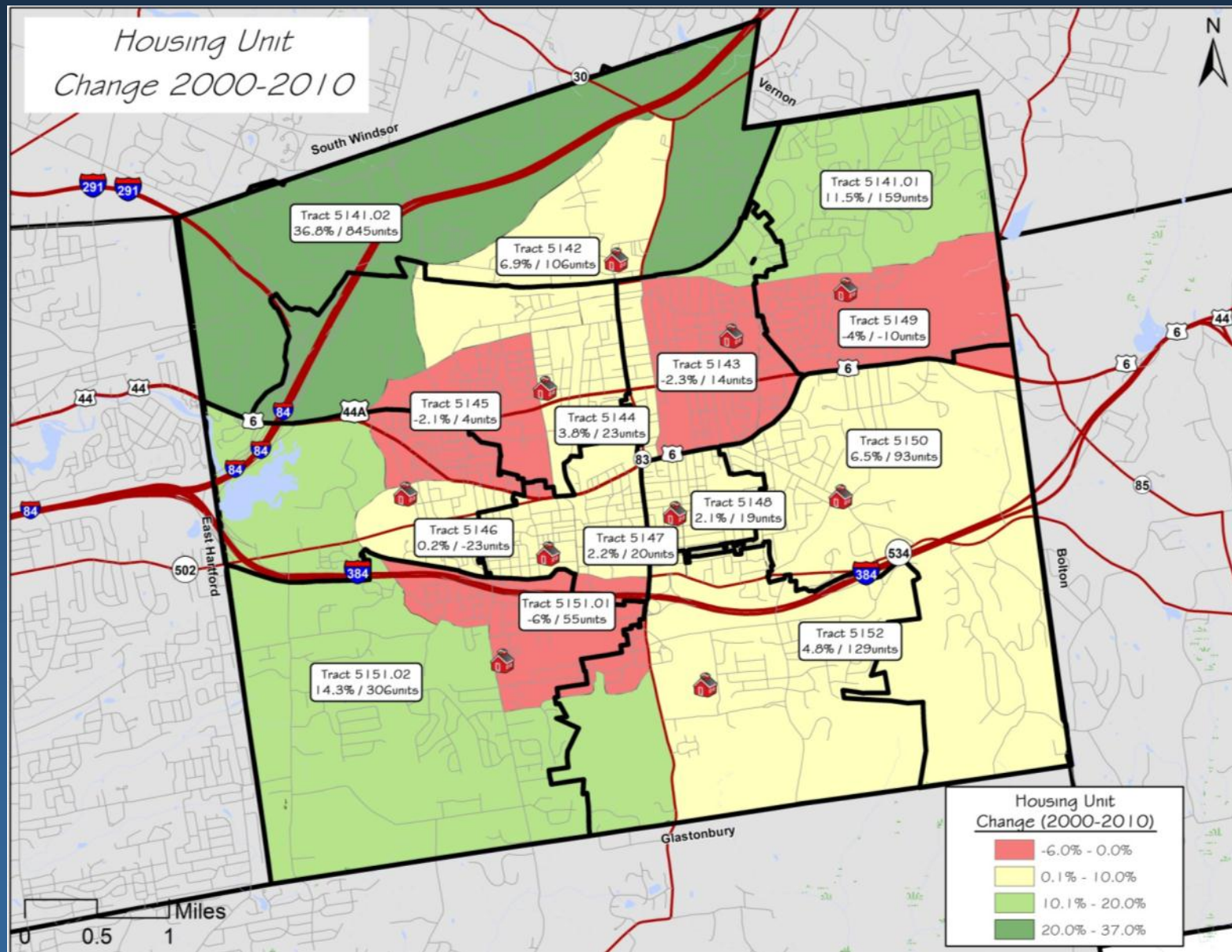
Housing

Housing Distribution

8

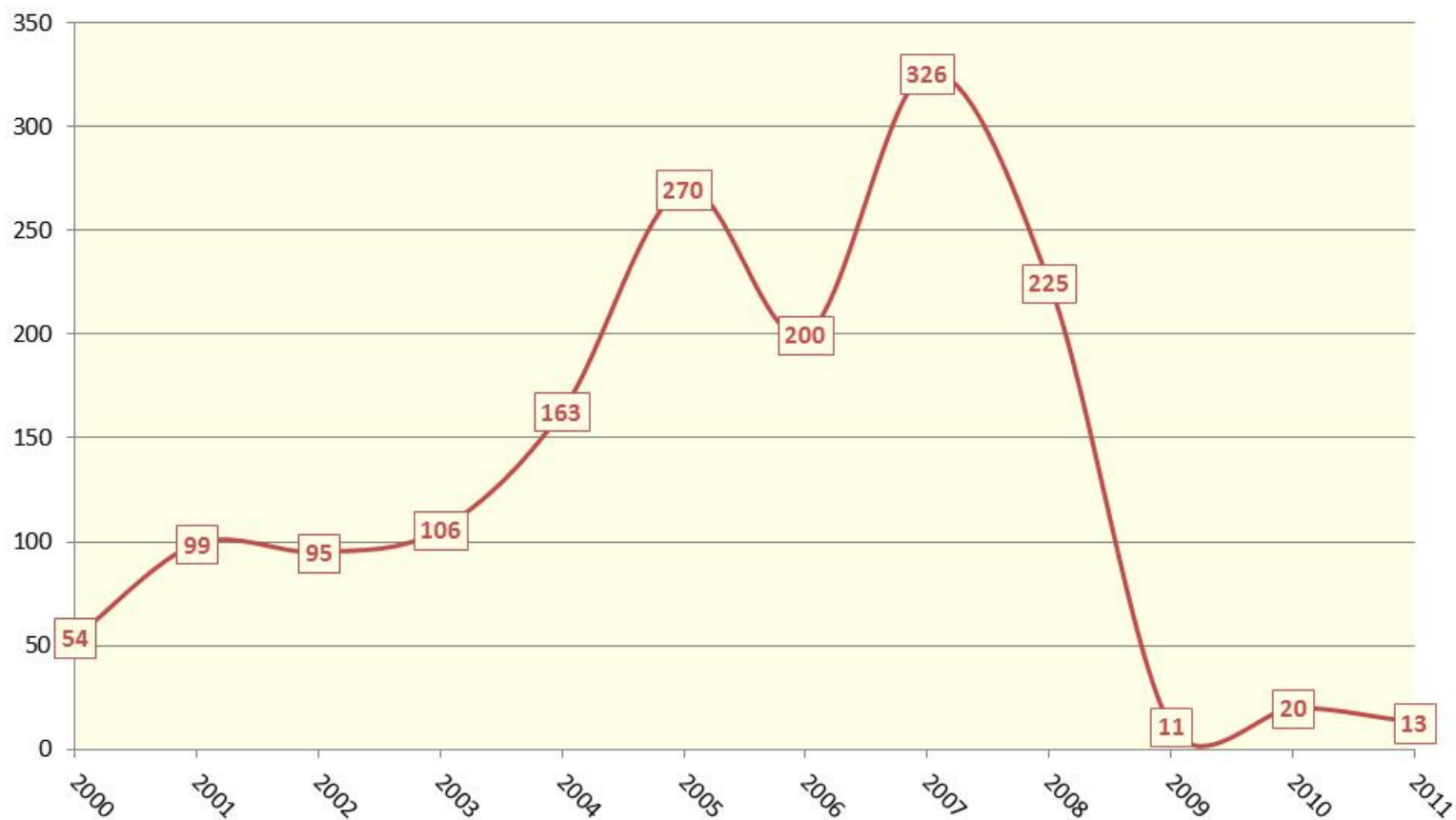


Housing Unit Change



Housing Permits

**Manchester Annual Housing Permits
2000 thru 2011**

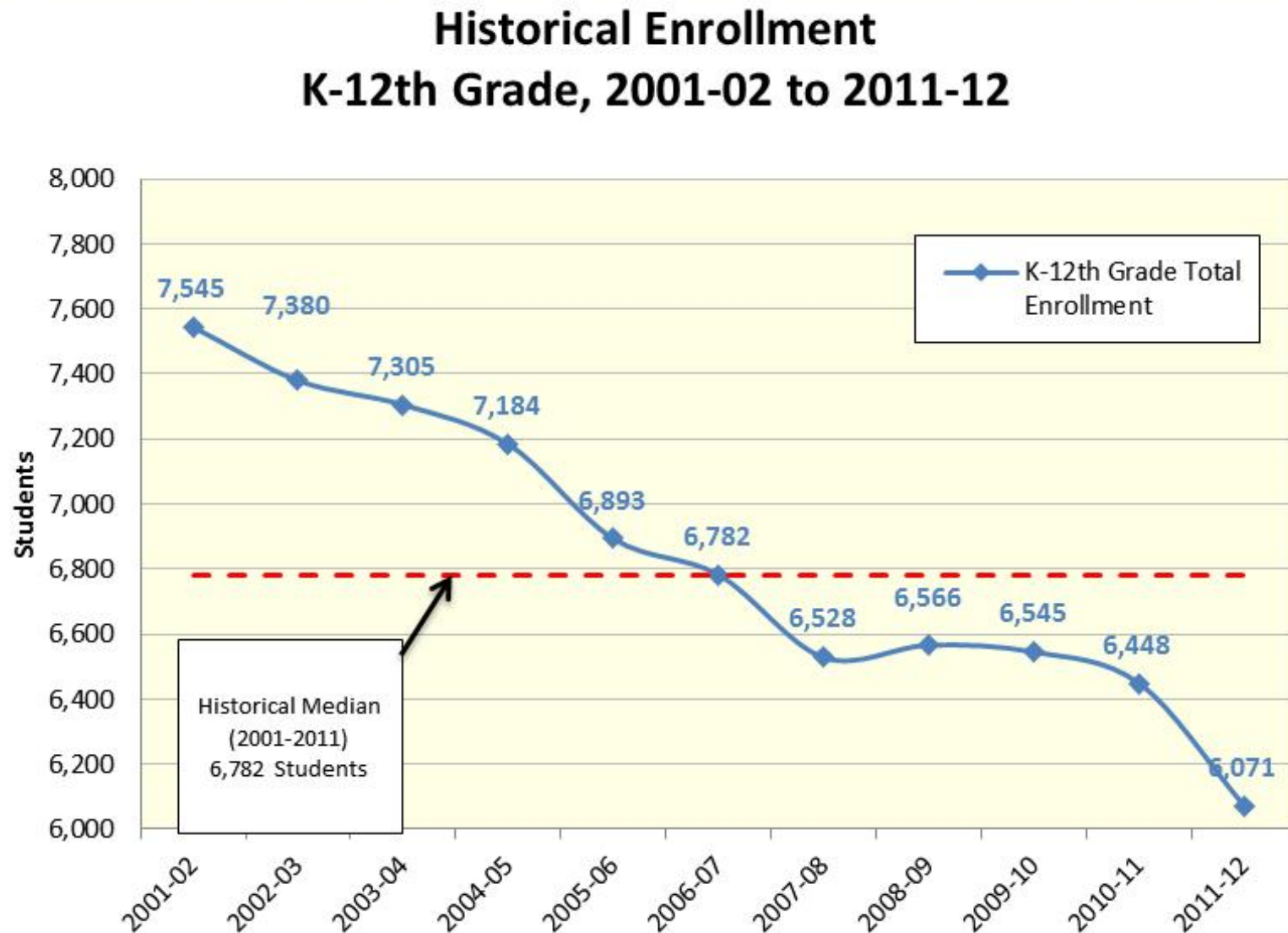


Source: CT Department of Economic and Community Development, Net Annual Housing Permits

Enrollment Patterns

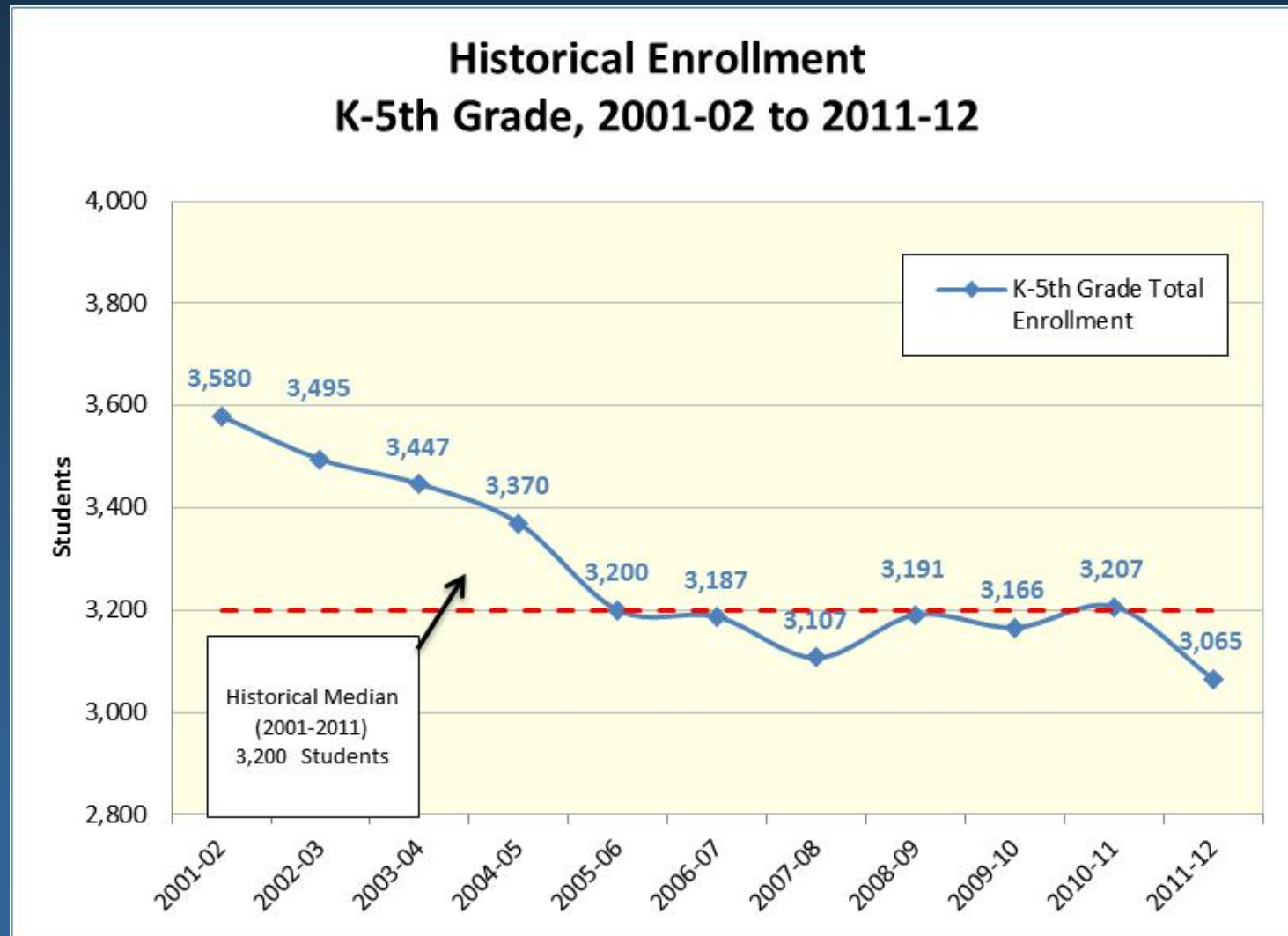
K- 12th Historic Enrollments

12



K-5th Historic Enrollments

13



Elementary Historic Enrollments

14

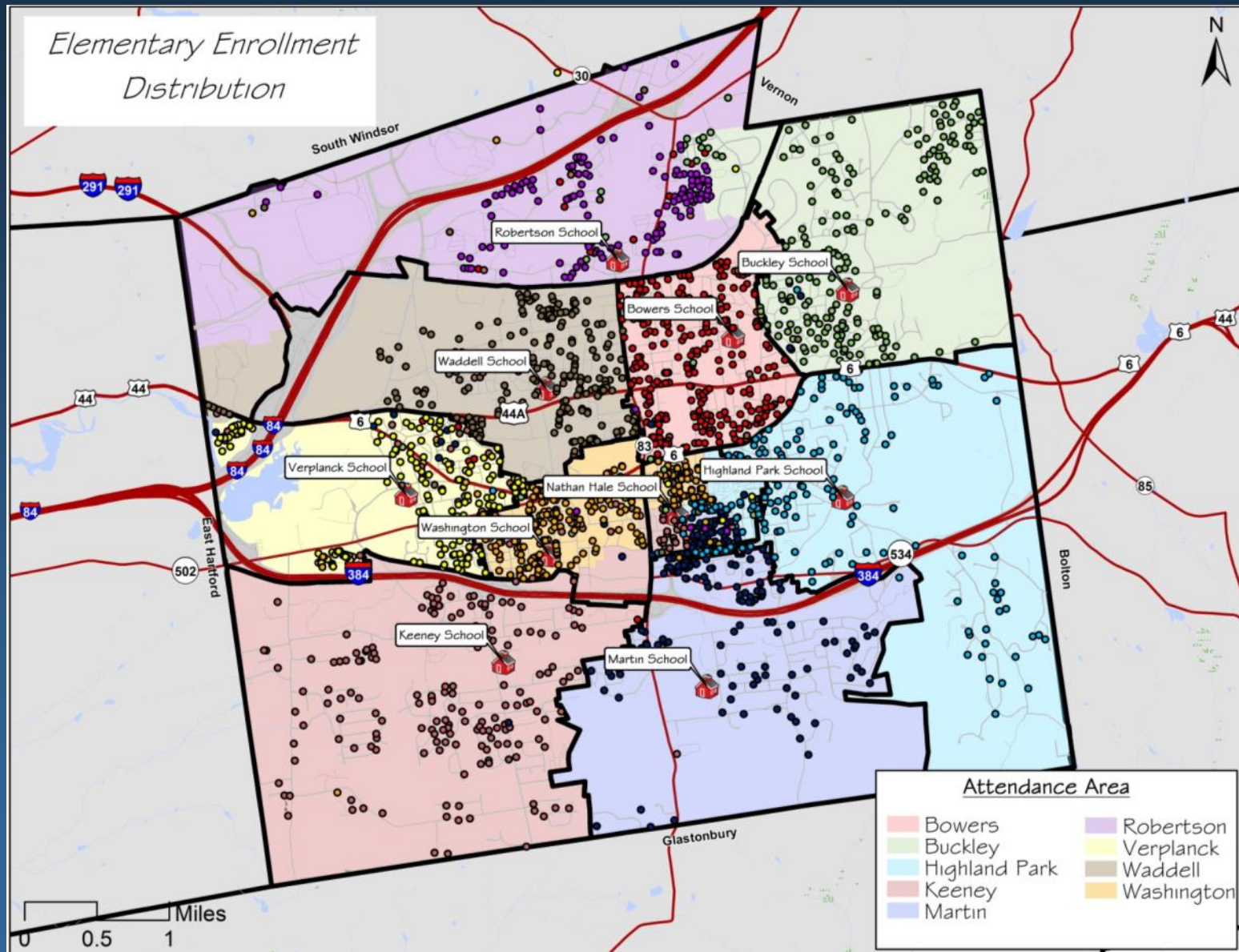
Manchester Historic Elementary School Enrollments (K-5)											
School	2001-02	2002-03	2003-04	2004-05	2005-06	2006-07	2007-08	2008-09	2009-10	2010-11	2011-12
Bowers	470	438	413	378	357	357	371	375	431	409	407
Buckley	320	305	289	285	290	293	253	255	292	323	273
Highland Park	315	305	296	296	265	250	229	246	278	273	259
Keeney	365	385	354	354	337	345	354	366	398	386	321
Martin	218	234	246	230	228	215	192	208	260	221	207
Nathan Hale	330	305	315	320	345	329	343	311	260	234	261
Robertson	403	395	416	410	365	392	381	391	335	366	347
Verplanck	408	391	365	329	306	337	328	379	291	340	348
Waddell	449	404	392	407	361	325	306	336	311	348	343
Washington	302	333	361	361	346	344	350	324	310	307	299
Elementary Total:	3,580	3,495	3,447	3,370	3,200	3,187	3,107	3,191	3,166	3,207	3,065

For 2011-2012 Highland Park Students returned to Highland Park in table above.



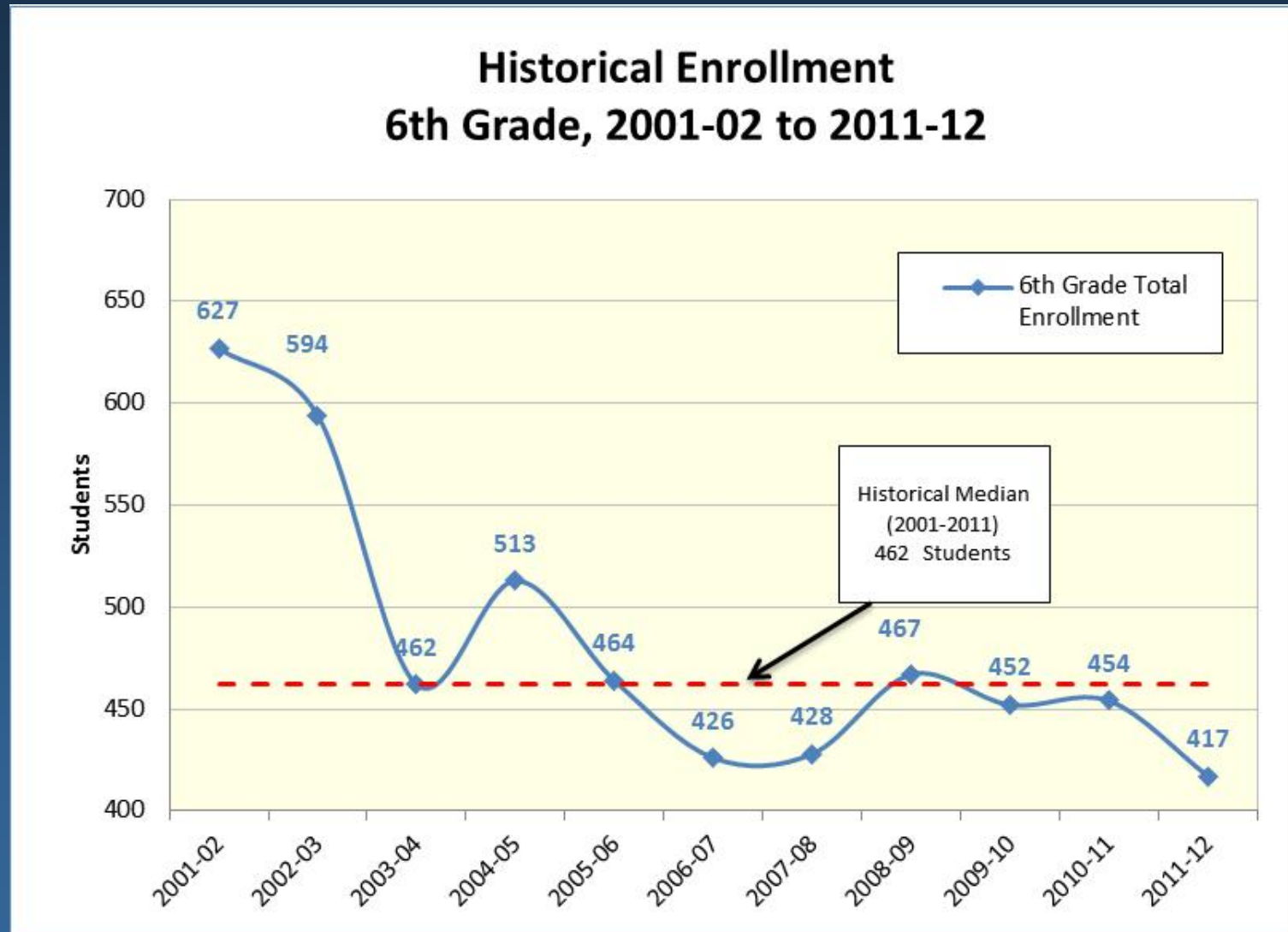
Elementary Enrollment Distribution

15



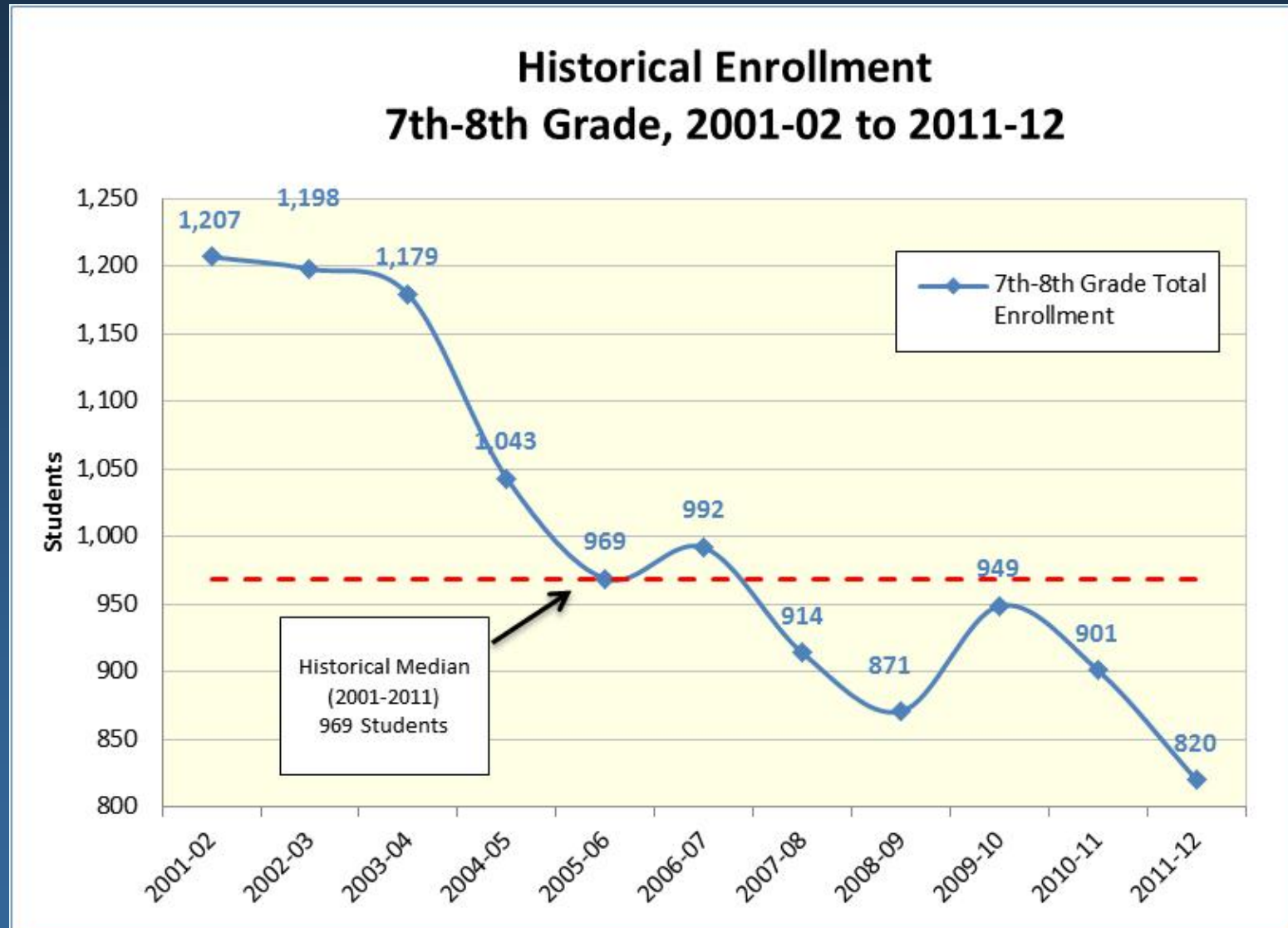
6th Grade Historic Enrollments

16



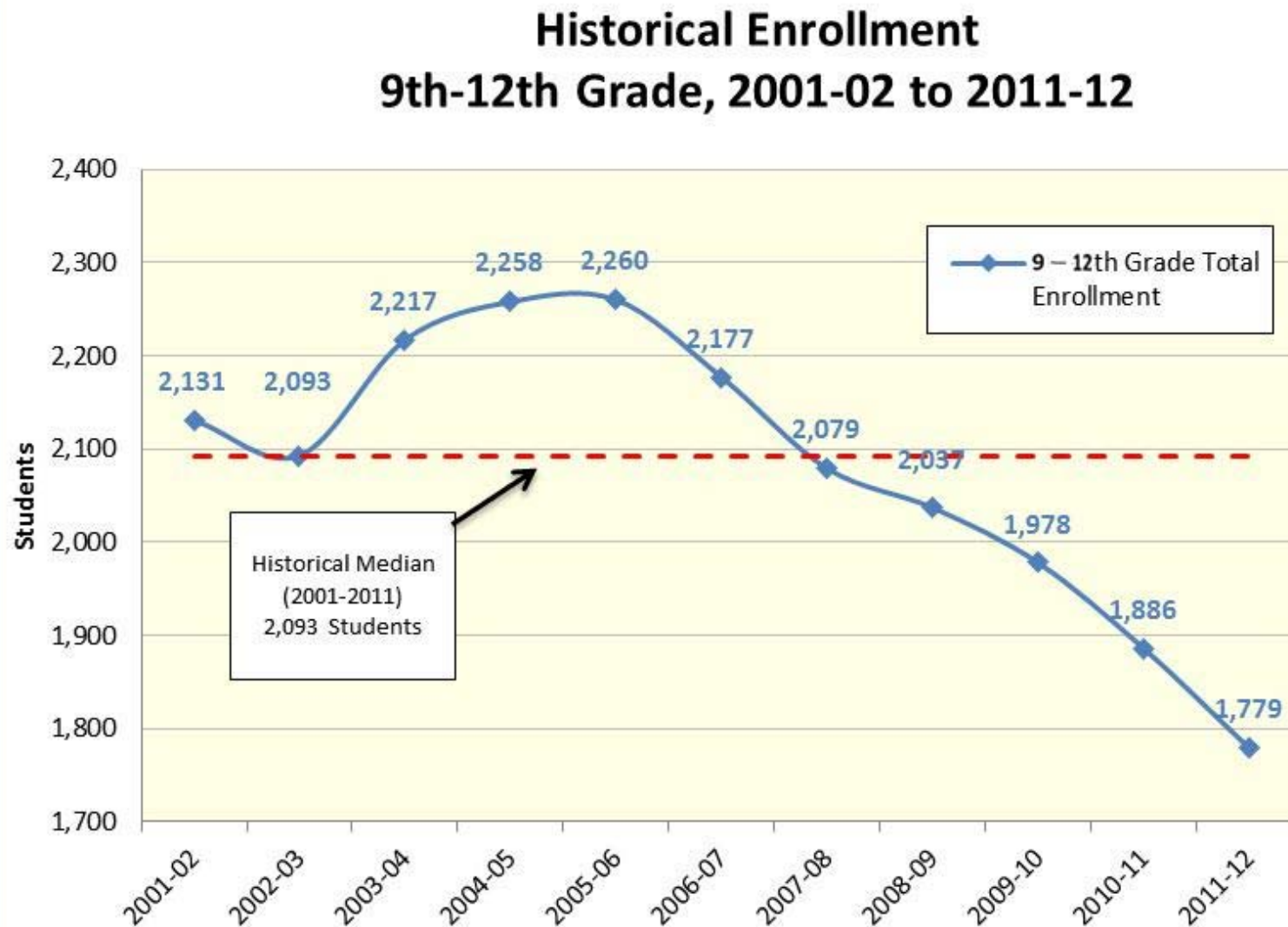
7th – 8th Grade Historic Enrollments

17



9th-12th Grade Historic Enrollments

18

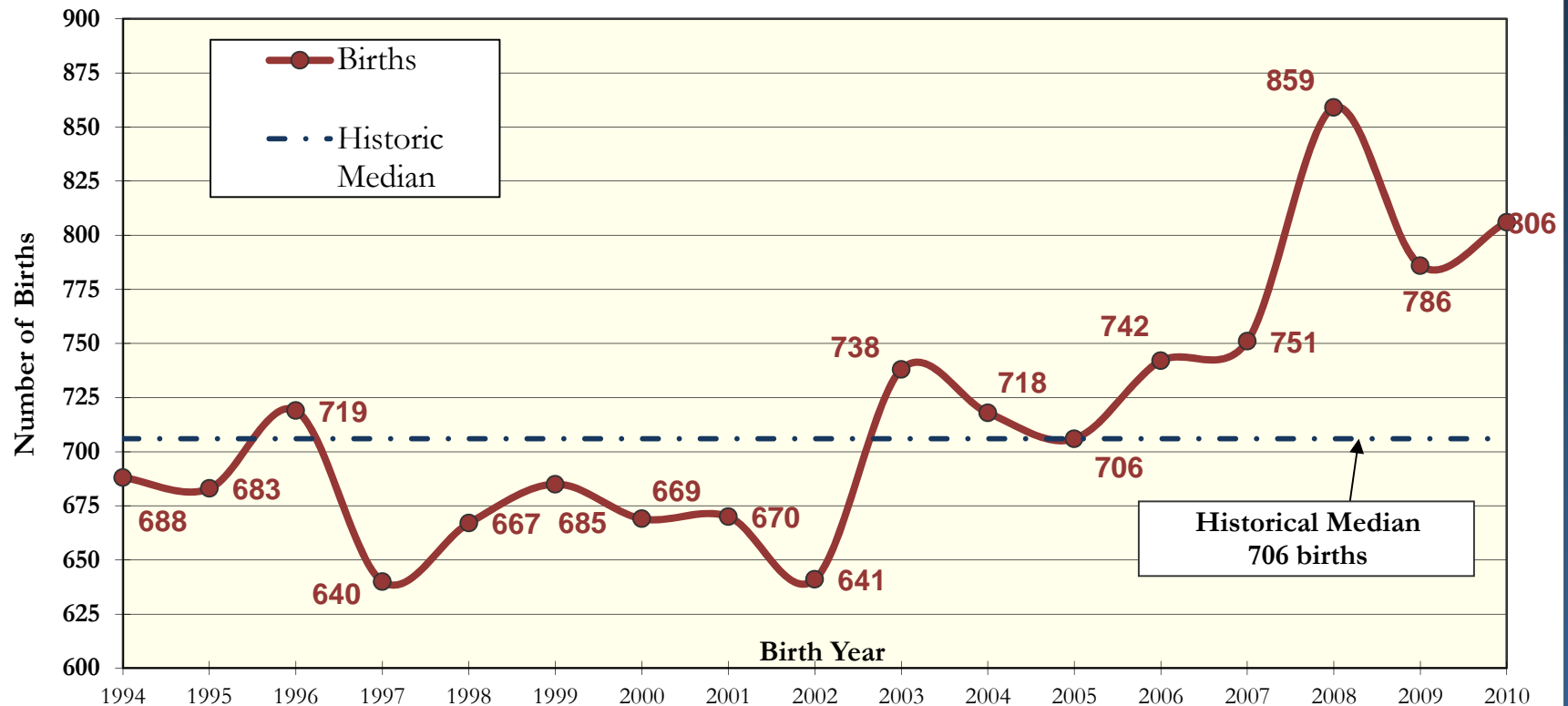


Births

Recorded Births

20

Manchester Birth History 1994-2010



Data Sources for Births

Connecticut Department of Health Vital Records & NESDEC

Births

21

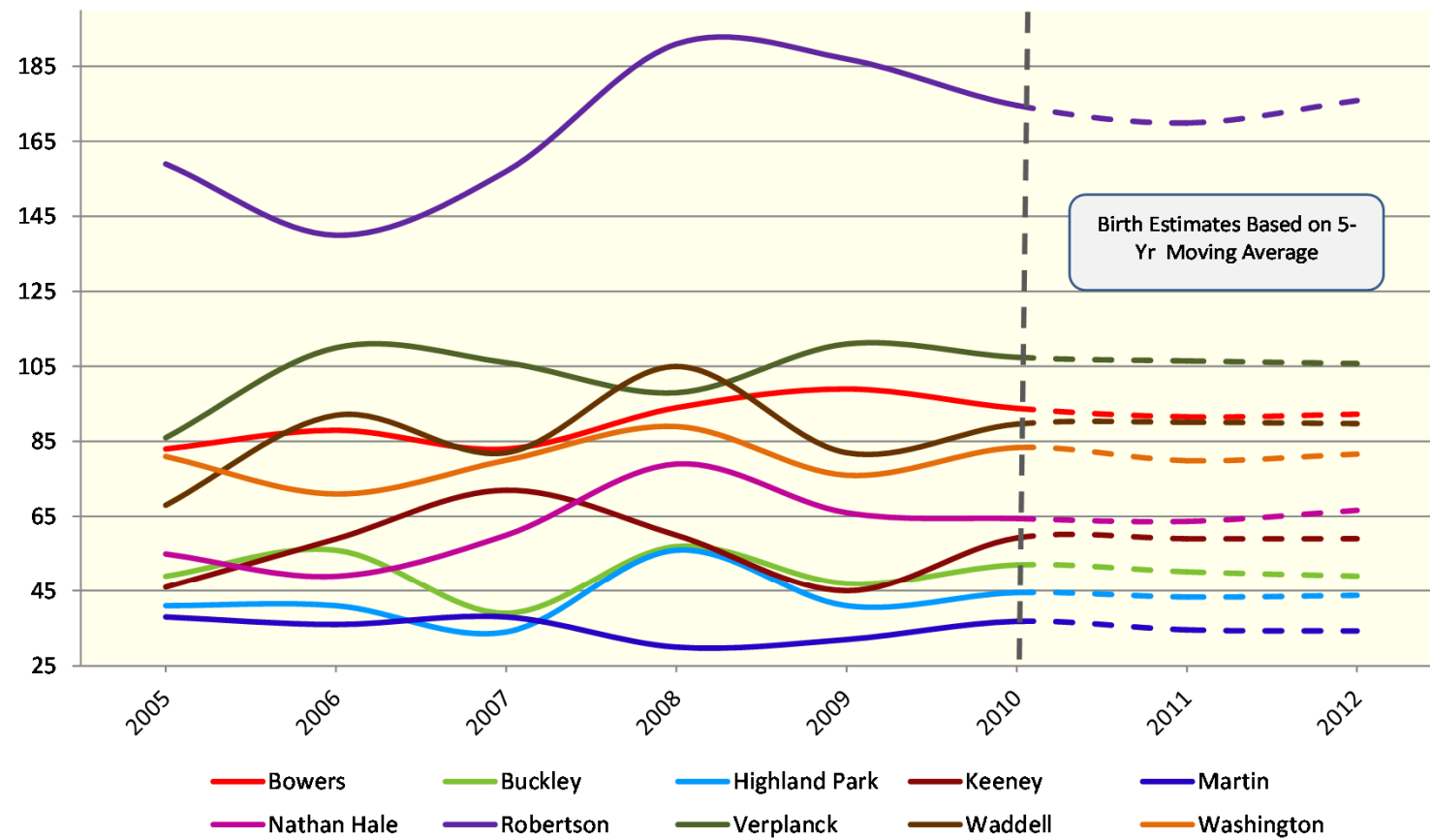
Births by School District							Projections		
School	2005	2006	2007	2008	2009	2010	2011	2012	2013
Bowers	83	88	83	94	99	94	92	92	94
Buckley	49	56	39	57	47	52	50	49	51
Highland Park	41	41	34	56	41	44	43	44	46
Keeney	46	59	72	60	45	59	59	59	56
Martin	38	36	38	30	32	37	35	34	34
Nathan Hale	55	49	60	79	66	64	64	67	68
Robertson	159	140	157	191	187	175	170	176	180
Verplanck	86	110	106	98	111	107	106	106	106
Waddell	68	92	82	105	82	90	90	90	91
Washington	81	71	80	89	76	83	80	82	82
Total:	706	742	751	859	786	806	789	798	808



Births

22

Births by School District, 2004-2012



Source: CT Department of Health Vital Statistics

This study was approved by the DPH HIC. Certain data used in this study were obtained from DPH. MMI assumes full responsibility for analyses and interpretation of this data.

Enrollment Projections

Persistence Ratios

24

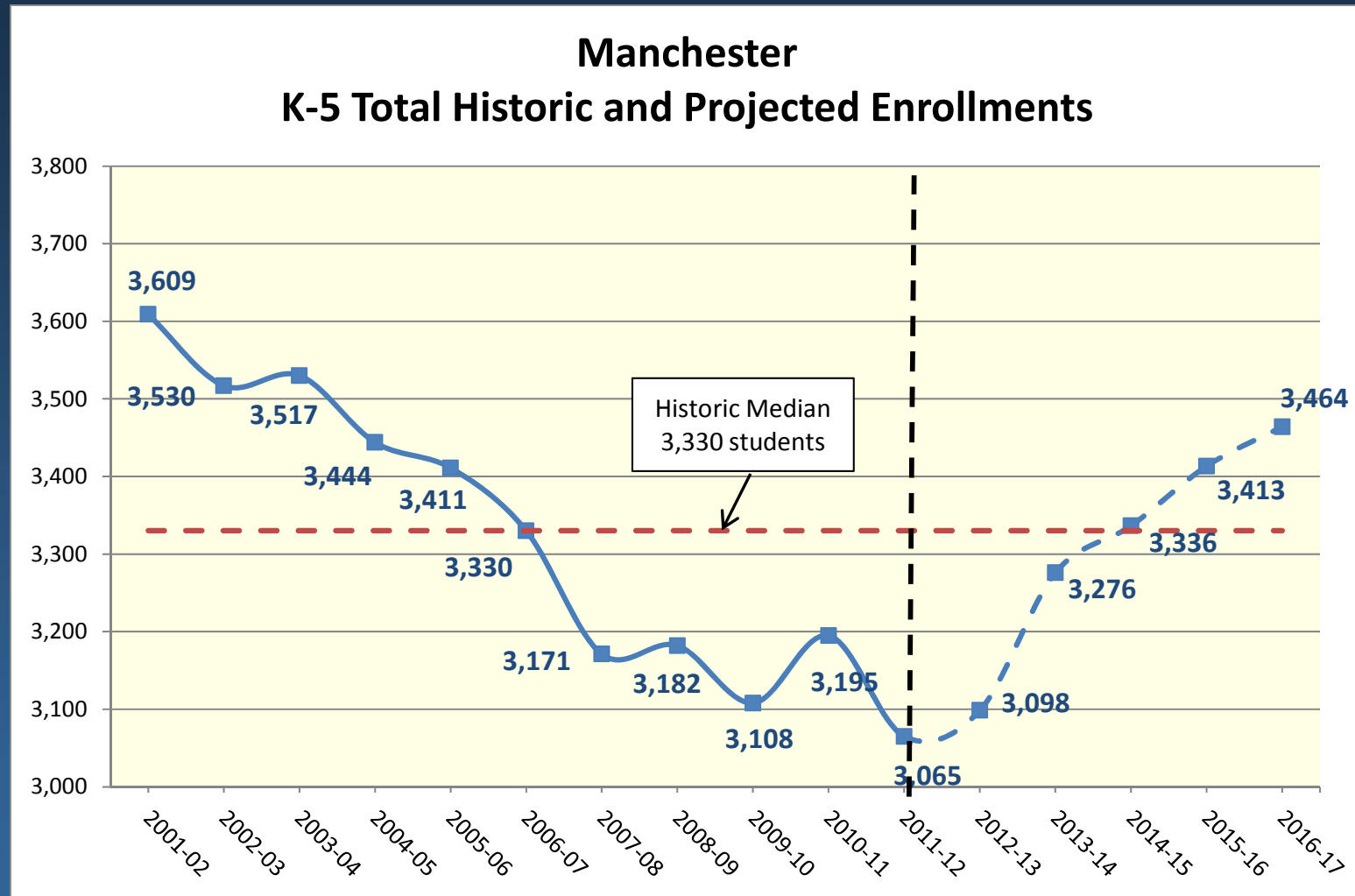
Birth to Kindergarten Persistence Ratios			
School Year	Actual Enrollment	Births 5 Years Ago	Ratio
1999-2000	523	688	0.760
2000-2001	525	683	0.769
2001-2002	581	719	0.808
2002-2003	520	640	0.813
2003-2004	538	667	0.807
2004-2005	563	685	0.822
2005-2006	513	659	0.778
2006-2007	540	651	0.829
2007-2008	489	607	0.806
2008-2009	538	707	0.761
2009-2010	551	690	0.799
2010-2011	615	706	0.871
2011-2012	506	742	0.682
Long Term	7,002	8,844	0.793
5-Year Avg	2,699	3,452	0.784
3-Year Avg	1,672	2,138	0.784

Kindergarten through 5th Persistence Ratios					
Year	K-1	1-2	2-3	3-4	4-5
2000-2001	1.140	0.921	0.977	0.994	0.995
2001-2002	1.088	0.968	1.037	0.987	1.035
2002-2003	1.053	1.012	1.038	0.948	1.017
2003-2004	1.108	0.925	0.998	0.978	0.976
2004-2005	1.087	0.932	0.993	0.925	0.937
2005-2006	1.002	0.937	0.957	0.938	0.946
2006-2007	1.023	1.005	1.000	0.955	0.970
2007-2008	1.048	0.956	0.959	0.958	0.982
2008-2009	1.072	0.986	0.994	0.983	1.030
2009-2010	1.028	0.956	0.948	0.956	0.991
2010-2011	1.051	0.987	0.980	0.938	1.006
2011-2012	0.924	0.927	0.965	0.892	0.998
2000-2010 Average	1.052	0.959	0.987	0.954	0.990
5-Yr Average Grades K-5	1.025	0.963	0.975	0.945	1.003
3-Yr Average Grades K-5	1.001	0.957	0.964	0.929	0.998
5-Year Weighted Average	1.016	0.957	0.975	0.936	0.998

- Birth to Kindergarten –Historically around 0.8; however the last two years have resulted in the both the highest and the lowest ratios recorded in the past decade.
- Persistence Above 1 = in-migration; moved in or transferred in from non-public.
- Persistence Below 1 = out-migration; moved out or transferred out to non-public.

K-5th Grade Enrollment Projections

25

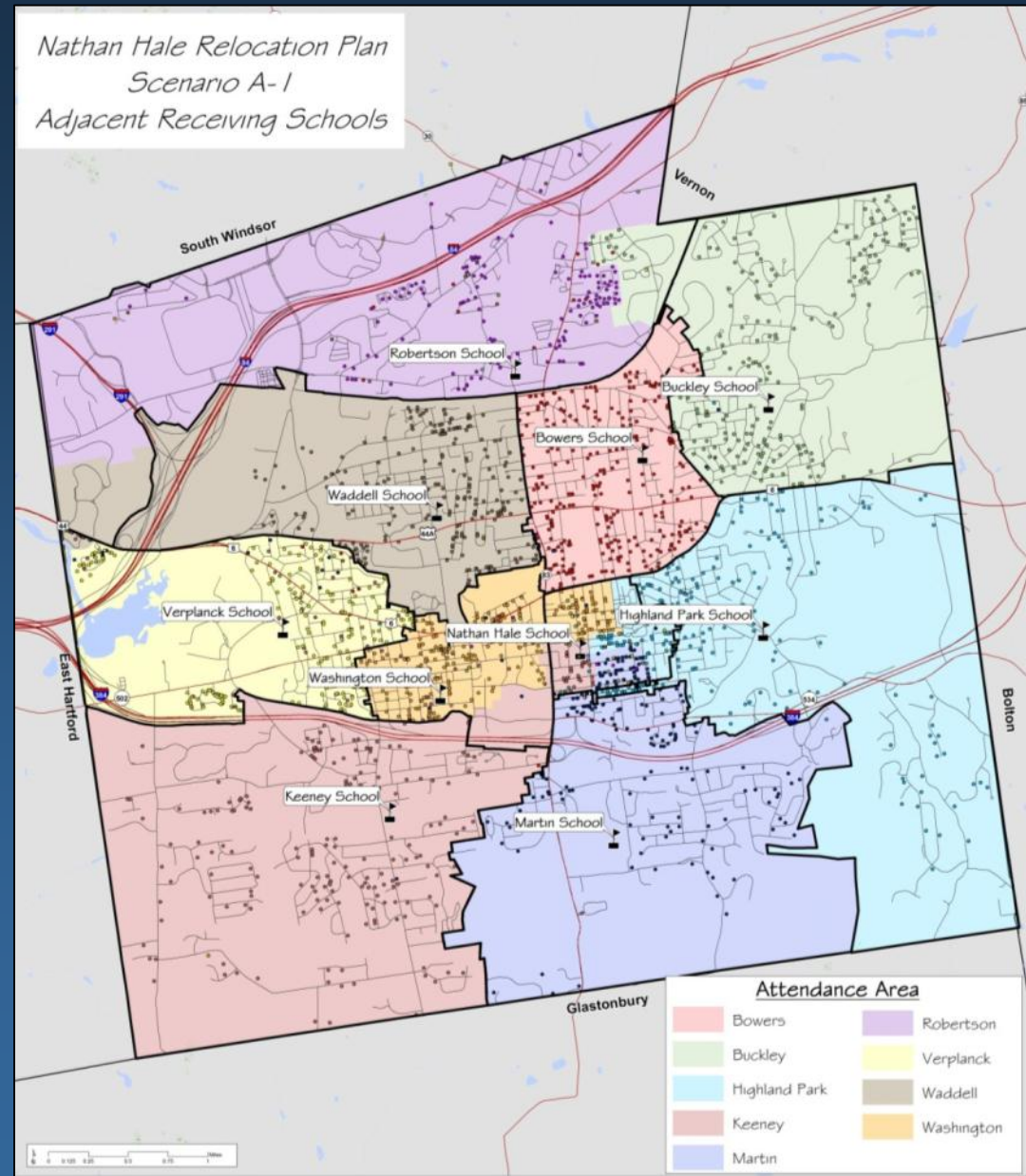


Nathan Hale Student Relocation Plan

Nathan Hale Relocation Plan

27

- All Highland Park Students return to Highland Park
- Distribute Nathan Hale Students to Adjacent Receiving Schools for 2012-13.
- Minor boundary Change to Address Racial Imbalance at Verplanck & Impending at Buckley



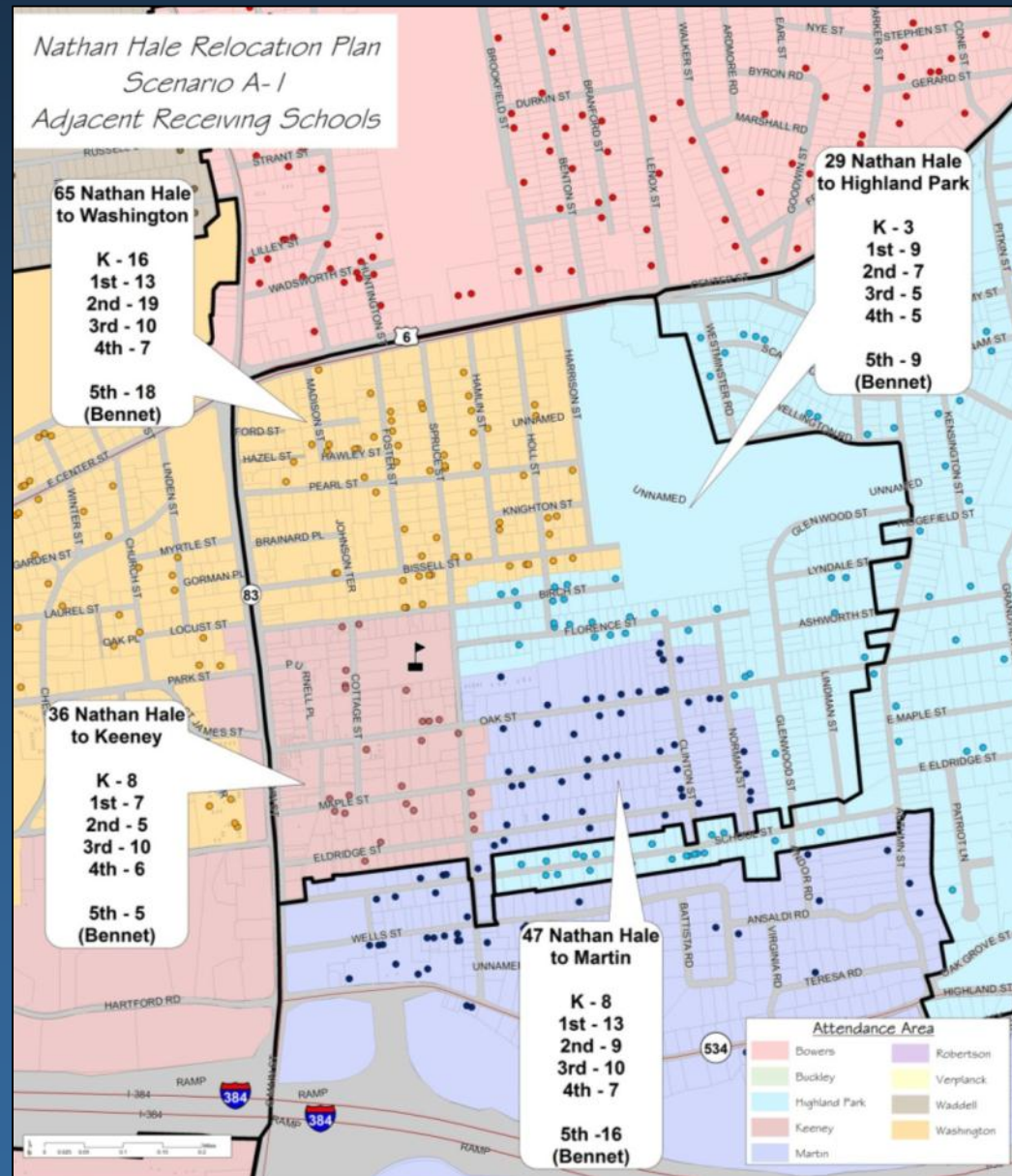
OM

Nathan Hale to Adjacent Receiving Schools

Nathan Hale K-4th Students Changing Schools:

- 29 to Highland Park
- 65 to Washington
- 47 to Martin
- 36 to Keeney

Nathan Hale 5th Progresses to Bennet Academy



Nathan Hale Relocation Projections

29

Scenario A-1 Projected Enrollments by School						
School	2011-12	2012-13	2013-14	2014-15	2015-16	2016-17
Bowers	411	415	424	429	433	434
Buckley	293	290	312	325	315	304
Highland Park	286	289	314	320	322	326
Keeney	369	373	382	358	376	392
Martin	273	276	295	292	294	300
Nathan Hale	0	0	0	0	0	0
Robertson	342	359	386	412	433	438
Verplanck	337	351	370	389	400	408
Waddell	364	372	409	421	445	464
Washington	390	372	385	390	395	398
Total:	3,065	3,098	3,276	3,336	3,413	3,464

Questions?