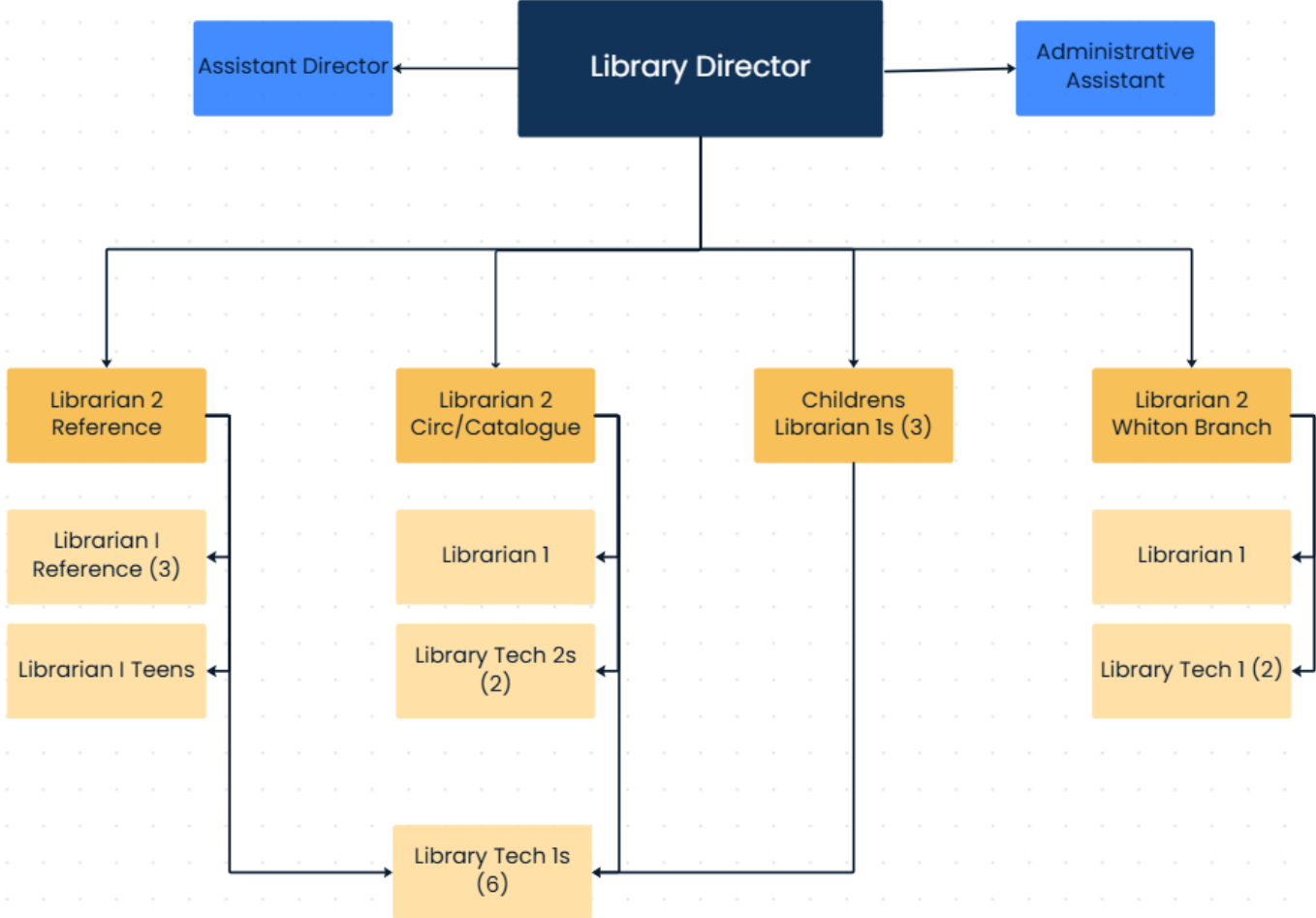
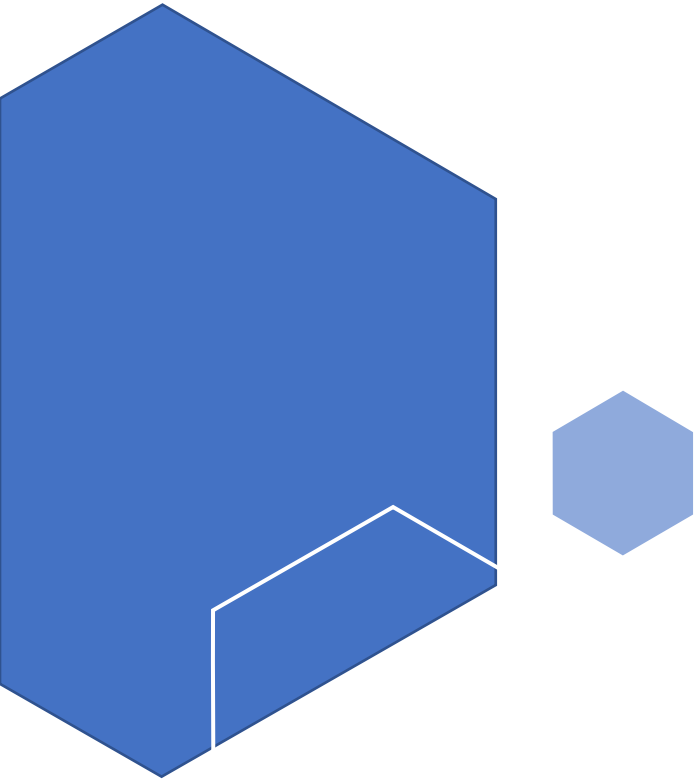


# Library FY27 Budget Request

March 25,  
2026

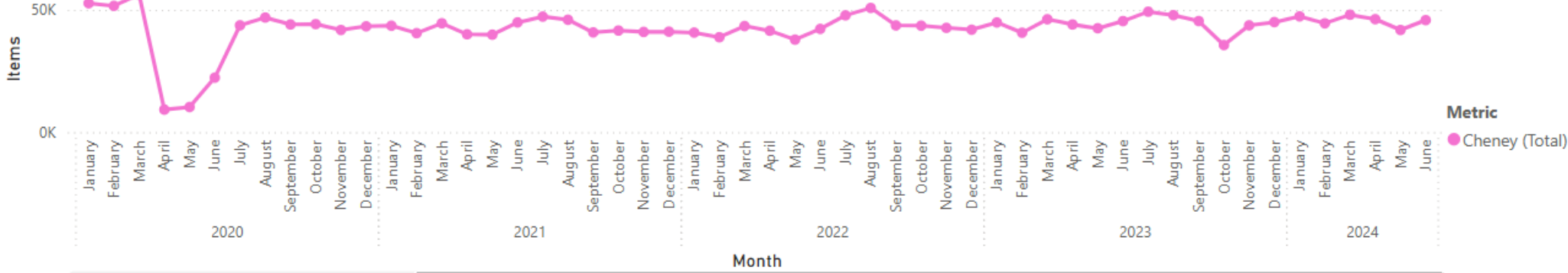


# Organization Chart

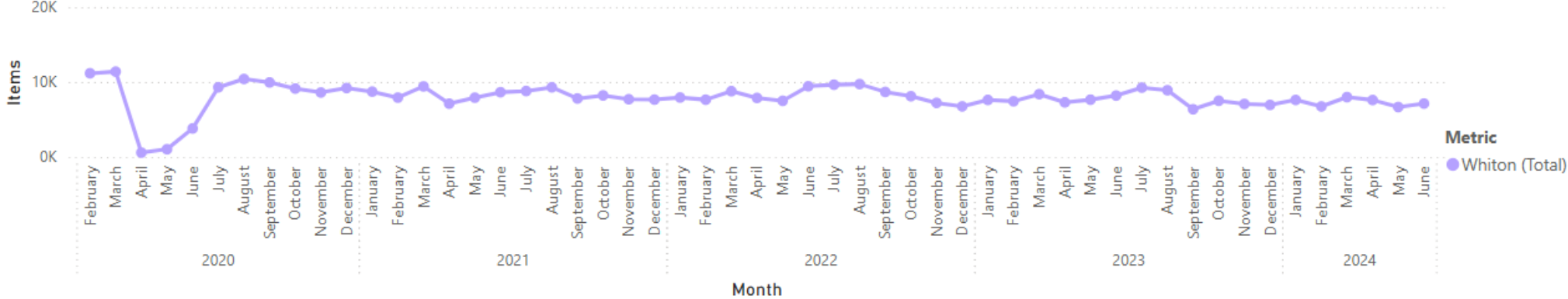


# Performance Measures

Cheney Library - Items Checked Out by Category



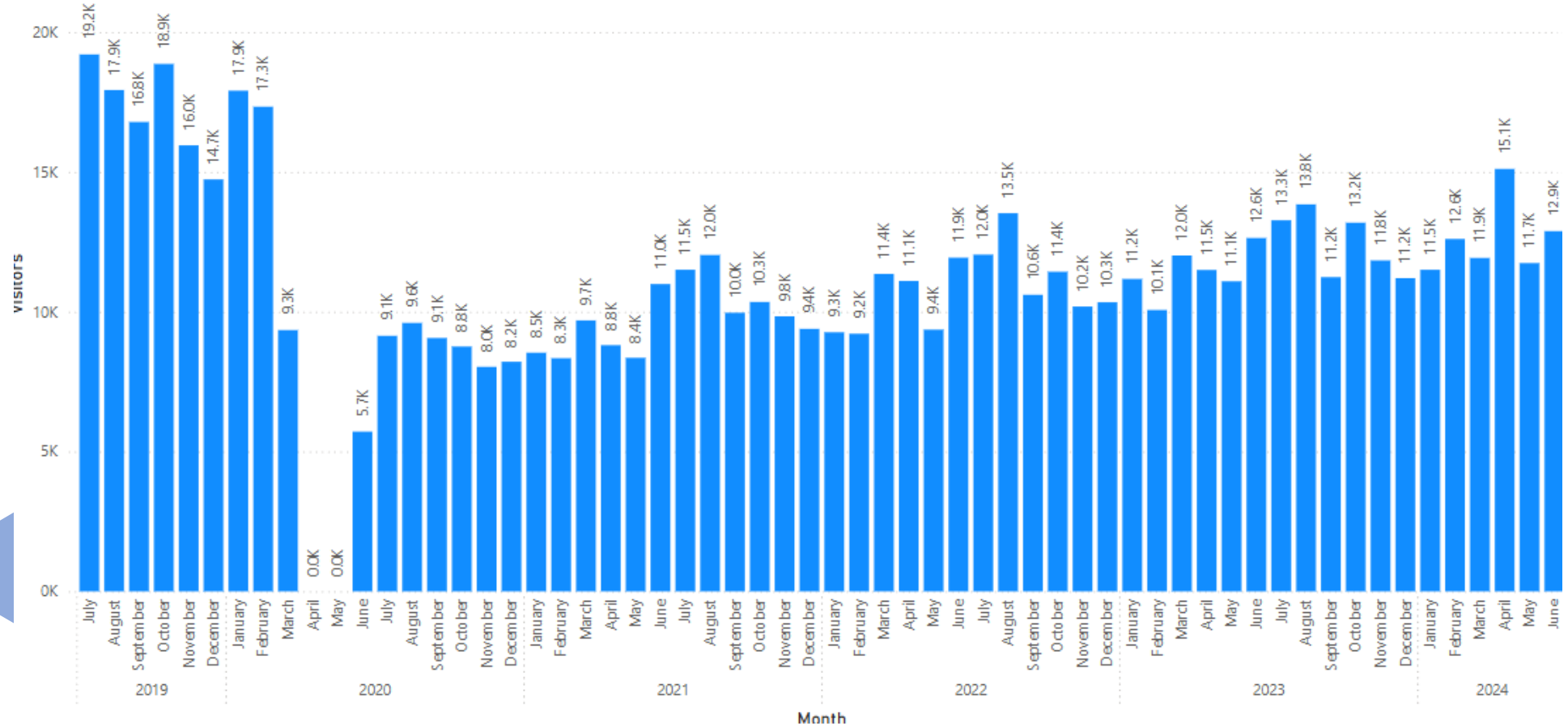
Whiton Library - Items Checked Out by Category



# Performance Measures

[Back to report](#)

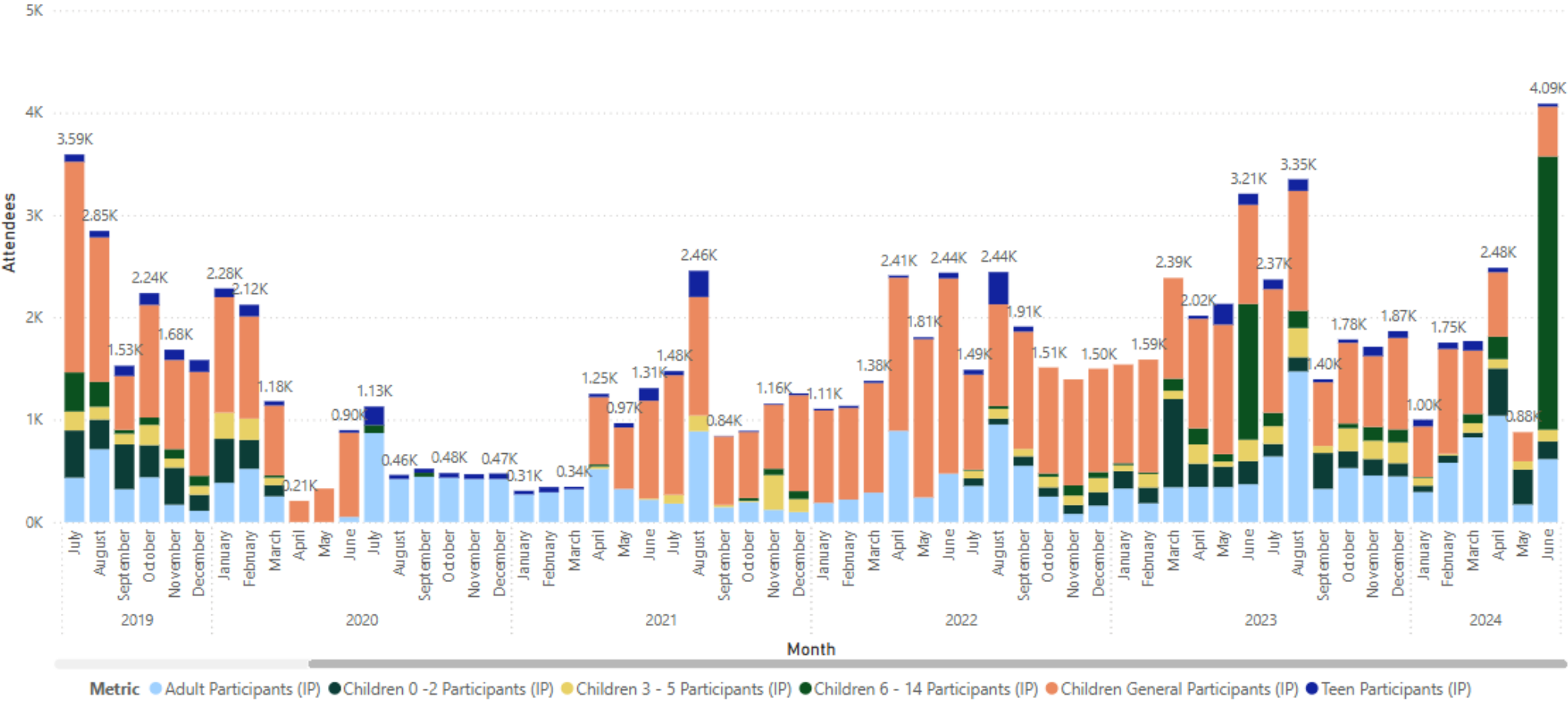
CHENEY LIBRARY MONTHLY ATTENDANCE



# Performance Measures

< Back to report

## LIBRARY PROGRAM PARTICIPATION



# FY 2025 Top Five Lending CT Public Libraries

<u>Town</u>	<u>Total Loans (includes ebooks)</u>	<u>Physical Items Loaned</u>
Greenwich	1,116,832	681,839
West Hartford	771,851	553,431
Fairfield	769,041	555,558
Stamford	654,259	473,240
Manchester	636,534	545,792

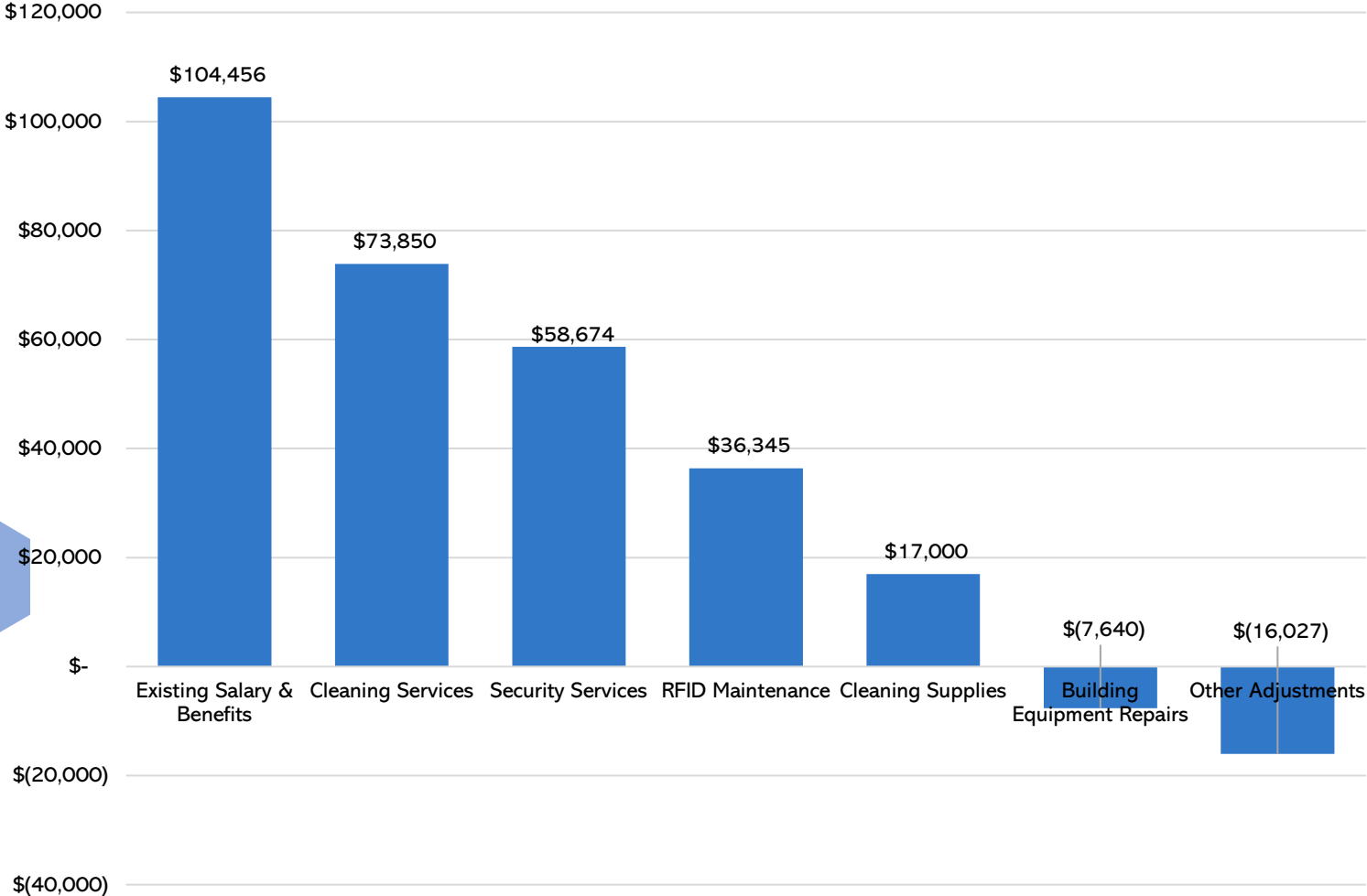
# Overview

## FY27 Library Budget Request: \$4,030,184

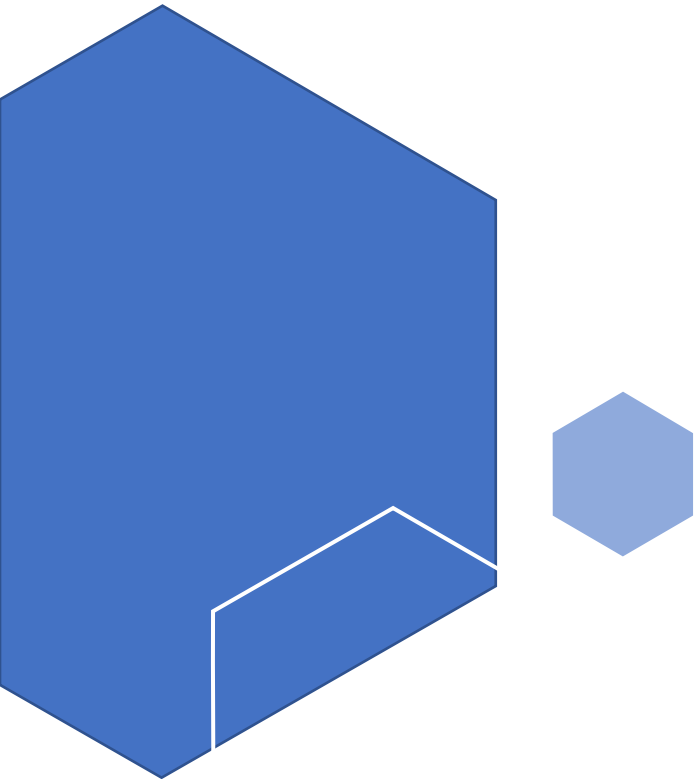


Year-to-year increase of \$266,658 (7.09%)

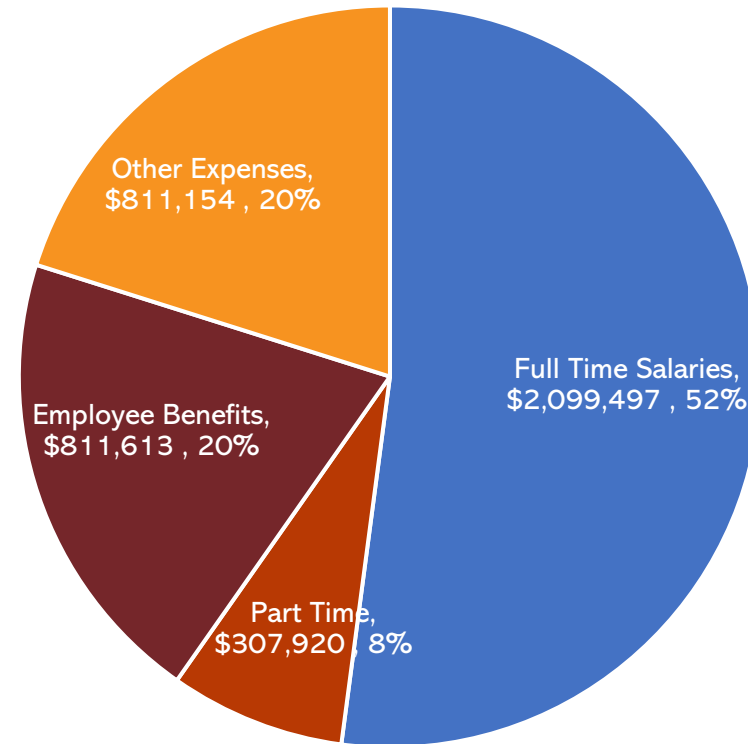
Budget Drivers- Library FY27



# Budget Summary



Personnel vs Non Personnel- Library FY27



# FY 27 Library Request

## FY 26 / Current Year, with 25 Full-timers

At the Present Main Library:

3 Customer Service Desks on one floor

21 Full-time Employees

Current Branch Library

4 Full-time Employees

## FY 27 / Requested, with 29 Full-timers

New Main Library Building:

6 Service Desks on three floors

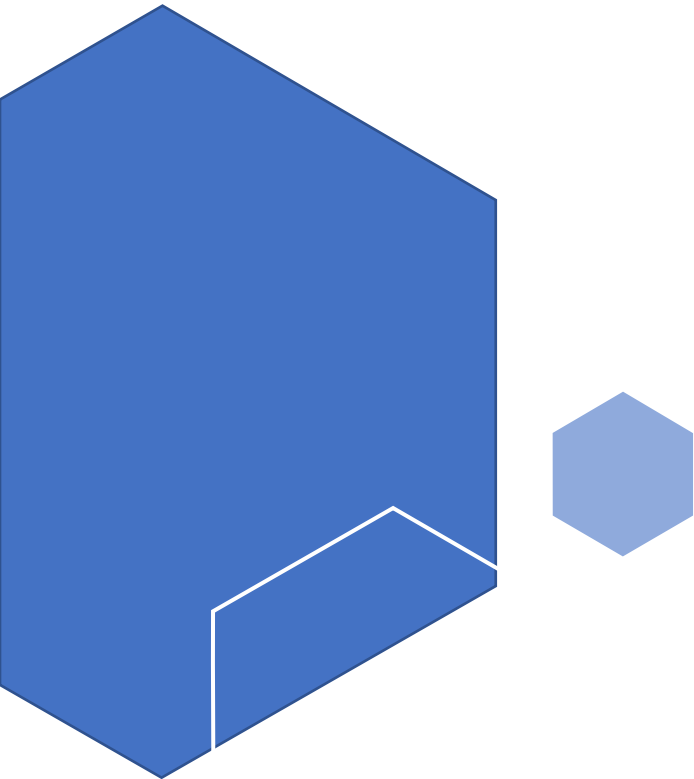
26 Full-Time Employees

Branch Library with reduced schedule

3 Full-time Employees

By shifting one Full-time from the Branch to the new Main Library, that would reduce the need for new positions to only four

# Reduction Options



**Closing Whiton Branch**

**Book purchases**

**Programming**

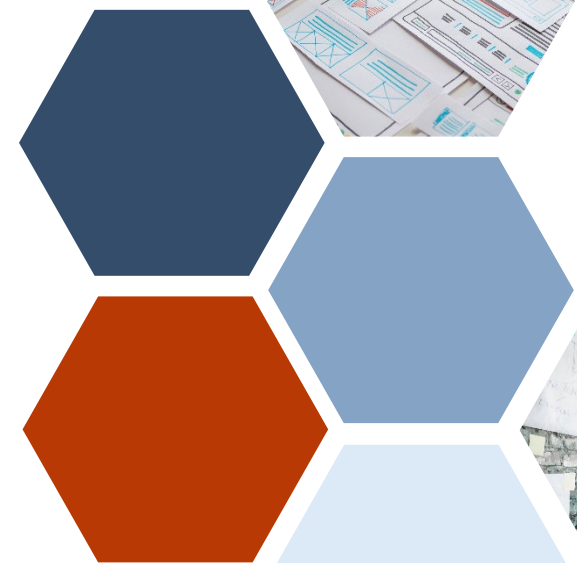
# Local Public Libraries with Branches

- West Hartford Main Library plus two branches
- East Hartford Main plus one branch
- Farmington Main plus one branch
- Bristol Main plus one branch
- New Britain Main plus one branch
- Enfield Main plus one branch
- Glastonbury Main plus one 'quasi-Association branch'
- Mansfield Main plus two branches
- Hartford Main plus six branches

Libraries in the State that loan out more items annually than Manchester all have branch buildings:  
Greenwich (Main plus 3 branches) Fairfield (Main plus 2 branches) Stamford (Main plus 5 branches)

# FY 25 Expenditures to buy books & other materials, top five loaning libraries in CT

<u>Town</u>	<u>Total Book Expenditures</u>	<u>Per capita</u>
Greenwich	\$1,440,344	\$22.30
West Hartford	\$449,148	\$7.00
Fairfield	\$687,585	\$10.53
Stamford	\$930,898	\$6.69
Manchester	\$360,815	\$6.02



**Questions?**

